

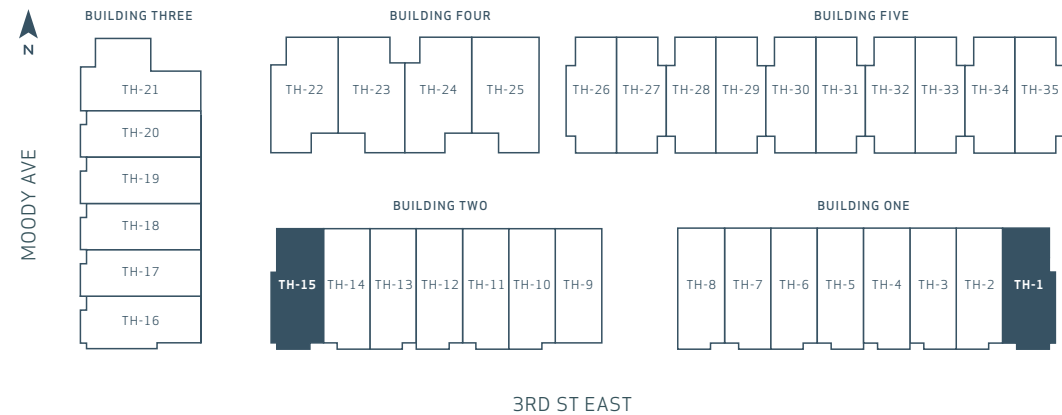
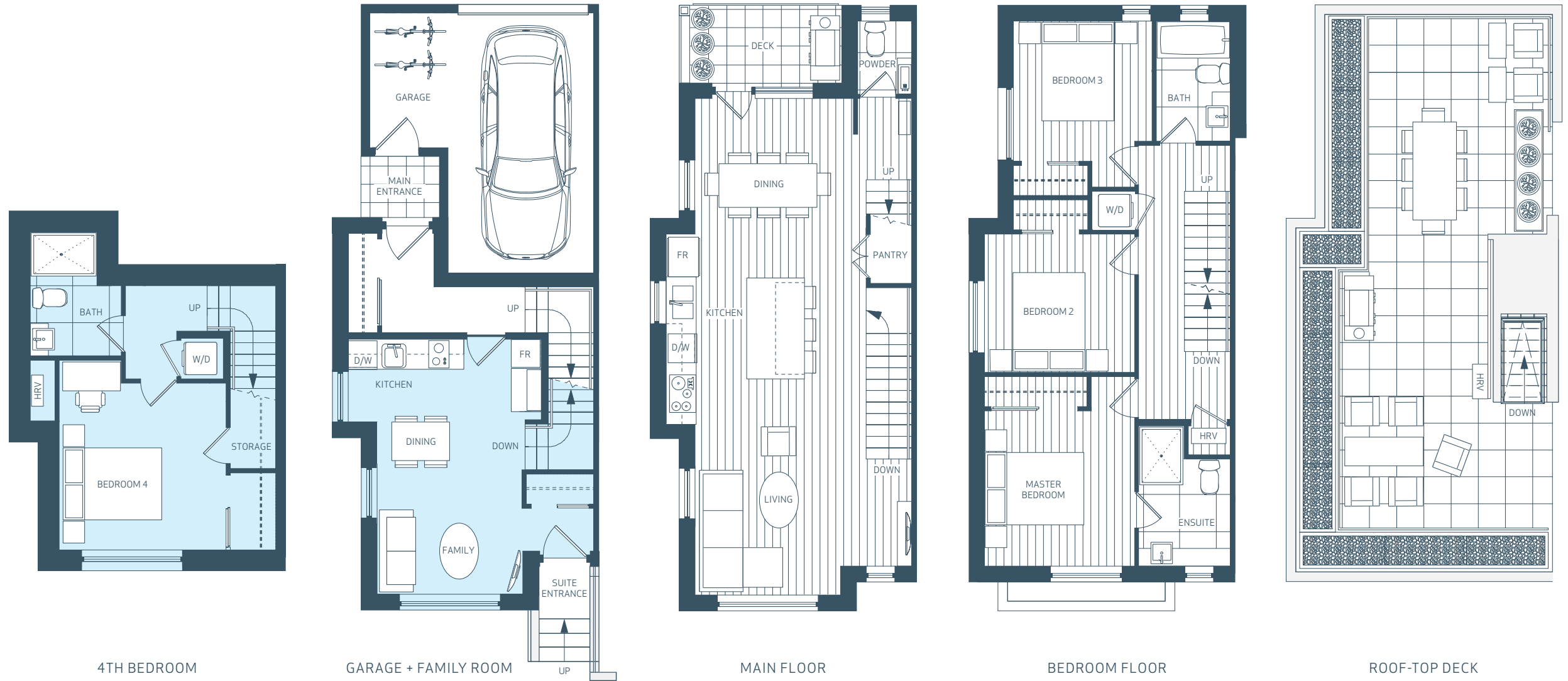
EVOLV 35

F

4 BED + FAMILY ROOM, 3.5 BATH
2,070 sq.ft.

LEGAL SUITE OPTION
652 sq.ft.

ROOF DECK
341 sq.ft.



Our largest townhome offered at Evolv35, the F Plan includes 4 bedrooms plus family room, and an expansive roof deck, where views to downtown span the horizon. An open living, dining, and kitchen space welcomes natural light from windows on three sides, including a window above the kitchen sink and large main floor deck. This family-friendly home offers 3 bedrooms on one level plus the versatility of a family room and 4th bedroom or a legal 1-bedroom suite option. Other notable features include a private garage with extra storage space, powder room on the main level, and an extra-large main entry foyer.

Developer reserves the right to make changes to the floorplans and specifications without notice. Actual homes may be a mirror image of the floorplan shown or have minor variations from the plan illustrated above. All interior square footage taken from initial survey. E.&O.E

evolvedliving.ca

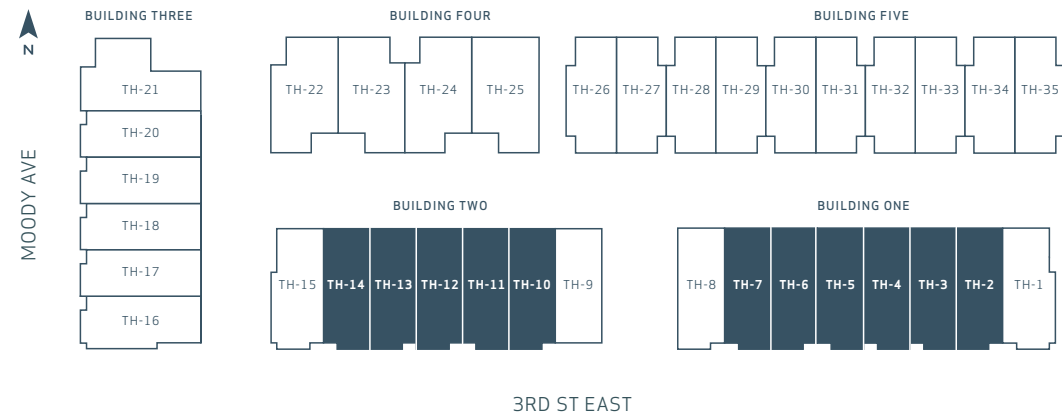
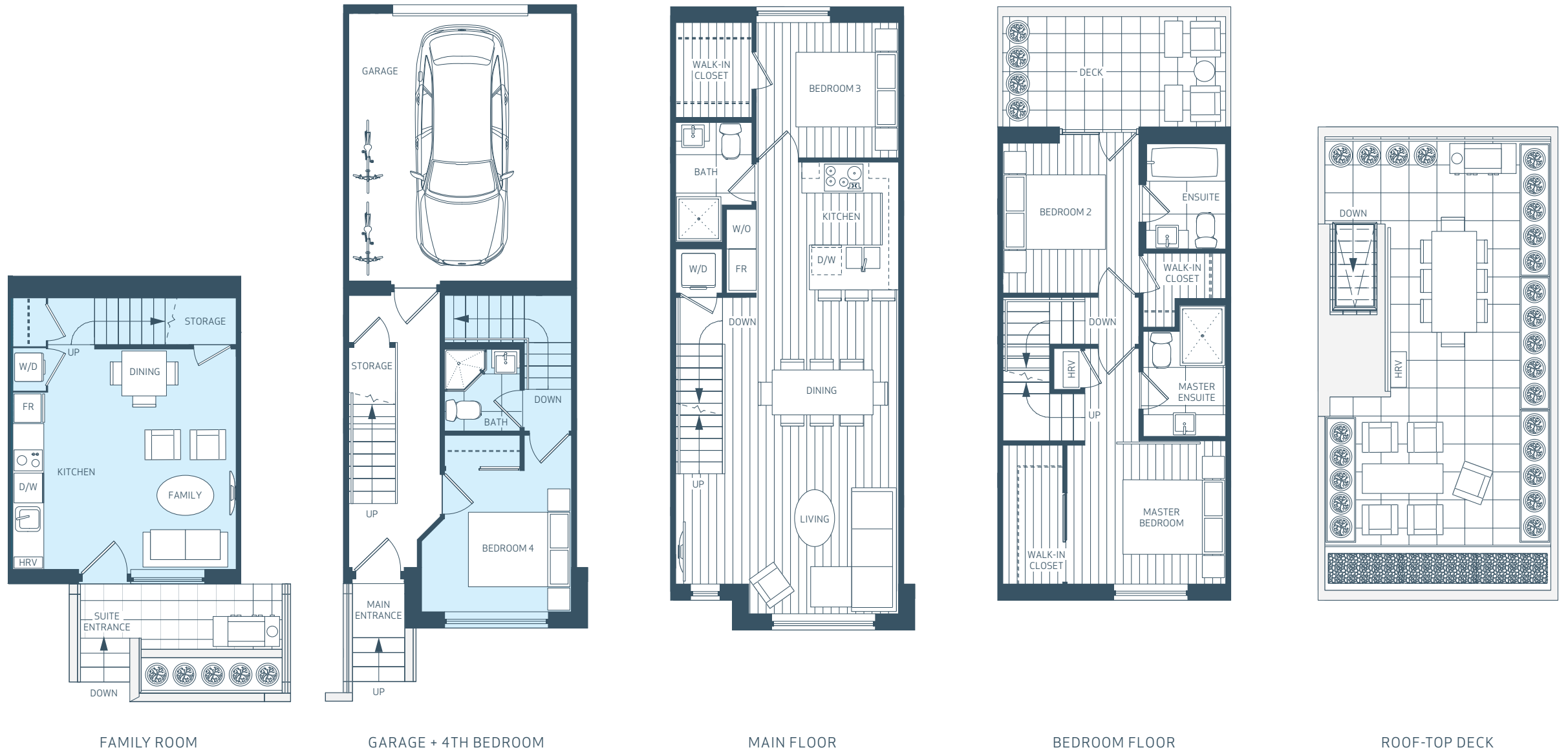
EVO LV 35

G

4 BED + FAMILY ROOM, 4 BATH
1,777 - 1779 sq.ft.

LEGAL SUITE OPTION
526 - 527 sq.ft.

ROOF DECK
359 sq.ft.



A 4-bedroom plus family room townhome that includes an expansive roof deck with views to downtown – perfect for entertaining. Bedrooms include large walk-in closets and the master and 2nd bedroom include private ensuites. A traditional u-shaped kitchen offers ample workspace and our signature floating staircase makes a modern architectural statement in your living space. Additional flexibility with the G plans is the 1-bedroom legal suite option, which can be used as a studio to give the main home a 4th bedroom or used as a larger 1-bedroom suite for your family or for added rental income.

Developer reserves the right to make changes to the floorplans and specifications without notice. Actual homes may be a mirror image of the floorplan shown or have minor variations from the plan illustrated above. All interior square footage taken from initial survey. E.&O.E

evolvedliving.ca

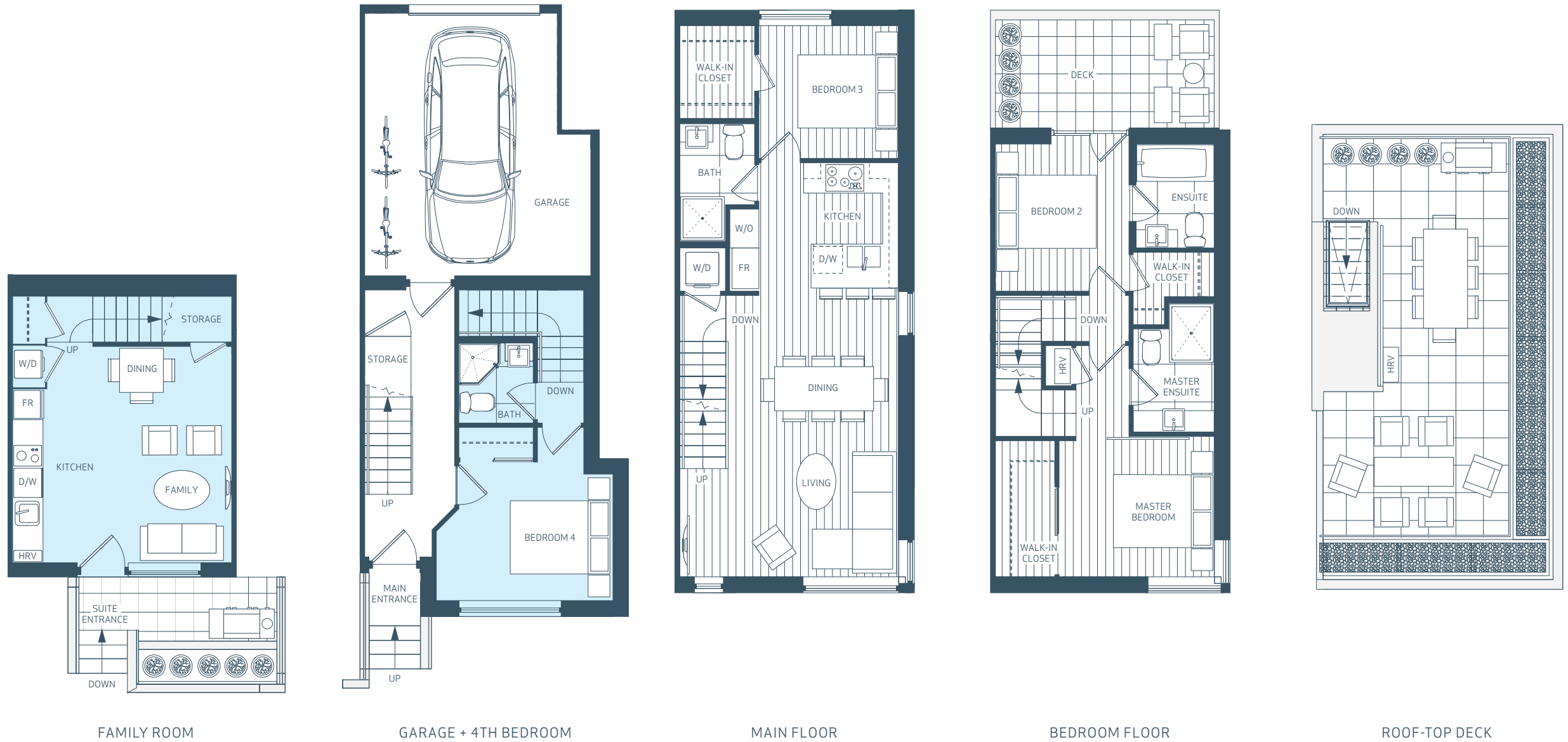
EVOLV 35

G1

4 BED + FAMILY ROOM, 4 BATH
1,821 sq.ft.

LEGAL SUITE OPTION
565 sq.ft.

ROOF DECK
290 sq.ft.



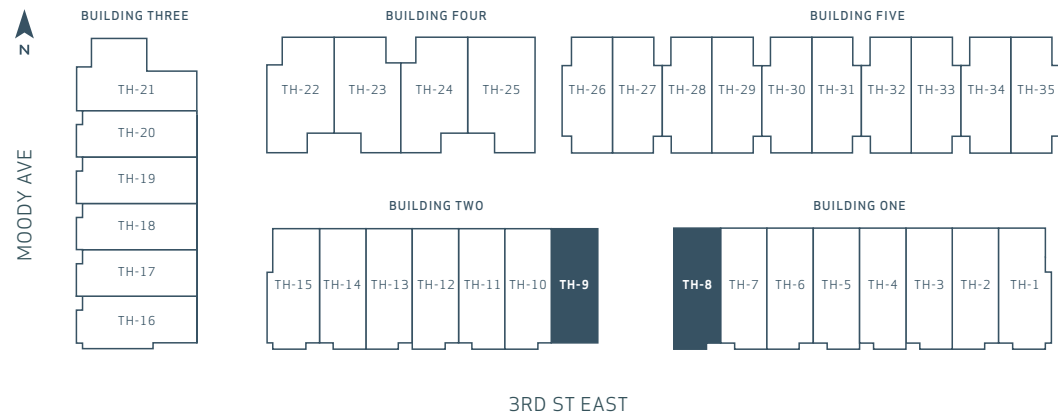
FAMILY ROOM

GARAGE + 4TH BEDROOM

MAIN FLOOR

BEDROOM FLOOR

ROOF-TOP DECK



A 4-bedroom plus family room townhome that includes an expansive roof deck with views to downtown – perfect for entertaining. Bedrooms include large walk-in closets and the master and 2nd bedroom include private ensuites. A traditional u-shaped kitchen offers ample workspace and our signature floating staircase makes a modern architectural statement in your living space. Additional flexibility with the G plans is the 1-bedroom legal suite option, which can be used as a studio to give the main home a 4th bedroom or used as a larger 1-bedroom suite for your family or for added rental income.

Developer reserves the right to make changes to the floorplans and specifications without notice. Actual homes may be a mirror image of the floorplan shown or have minor variations from the plan illustrated above. All interior square footage taken from initial survey. E.&O.E

evolvedliving.ca

EVOLV 35

H, H1

4 BED, 4 BATH
1,554 - 1,581 sq.ft.

LEGAL SUITE OPTION
278 sq.ft.

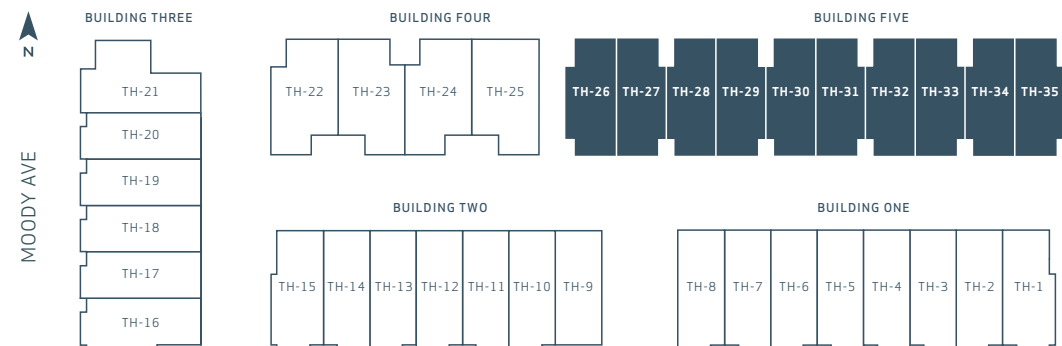


GARAGE

3RD BEDROOM +
4TH BEDROOM / STUDIO

MAIN FLOOR

BEDROOM FLOOR



This 4-bedroom laneway townhome features 2 bedrooms up, with a private master ensuite and plenty of outdoor space. The open living, dining, and kitchen space is brightened by expansive doors to a patio off both the kitchen and the living room. A traditional u-shaped kitchen offers ample workspace and our signature floating staircase makes a modern statement. The 4th bedroom can also be used as a legal studio suite option. A two-car private garage provides extra space for all your storage needs.

Developer reserves the right to make changes to the floorplans and specifications without notice. Actual homes may be a mirror image of the floorplan shown or have minor variations from the plan illustrated above. All interior square footage taken from initial survey. E.&O.E

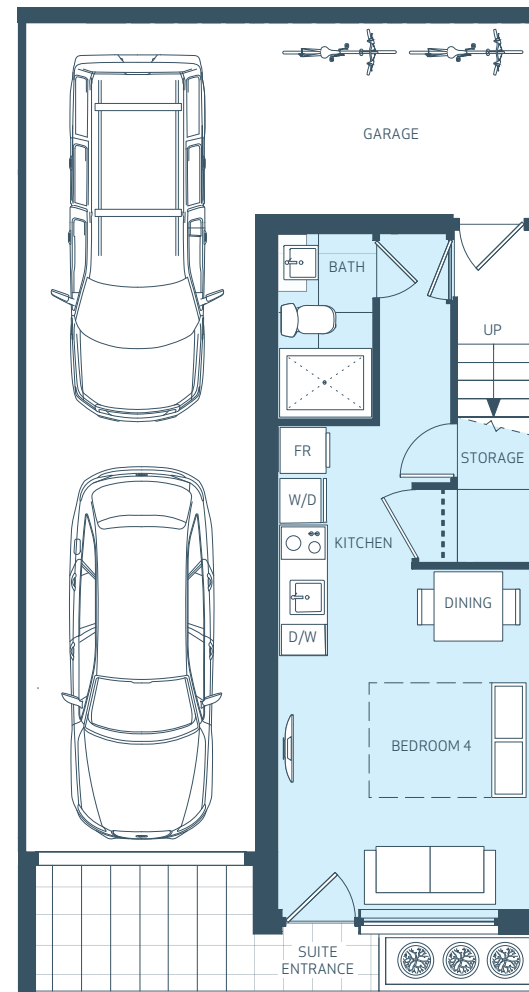
evolvedliving.ca

EVOLV 35

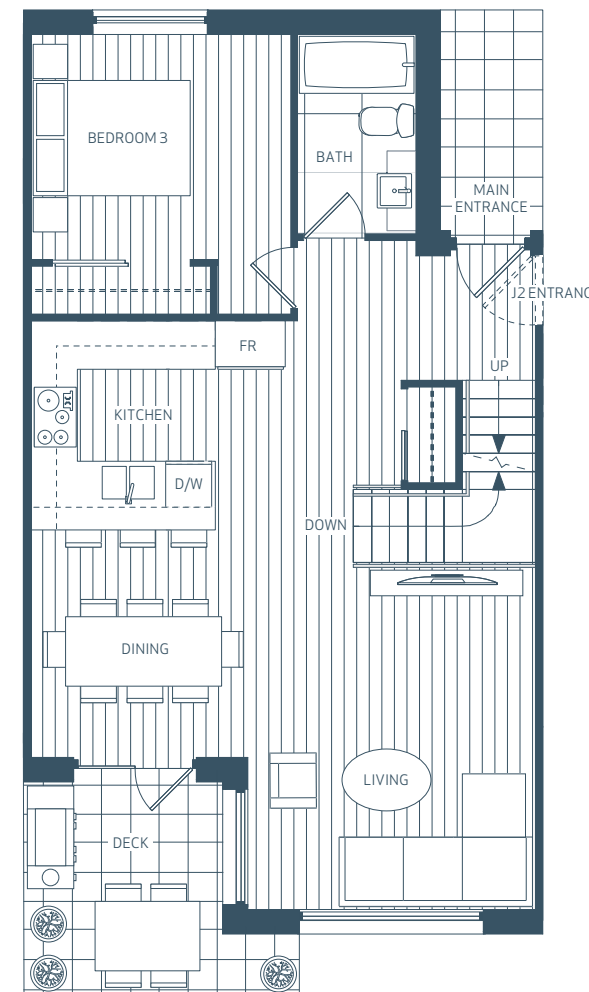
J, J1, J2

4 BED, 4 BATH
1,769 - 1,806 sq.ft.

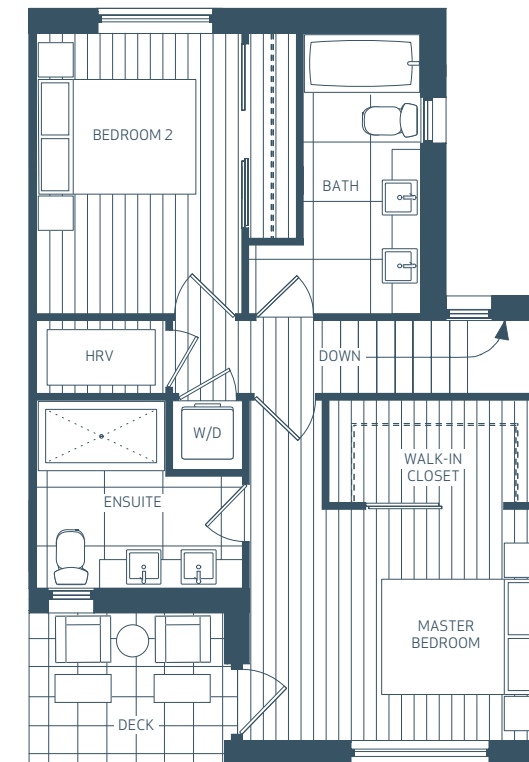
LEGAL SUITE OPTION
327-336 sq.ft.



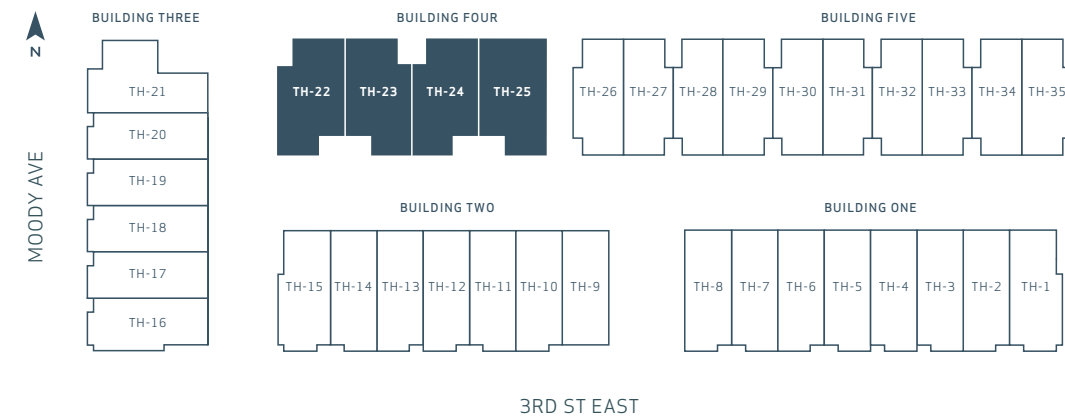
GARAGE + 4TH BEDROOM / STUDIO



MAIN FLOOR



BEDROOM FLOOR



This 4-bedroom townhome is Evolv35's widest and most spacious home. The master bedroom features a private patio and large walk-in closet. The home includes four full bathrooms, one for each bedroom. Enjoy outdoor living space on a large deck off the dining and living room, and benefit from the functional layout of a u-shaped kitchen. The 4th bedroom can also be used as a legal studio suite option. A two-car private garage provides space for all your storage needs.

Developer reserves the right to make changes to the floorplans and specifications without notice. Actual homes may be a mirror image of the floorplan shown or have minor variations from the plan illustrated above. All interior square footage taken from initial survey. E.&O.E

evolvedliving.ca



11

10

9

8

7

6

5

4

3

2

1

- 1. Family Room with full kitchenette
- 2. Private secondary entrance (perfect legal suite entry)
- 3. 1 or 2 car private garage
- 4. Fourth bedroom
- 5. Third bedroom
- 6. Expansive kitchen

- 7. Signature floating staircase
- 8. Master bedroom with private deck (some homes)
- 9. Private master ensuite
- 10. Second bedroom
- 11. Stunning roof top deck (some homes)

EVO LV 35

FIRST RELEASE



Developer reserves the right to make changes to the floorplans and specifications without notice. Actual homes may be a mirror image of the floorplan shown or have minor variations from the plan illustrated above. All interior square footage taken from initial survey. "R" indicates reverse plans. E.&O.E.

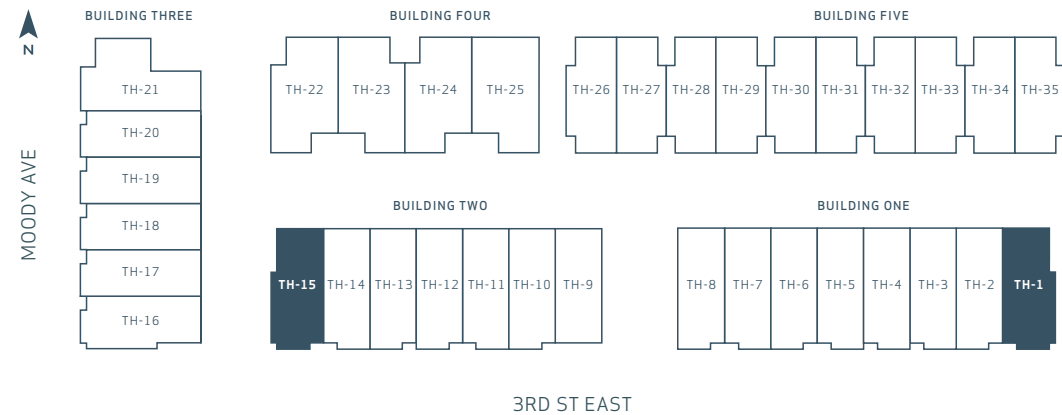
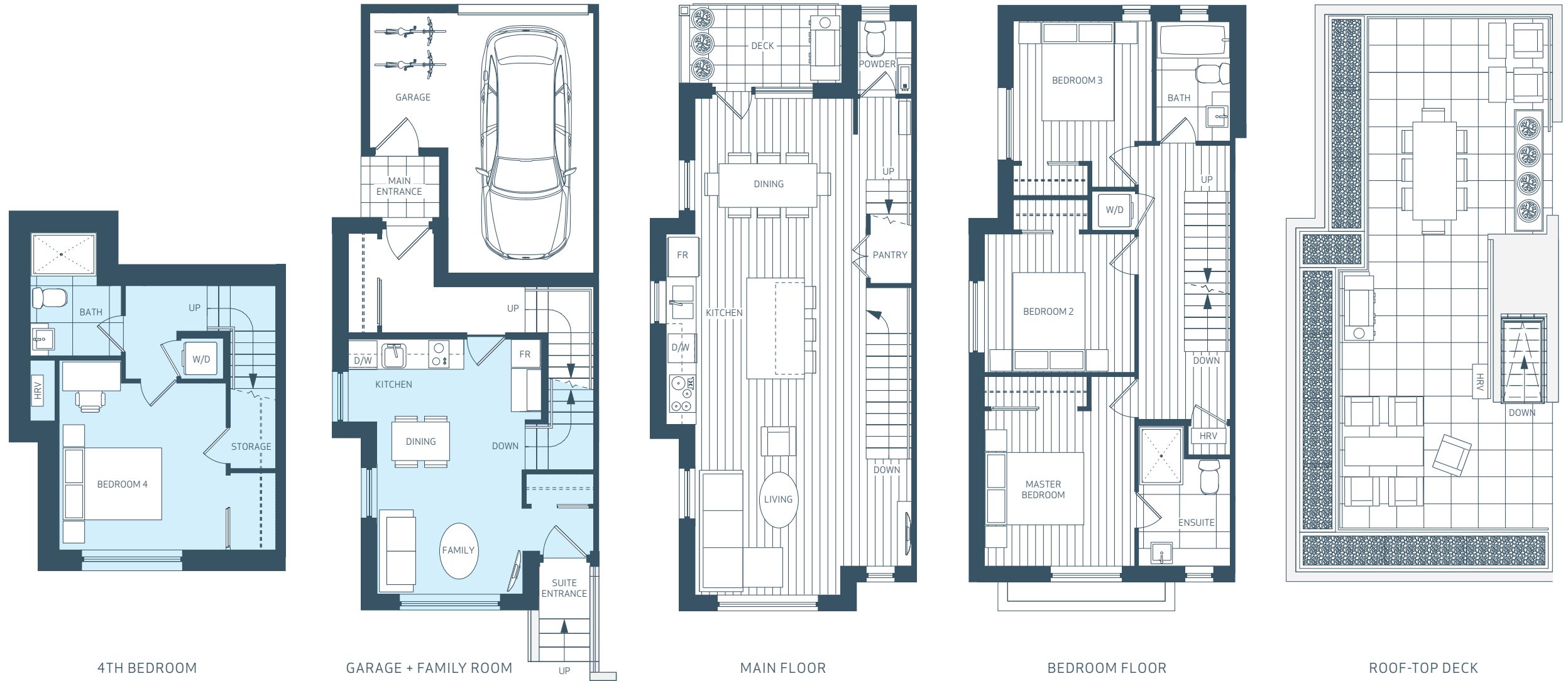
EVOLV 35

F

4 BED + FAMILY ROOM, 3.5 BATH
2,070 sq.ft.

LEGAL SUITE OPTION
652 sq.ft.

ROOF DECK
341 sq.ft.



Our largest townhome offered at Evolv35, the F Plan includes 4 bedrooms plus family room, and an expansive roof deck, where views to downtown span the horizon. An open living, dining, and kitchen space welcomes natural light from windows on three sides, including a window above the kitchen sink and large main floor deck. This family-friendly home offers 3 bedrooms on one level plus the versatility of a family room and 4th bedroom or a legal 1-bedroom suite option. Other notable features include a private garage with extra storage space, powder room on the main level, and an extra-large main entry foyer.

Developer reserves the right to make changes to the floorplans and specifications without notice. Actual homes may be a mirror image of the floorplan shown or have minor variations from the plan illustrated above. All interior square footage taken from initial survey. E.&O.E

evolvedliving.ca