

# EVELYN

by ONNI

## PLAN B AT FOREST'S-EDGE THREE & FOUR

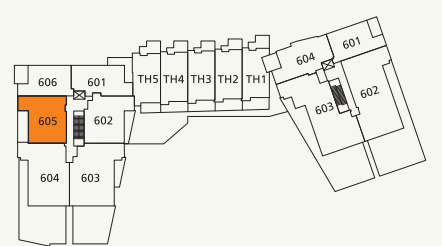
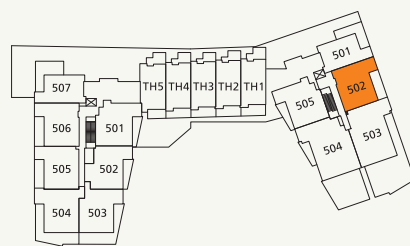
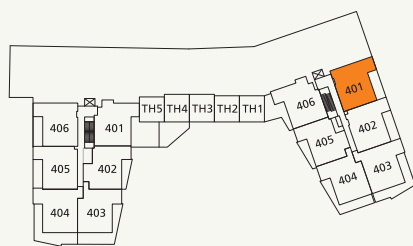
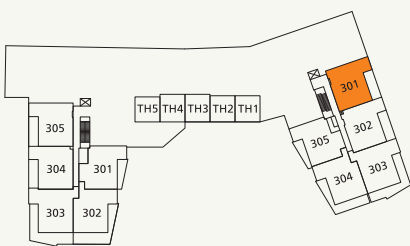
2 Bedroom + Den

1,125-1,145 SF Living (APPROX.)

170-175 SF Outdoor (APPROX.)

1,295-1,320 SF Total (APPROX.)

- 1 36" Sub-Zero Integrated Refrigerator
- 2 30" Miele Gas Cooktop + Faber Slim Line Hood Fan
- 3 30" Miele Convection Wall Oven + Panasonic Microwave
- 4 Asko Integrated Dishwasher
- 5 High-Efficiency Full Size Washer and Dryer



# EVELYN

by ONNI

## PLAN C AT FOREST'S-EDGE THREE & FOUR

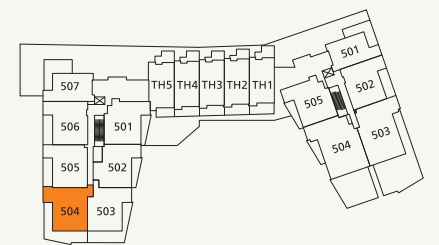
2 Bedroom + Den

1,195-1,210 SF Living (APPROX.)

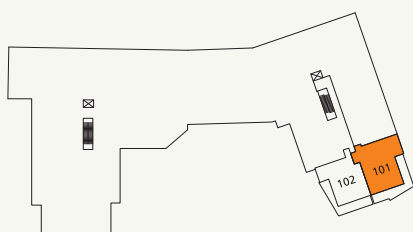
440-510 SF Outdoor (APPROX.)

1,635-1,705 SF Total (APPROX.)

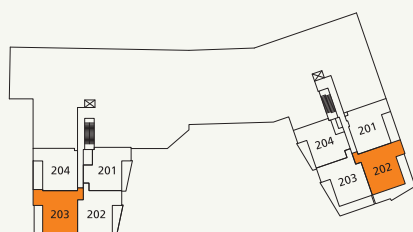
- 1 30" Sub-Zero Integrated Refrigerator
- 2 30" Miele Gas Cooktop + Faber Slim Line Hood Fan
- 3 30" Miele Convection Wall Oven + Panasonic Microwave
- 4 Asko Integrated Dishwasher
- 5 High-Efficiency Full Size Washer and Dryer



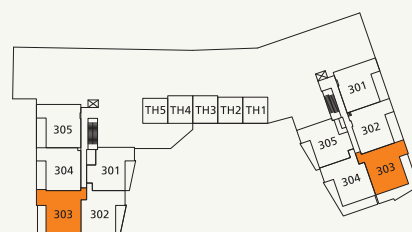
AT FOREST'S-EDGE THREE/FOUR  
5TH FLOOR



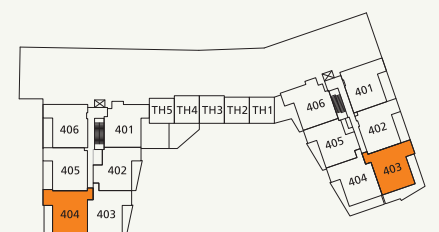
AT FOREST'S-EDGE THREE/FOUR  
1st FLOOR



AT FOREST'S-EDGE THREE/FOUR  
2nd FLOOR



AT FOREST'S-EDGE THREE/FOUR  
3rd FLOOR



AT FOREST'S-EDGE THREE/FOUR  
4th FLOOR



# EVELYN

by ONNI

## PLAN D AT FOREST'S-EDGE THREE & FOUR

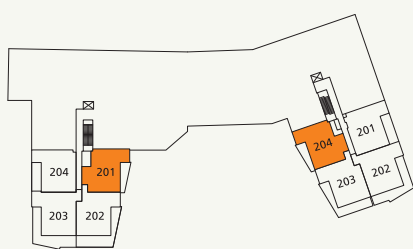
2 Bedroom

1,085-1,100 SF Living (APPROX.)

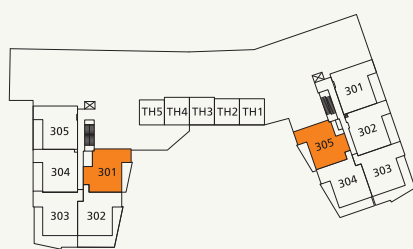
155 SF Outdoor (APPROX.)

1,240-1,255 SF Total (APPROX.)

- 1 30" Sub-Zero Integrated Refrigerator
- 2 30" Miele Gas Cooktop + Faber Slim Line Hood Fan
- 3 30" Miele Convection Wall Oven + Panasonic Microwave
- 4 Asko Integrated Dishwasher
- 5 High-Efficiency Full Size Washer
- 6 High-Efficiency Full Size Dryer



AT FOREST'S-EDGE THREE/FOUR  
2nd FLOOR



AT FOREST'S-EDGE THREE/FOUR  
3rd FLOOR



AT FOREST'S-EDGE THREE/FOUR  
4th FLOOR



AT FOREST'S-EDGE THREE/FOUR  
5th FLOOR



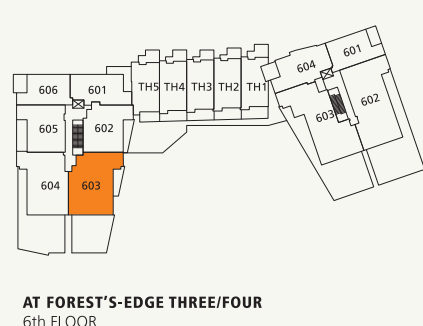
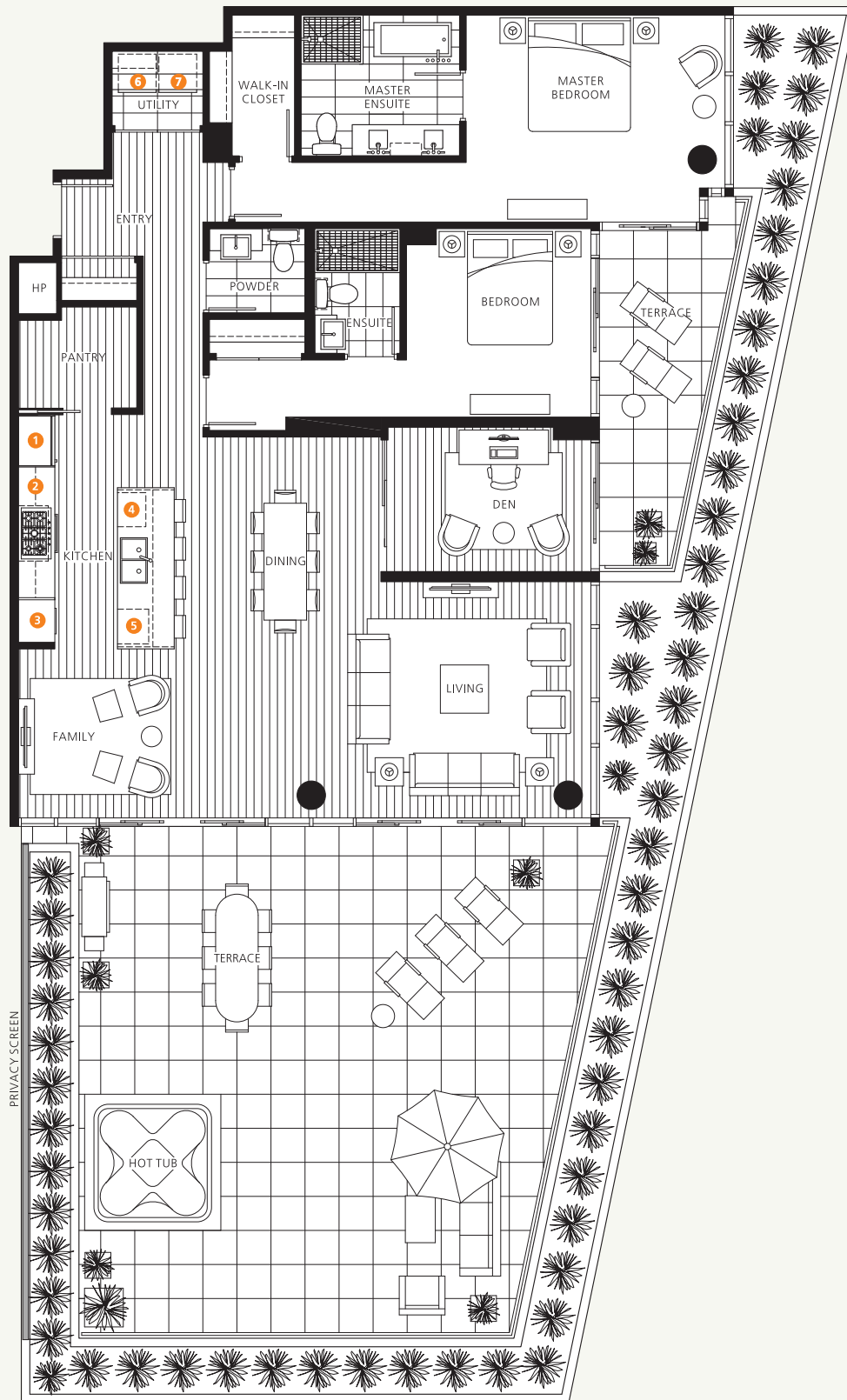
# EVELYN

by ONNI

## PLAN E AT FOREST'S-EDGE THREE & FOUR

2 Bedroom + Den + Family  
 1,670 SF Living (APPROX.)  
 955-1,010 SF Outdoor (APPROX.)  
 2,625-2,680 SF Total (APPROX.)

- 1 36" Sub-Zero Integrated Refrigerator
- 2 36" Miele Gas Cooktop + Faber Slim Line Hood Fan
- 3 30" Miele Convection Wall Oven + Panasonic Microwave
- 4 Asko Integrated Dishwasher
- 5 Sub-Zero Integrated Under-Counter Wine Fridge
- 6 High-Efficiency Full Size Washer
- 7 High-Efficiency Full Size Dryer



Dimensions, square footage and floorplans are approximate only. Final dimensions, square footage and floorplans may vary and will be determined by final strata plan measurements. Final floorplans may be a mirror image of the floorplans shown above. The Developer reserves the right to make changes to the floorplans, project design, appliances, specifications, and features. E.&O.E.

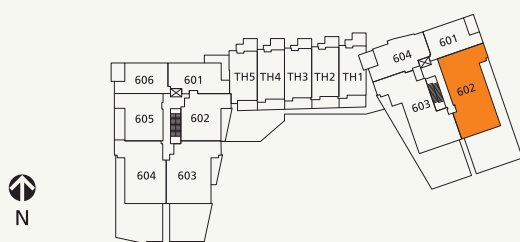
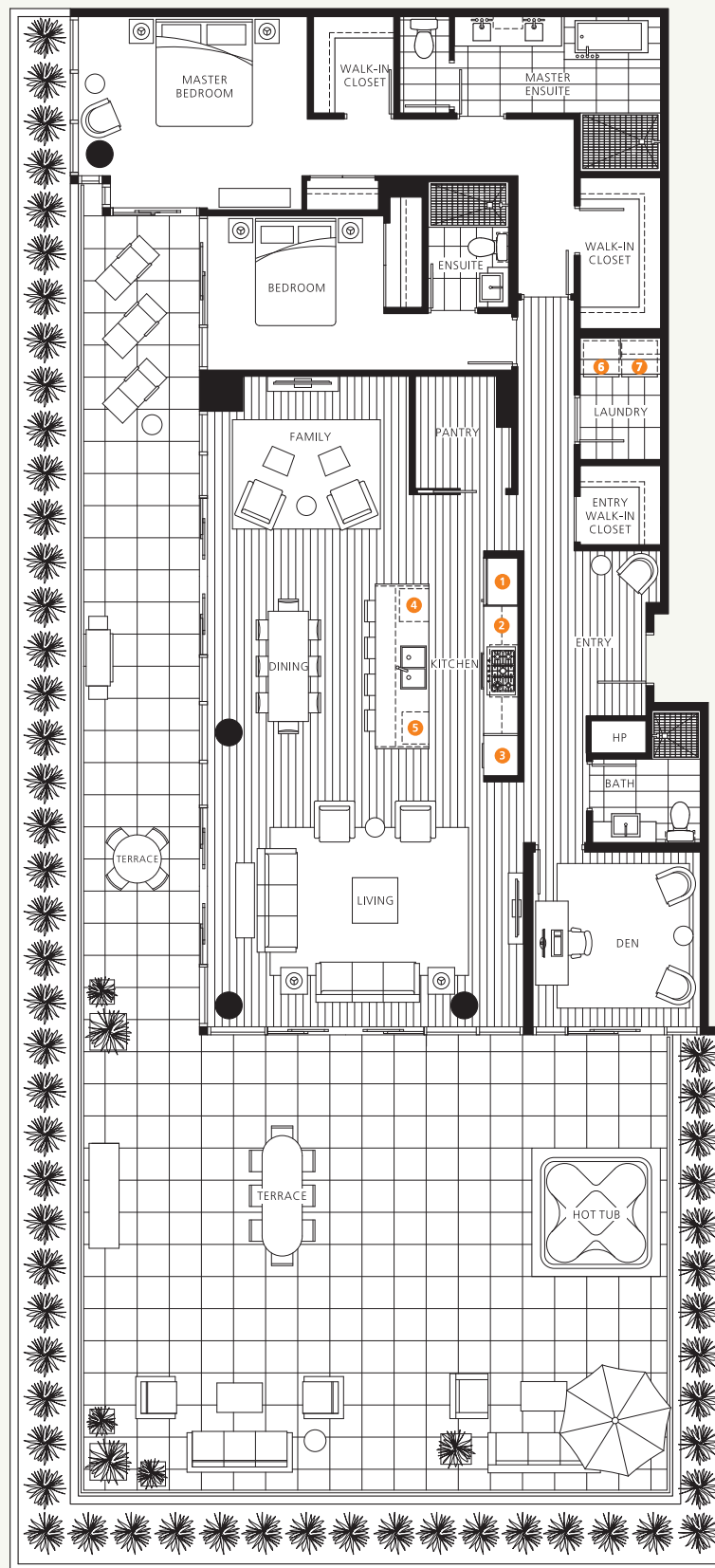
# EVELYN

by ONNI

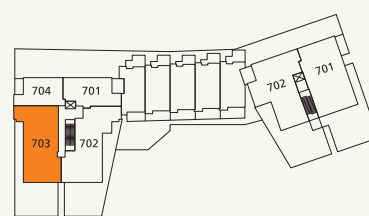
## PLAN G AT FOREST'S-EDGE THREE & FOUR

2 Bedroom + Den + Family  
 1,995 SF Living (APPROX.)  
 1,395 SF Outdoor (APPROX.)  
 3,390 SF Total (APPROX.)

- 1 36" Sub-Zero Integrated Refrigerator
- 2 36" Miele Gas Cooktop + Faber Slim Line Hood Fan
- 3 30" Miele Convection Wall Oven + Panasonic Microwave
- 4 Asko Integrated Dishwasher
- 5 Sub-Zero Integrated Under-Counter Wine Fridge
- 6 High-Efficiency Full Size Washer
- 7 High-Efficiency Full Size Dryer



AT FOREST'S-EDGE THREE/FOUR  
6th FLOOR



AT FOREST'S-EDGE THREE/FOUR  
7th FLOOR

# EVELYN

by ONNI

## PLAN TH AT FOREST'S-EDGE THREE & FOUR

2 Bedroom + Den

1,730-1,765 SF Living (APPROX.)

250-320 SF Outdoor (APPROX.)

1,990-2,085 SF Total (APPROX.)

- 1 36" Sub-Zero Integrated Refrigerator
- 2 36" Miele Gas Cooktop + Faber Slim Line Hood Fan
- 3 30" Miele Convection Wall Oven + Panasonic Microwave
- 4 Asko Integrated Dishwasher
- 5 Sub-zero Integrated Under-Counter Wine Fridge
- 6 High-Efficiency Full Size Washer and Dryer



MAIN FLOOR

2ND FLOOR

AT FOREST'S-EDGE THREE/FOUR  
TOWNHOMES