

A modern living and dining area. On the left, a white fireplace with a black glass insert sits on a light-colored tiled hearth. Above the mantel is a round mirror, a small gold lamp, and a framed poster of Amy Winehouse. To the right of the fireplace is a wine rack. In the center, a dining table with a black tablecloth and black chairs is set with white dishes and glasses. A pendant light hangs above the table. In the background, a bright orange wall features a framed abstract painting. Above the orange wall, a large wooden world map is mounted. A large window on the left shows a view of trees and a house. A grey sofa with blue and white patterned pillows is in the foreground. A vase of yellow flowers sits on a wooden table in the lower right.

ROSSETTI

303 131 WEST 20TH STREET

CENTRAL LONSDALE, NORTH VANCOUVER

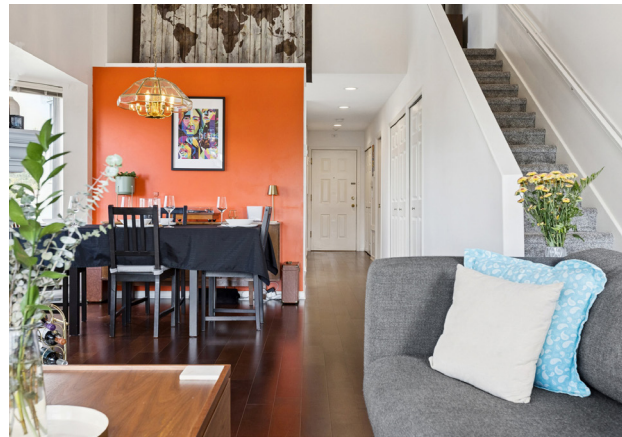


LOFT LIVING IN CENTRAL LONSDALE

2 Beds | 1.5 Baths | 1,054 Sq/Ft

■ Rarely available penthouse home at 'Vista West'. This top-floor, two-level home features unique loft-style architecture in a quiet, boutique building in Central Lonsdale. Offering 2 bedrooms and 1.5 bathrooms across 1,054 square feet, the layout is bright, functional, and full of character.

The large main level offers soaring vaulted ceilings, southwest corner exposure, and a thoughtful blend of open-concept flow with defined spaces. Bay windows span the entire outer wall flooding the home with natural light, while the rich hardwood flooring and natural gas fireplace add warmth and character. A south-facing balcony off of the living room is ideal for BBQs or quiet afternoon sun. Updated in 2021, the bright kitchen features quartz countertops, stainless steel appliances, and views of the North Shore mountains. A well separated second bedroom makes a perfect kids room, guest room or home office, with a powder room nearby and lots of in-suite storage throughout including a mud-room closet, laundry and pantry closet with custom built-ins, plus under-stair storage. The upper loft level features a spacious and updated primary bedroom with plush new carpet, new paint and serene views looking out to the North Shore mountains and Lion's Gate Bridge. Also upstairs, you will find a full ensuite bathroom and access to a private rooftop deck with sweeping sunset and mountain views. One extra-large parking space and one full-height storage locker are included.



Well-run and self-managed building with just 12 units, built by local and reputable Brody Developments. Pets are welcome up to 20 lbs. This Central Lonsdale location offers exceptional walkability; parks, cafés, restaurants, shops, and transit are all at your doorstep, with the future Harry Jerome Rec Centre just down the street. Quick access to Highway 1 makes getting around the North Shore or heading downtown simple; a thoughtfully designed and unique home in one of North Vancouver's most connected and livable communities.



