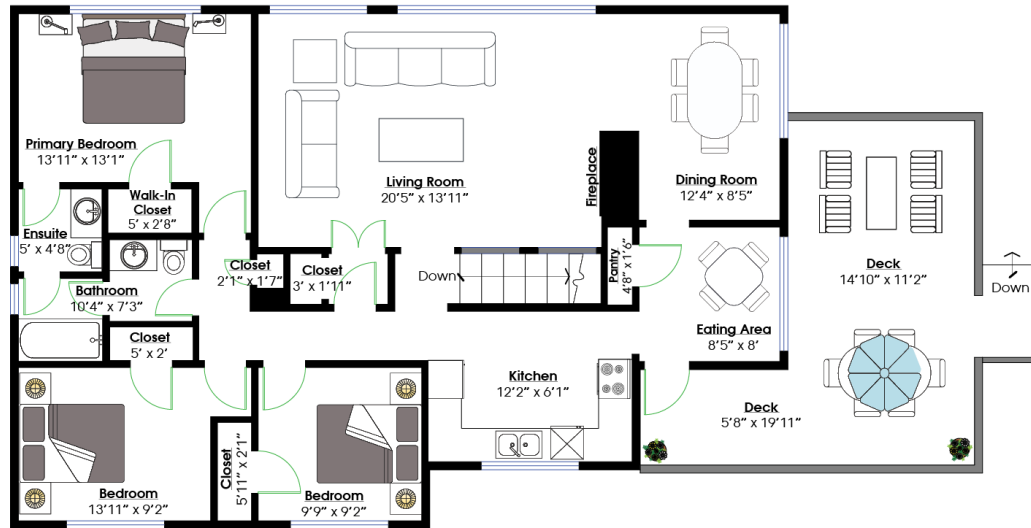
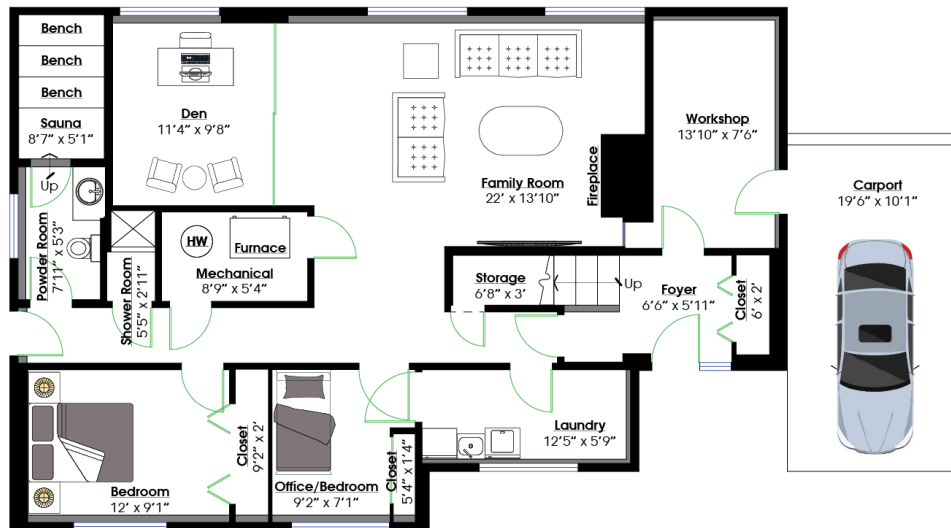


2830 CRESTLYNN PLACE

Westlynn, North Vancouver



MAIN LEVEL
 Floor Area: 1,318 Sq. Ft.
 Ceiling Height: 7'11"



LOWER LEVEL
 Floor Area: 1,318 Sq. Ft.
 Ceiling Height: 7'3"

SQ/FT TOTALS **

Main Level: 1,318 sq/ft

Lower Level: 1,318 sq/ft

TOTAL: 2,636 sq/ft

Carport: 326 sq/ft

Pool Area: 980 sq/ft

Patio: 218 sq/ft



Layout by BC Floorplans. ** While all reasonable attempts have been made to ensure accuracy and the square footage and room dimensions are believed to be correct to ANSI Standards, due to the possibility of human error the information cannot be guaranteed. E60 Insured for \$1,000,000. Information should not be relied upon without independent verification.