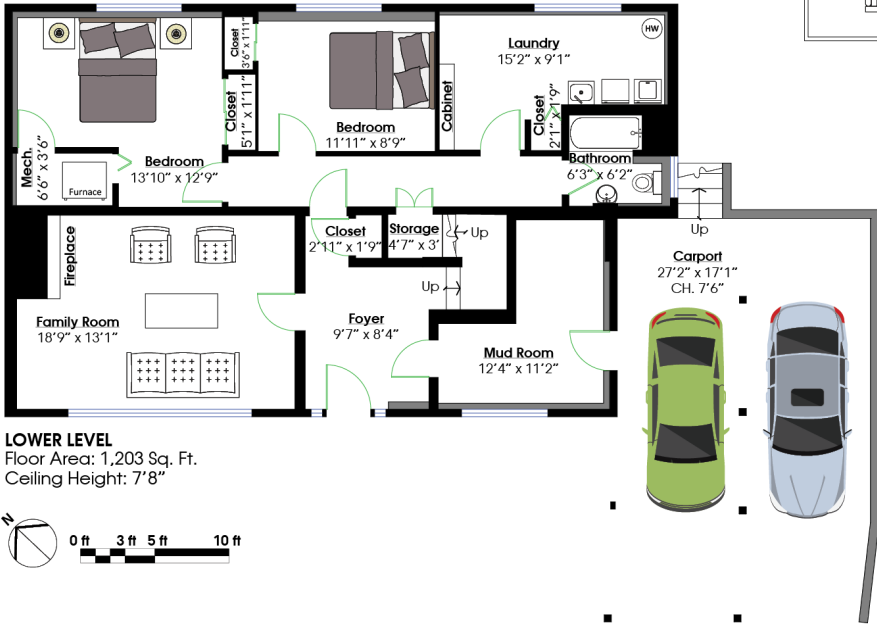
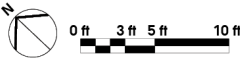


MAIN LEVEL
Floor Area: 1,378 Sq. Ft.
Ceiling Height: 8'



LOWER LEVEL
Floor Area: 1,203 Sq. Ft.
Ceiling Height: 7'8"



SQ/FT TOTALS **

Main Level:	1,378 sq/ft
Lower Level:	1,203 sq/ft
TOTAL:	2,581 sq/ft
Carport:	491 sq/ft
Deck:	347 sq/ft

Layout by BC Floorplans. ** While all reasonable attempts have been made to ensure accuracy and the square footage and room dimensions are believed to be correct to ANSI Standards, due to the possibility of human error the information cannot be guaranteed. ESO Insured for \$1,000,000. Information should not be relied upon without independent verification.