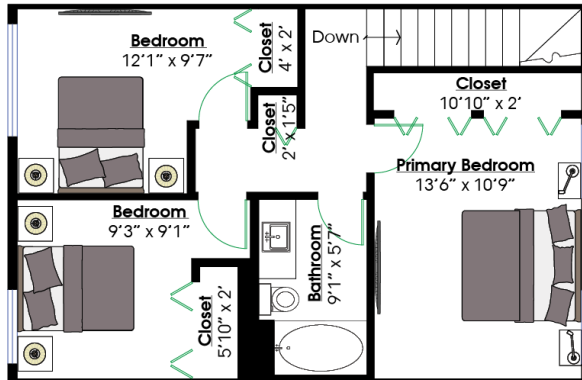


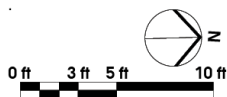
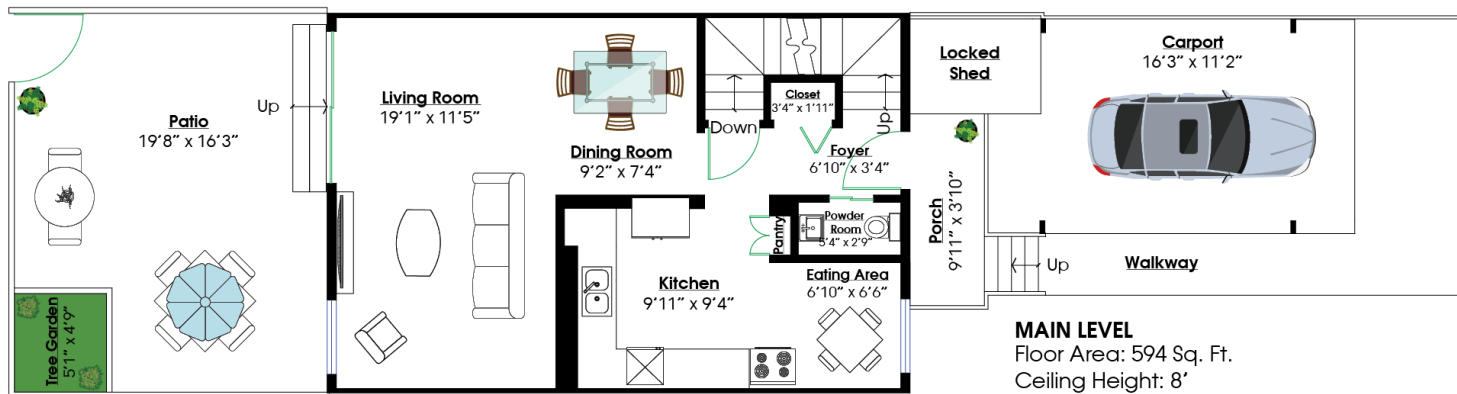
## 2060 DEEP COVE CRESCENT

Deep Cove, North Vancouver



### SQ/FT TOTALS \*\*

Main Level:	594 sq/ft	Patio:	295 sq/ft
Upper Level:	593 sq/ft	Carport:	181 sq/ft
Lower Level:	543 sq/ft		
Lower U/F:	47 sq/ft		
<b>TOTAL:</b>	<b>1,777 sq/ft</b>		



Layout by BC Floorplans. \*\* While all reasonable attempts have been made to ensure accuracy and the square footage and room dimensions are believed to be correct to ANSI Standards, due to the possibility of human error the information cannot be guaranteed. E60 Insured for \$1,000,000. Information should not be relied upon without independent verification.

