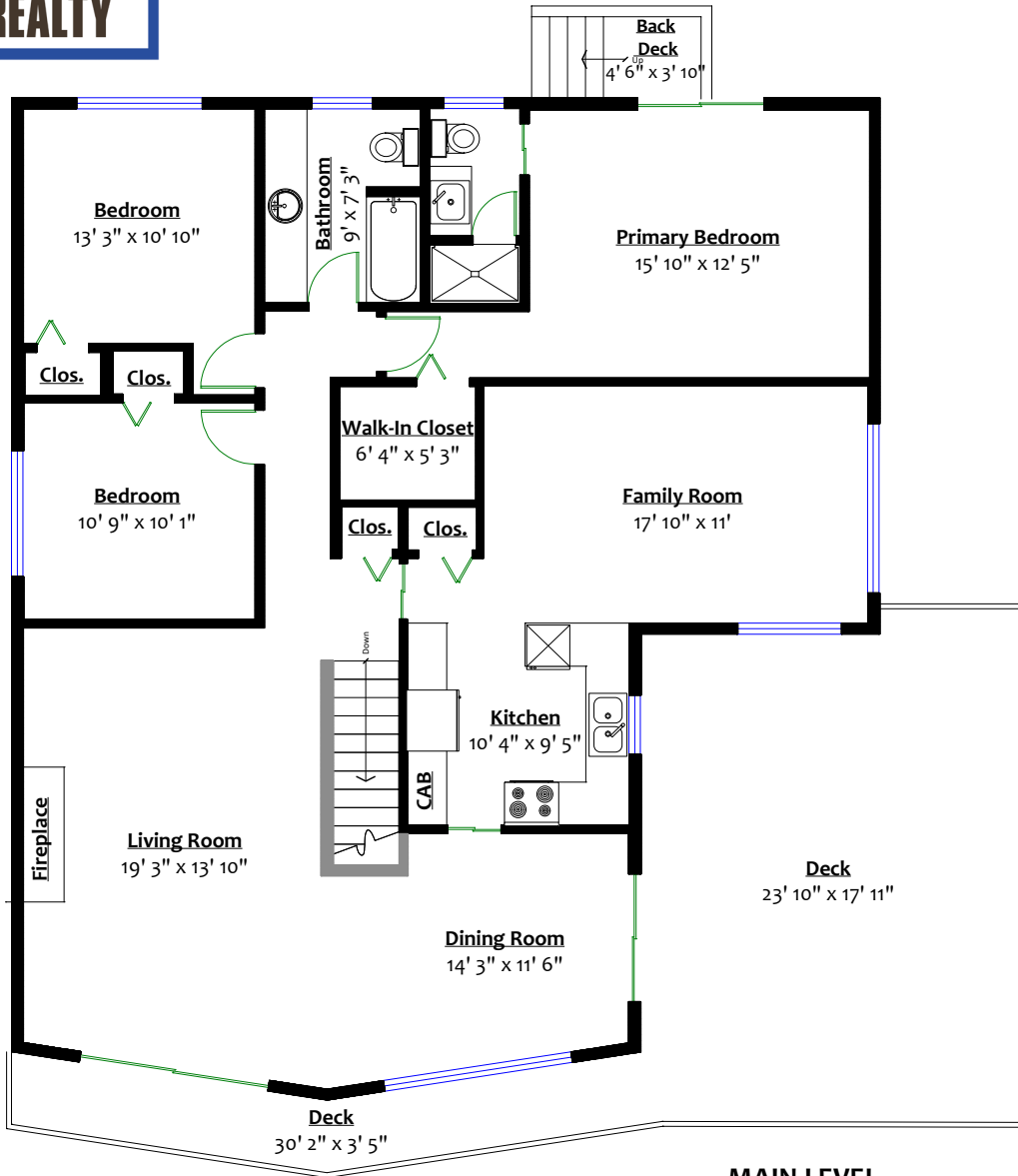




566 E BRAEMAR ROAD

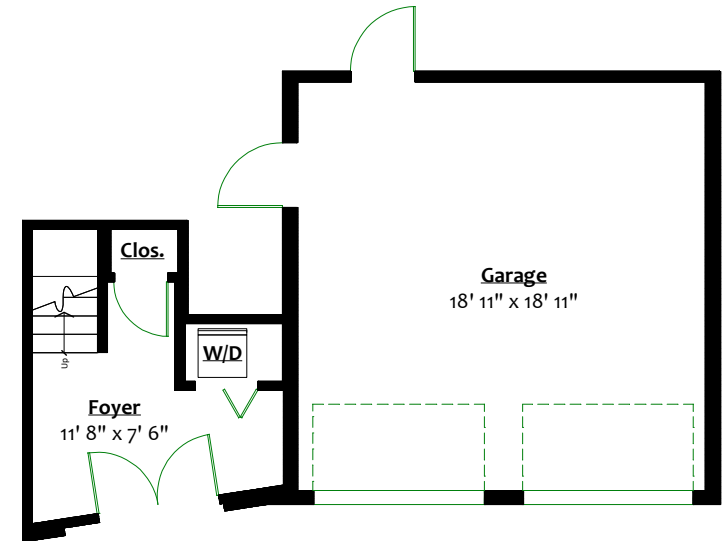
Braemar, North Vancouver



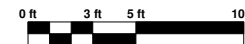
MAIN LEVEL
 Floor Area: 1,598 Sq. Ft.
 Ceiling Height: 8'

SQ/FT TOTALS

Main Level:	1,598 sq/ft	Garage:	401sq/ft
Lower Level:	155 sq/ft	Deck:	529 sq/ft
Suite:	1,393 sq/ft		
TOTAL:	3,146 sq/ft		



UPPER LEVEL
 Floor Area: 155 Sq. Ft.
 Ceiling Height: 8'



Main floor layout by BC Floorplans. E&O Insured for \$1,000,000
 While all reasonable attempts have been made to ensure accuracy and the square footage and room dimensions are believed to be correct to ANSI Standards, due to the possibility of human error the information cannot be guaranteed. Information should not be relied upon without independent verification.
 This communication is not intended to cause or induce breach of an existing agency agreement.



566 E BRAEMAR ROAD

Braemar, North Vancouver

