



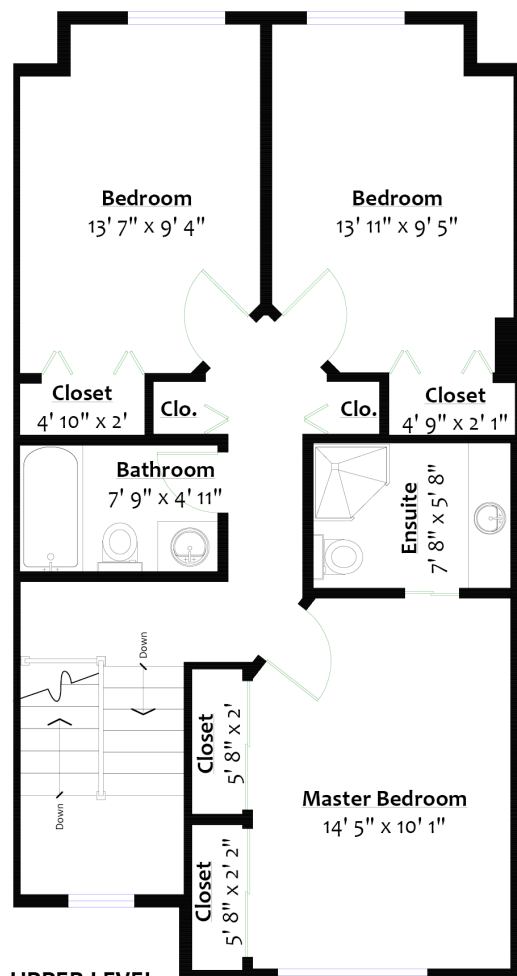
For more information
Call **604 983 2518** or visit
RealEstateNorthShore.com

5-229 EAST 8TH STREET

Central Lonsdale, North Vancouver

SQ/FT TOTALS

Main Level: 677 sq/ft
Upper Level: 719 sq/ft
Lower Level: 417 sq/ft
TOTAL 1,813 sq/ft



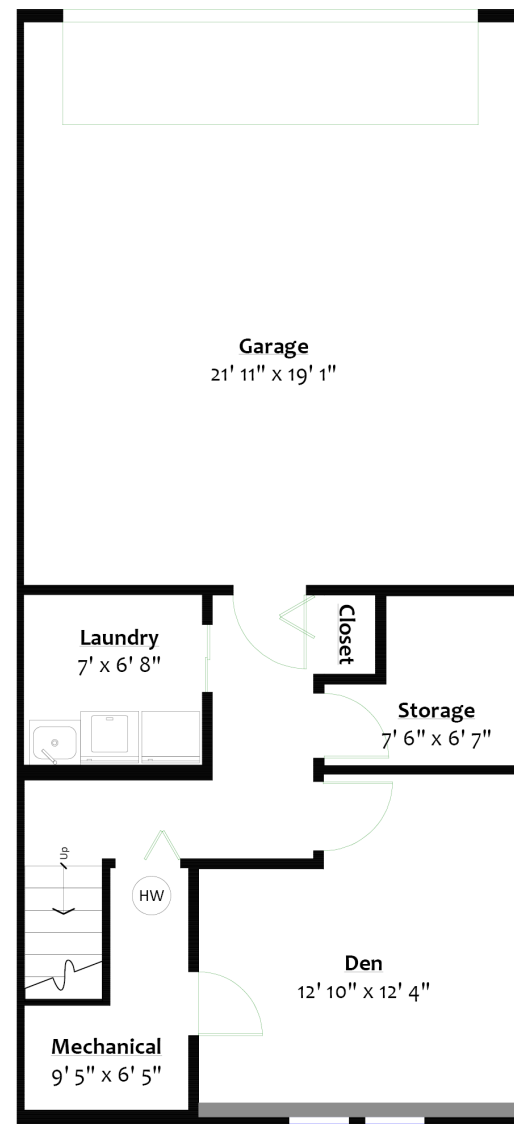
UPPER LEVEL

Floor Area: 719 Sq. Ft.
Ceiling Height: 8'



MAIN LEVEL

Floor Area: 677 Sq. Ft.
Ceiling Height: 8'



LOWER LEVEL

Floor Area: 417 Sq. Ft.



Sq/ft & room measurements are approx. based on interior measurements to exterior walls by BC Floorplans.
Information should not be relied upon without independent verification.
This communication is not intended to cause or induce breach of an existing agency agreement.