



For more information  
 Call **604 983 2518** or visit  
[RealEstateNorthShore.com](http://RealEstateNorthShore.com)

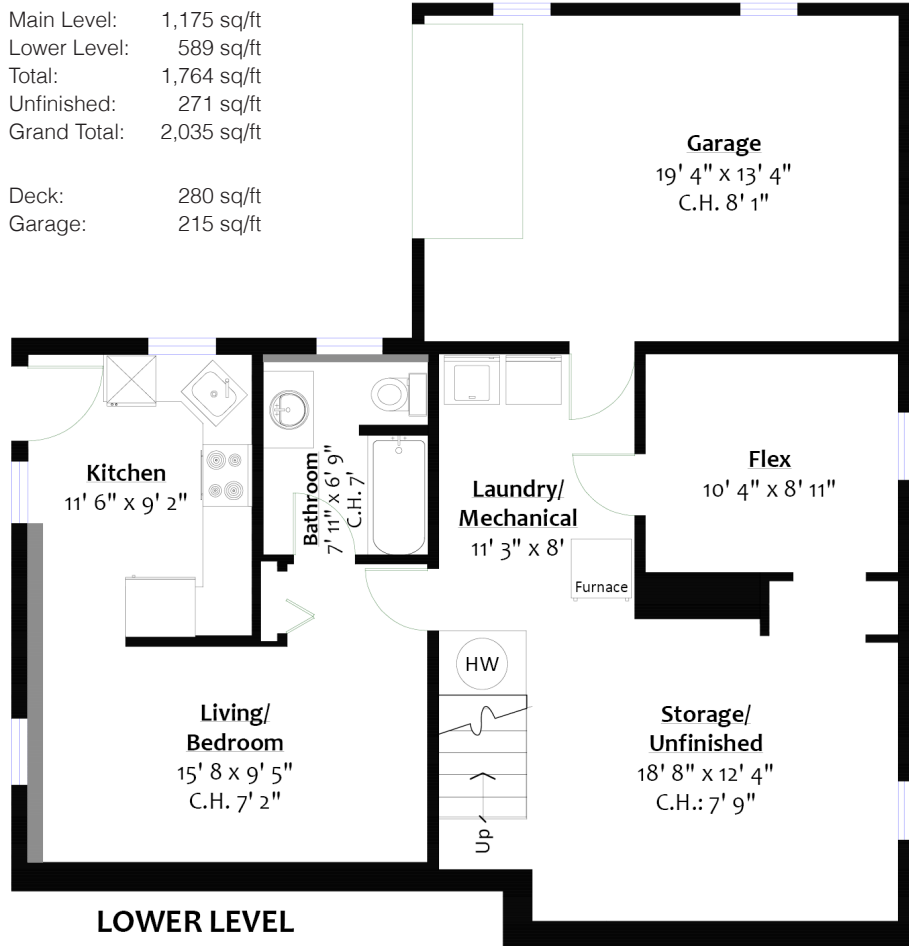
# 441 TEMPE CRESCENT

Upper Lonsdale, North Vancouver

### SQ/FT TOTALS

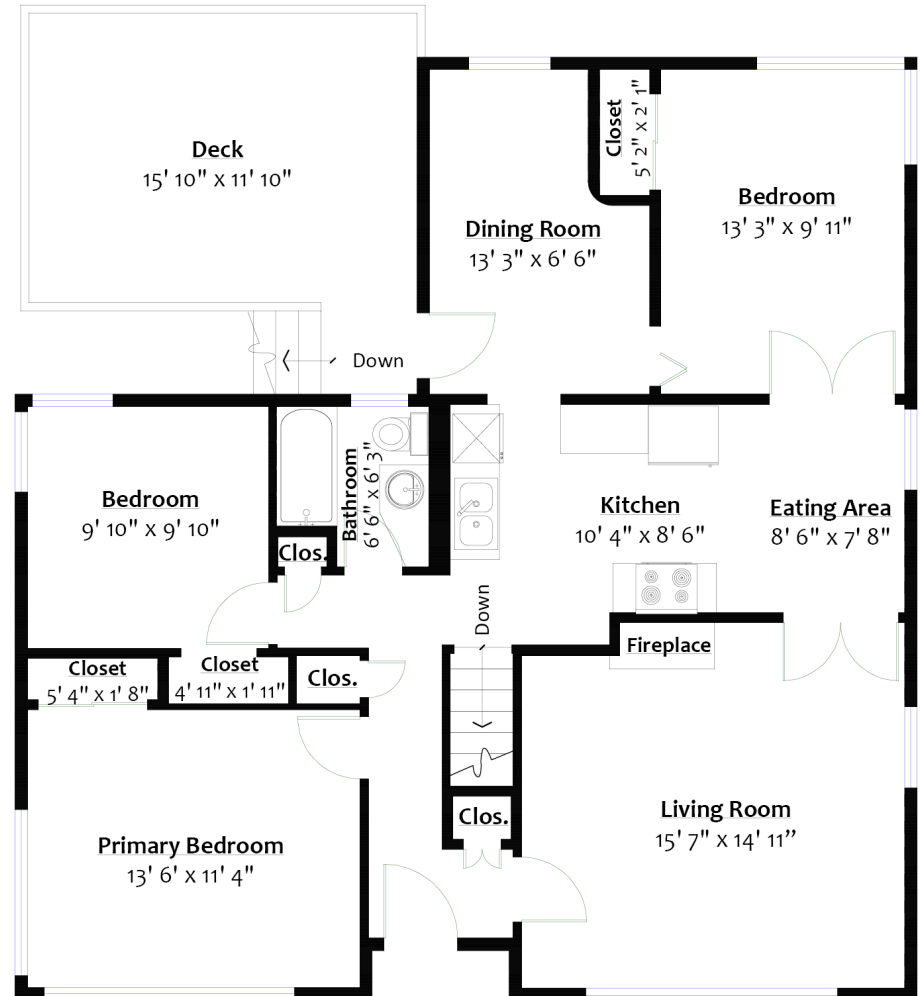
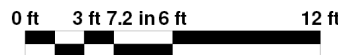
Main Level: 1,175 sq/ft  
 Lower Level: 589 sq/ft  
 Total: 1,764 sq/ft  
 Unfinished: 271 sq/ft  
 Grand Total: 2,035 sq/ft

Deck: 280 sq/ft  
 Garage: 215 sq/ft



### LOWER LEVEL

Floor Area: 589 Sq. Ft.  
 Ceiling Height: 7' 2"



### MAIN LEVEL

Floor Area: 1,175 Sq. Ft.  
 Ceiling Height: 8'

Layout by BC Floorplans. E&O Insured for \$1,000,000.  
 While all reasonable attempts have been made to ensure accuracy and the square footage and room dimensions are believed to be correct to ANSI Standards, due to the possibility of human error the information cannot be guaranteed. Information should not be relied upon without independent verification.  
 This communication is not intended to cause or induce breach of an existing agency agreement.