



For more information
 Call 604 983 2518 or visit
RealEstateNorthShore.com

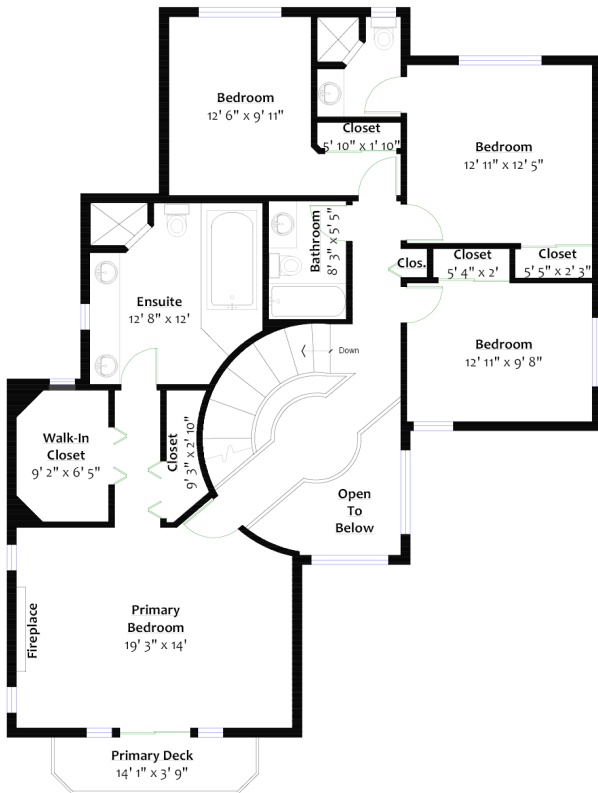
4100 NORWOOD AVENUE

Upper Lonsdale, North Vancouver

SQ/FT TOTALS

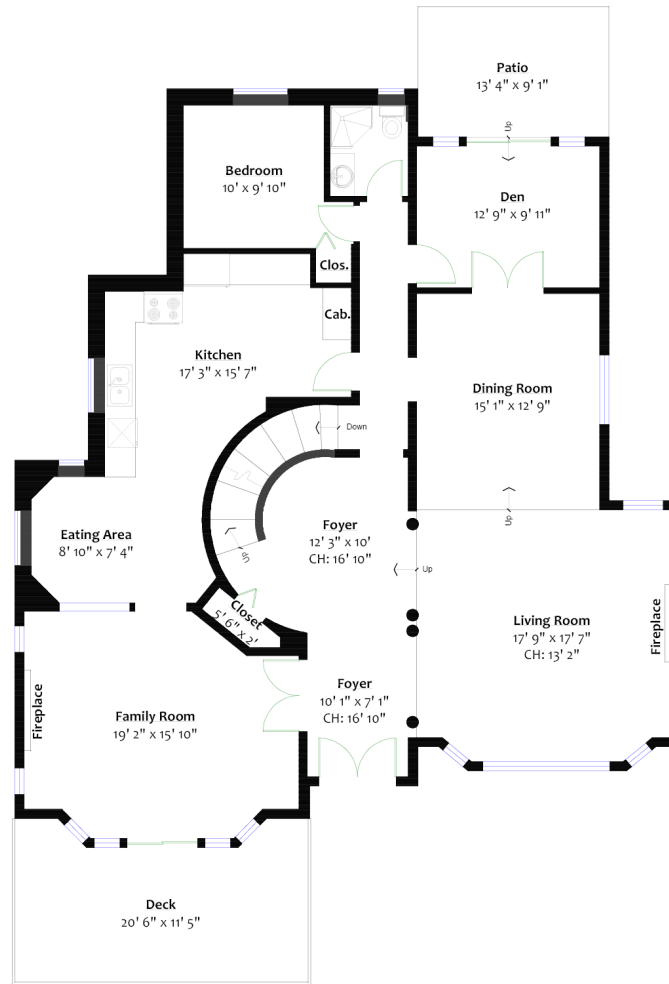
Main Level: 1,908 sq/ft
 Upper Level: 1,413 sq/ft
 Lower Level: 1,076 sq/ft
 TOTAL: 4,397 sq/ft

Deck: 208 sq/ft
 Patio: 121 sq/ft
 Primary Deck: 51 sq/ft
 Garage: 400 sq/ft



UPPER LEVEL

Floor Area: 1,413 Sq. Ft.
 Ceiling Height: 8'



MAIN LEVEL

Floor Area: 1,908 Sq. Ft.
 Ceiling Height: 8'



LOWER LEVEL

Floor Area: 1,076 Sq. Ft.
 Ceiling Height: 7' 6"

Layout by by BC Floorplans.
 Sq/ft & room measurements are approx. based on interior measurements to exterior walls.
 Information should not be relied upon without independent verification.
 This communication is not intended to cause or induce breach of an existing agency agreement.