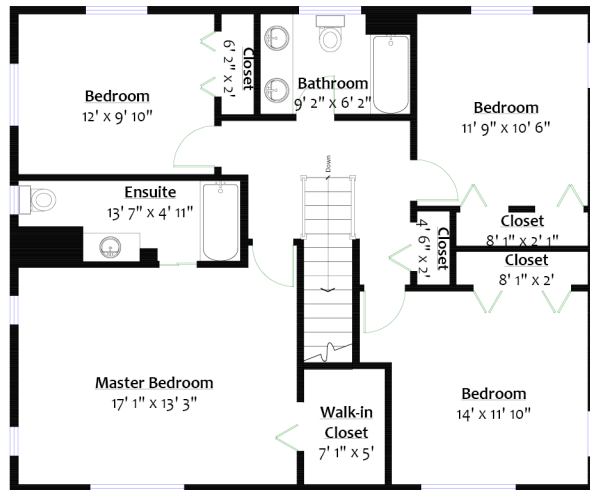




For more information
 Call **604 983 2518** or visit
RealEstateNorthShore.com

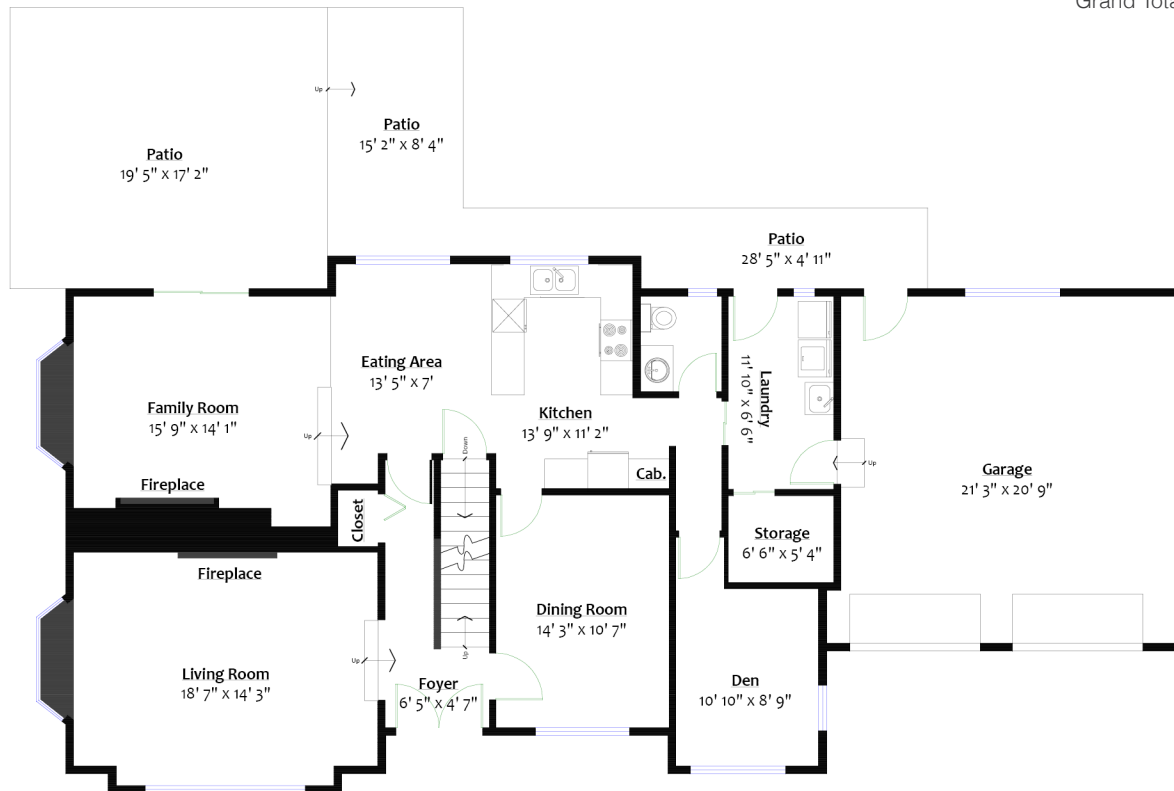


UPPER LEVEL
 Floor Area: 1,065 Sq. Ft.
 Ceiling Height: 8'

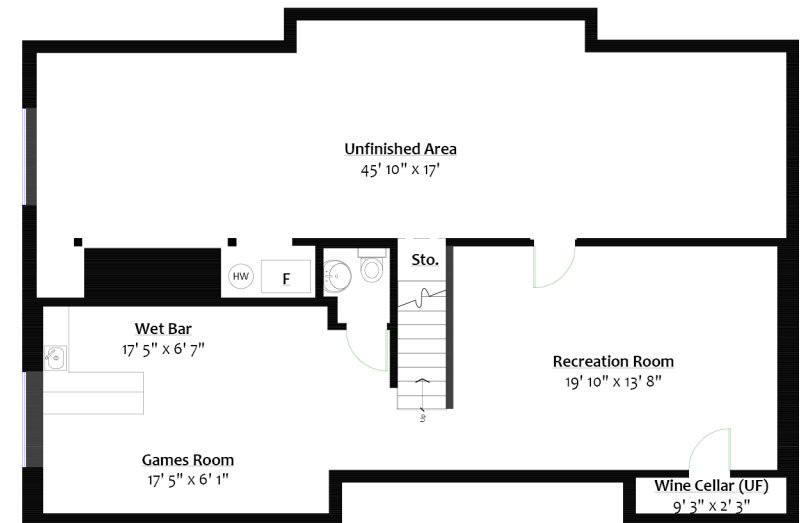
29 10 MARY KIRK PLACE

Blueridge, North Vancouver

Main Level:	1,411 sq/ft	Garage:	473 sq/ft
Upper Level:	1,065 sq/ft	Patio:	578 sq/ft
Lower Level:	788 sq/ft		
Total (fin):	3,264 sq/ft		
Unfinished:	592 sq/ft		
Wine Cellar:	21 sq/ft		
Grand Total:	3,877 sq/ft		



MAIN LEVEL
 Floor Area: 1,411 Sq. Ft.
 Ceiling Height: 8'



LOWER LEVEL
 Finished Floor Area: 788 Sq. Ft.
 Unfinished Floor Area: 622 Sq. Ft.
 Ceiling Height: 8'

Sq/ft & room measurements are approx. based on interior measurements to exterior walls by BC Floorplans. Information should not be relied upon without independent verification. This communication is not intended to cause or induce breach of an existing agency agreement.