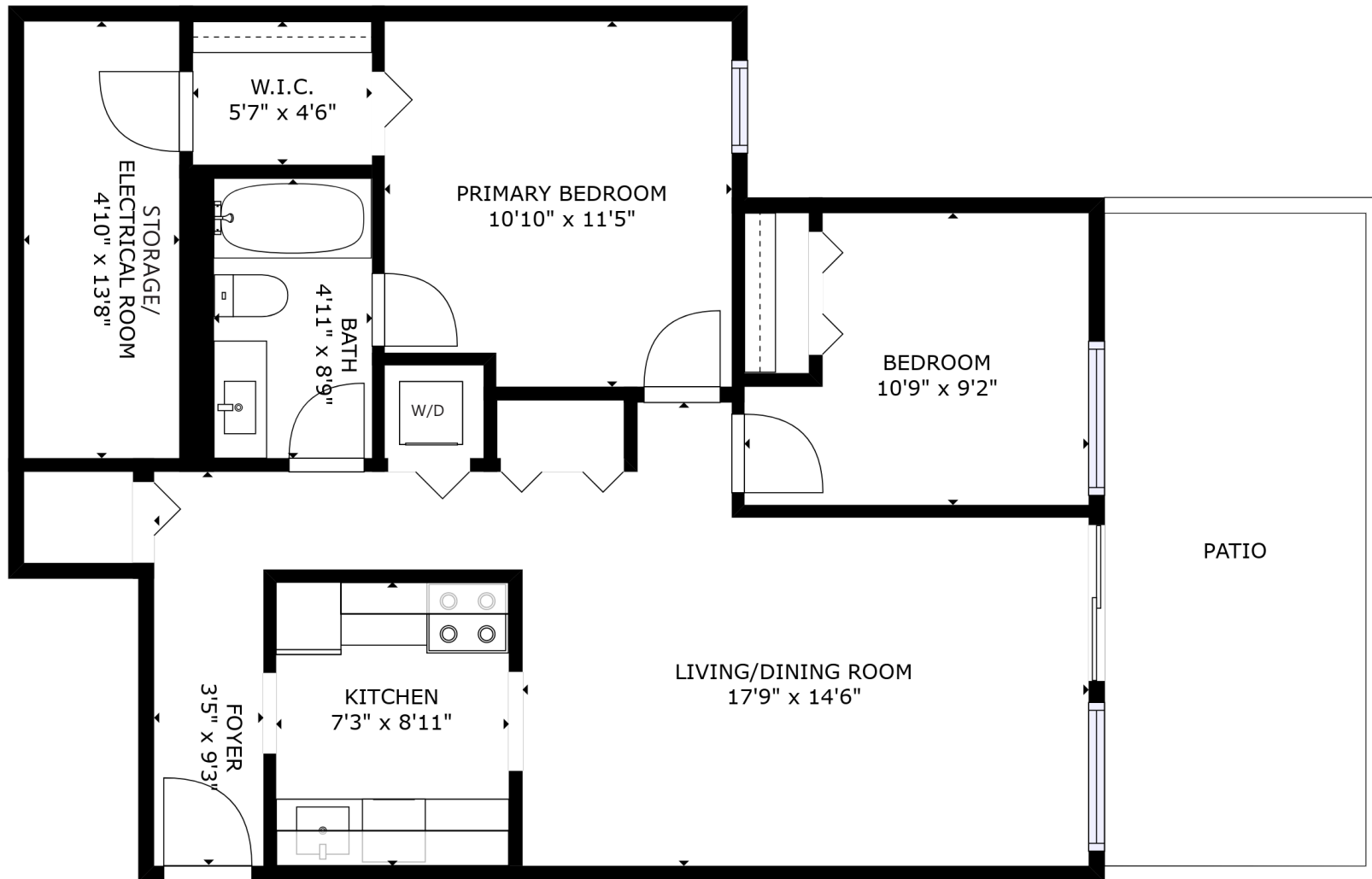




For more information  
Call [604 983 2518](tel:6049832518) or visit  
[RealEstateNorthShore.com](http://RealEstateNorthShore.com)

**2060 PURCELL WAY**  
Lynnmour, North Vancouver



FLOOR AREA: 792 SQ/FT

Square footage from strata plan. Layout and measurements by Matterport.  
Square footage, room measurements, & dimensions are approximate and not guaranteed.  
Information should not be relied upon without independent verification.  
This communication is not intended to cause or induce breach of an existing agency agreement.