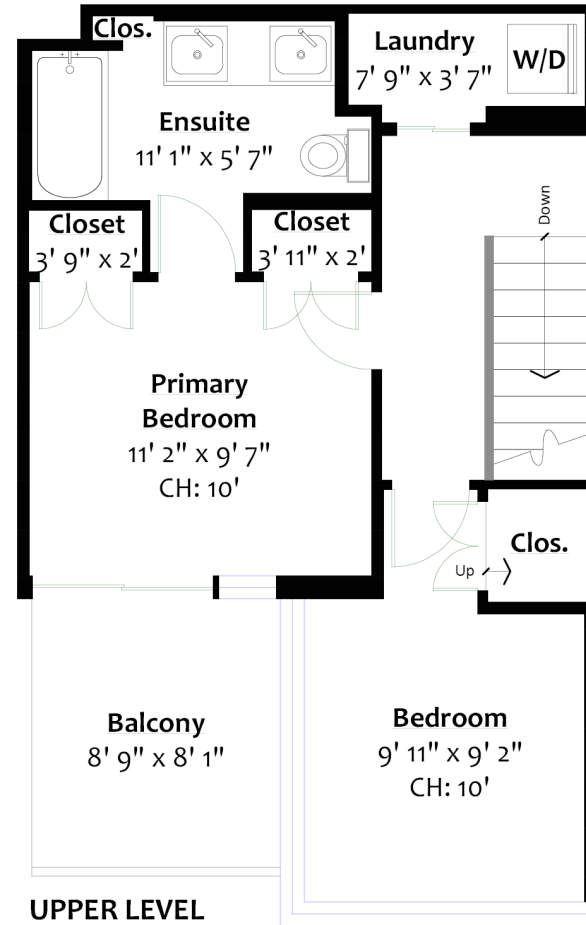


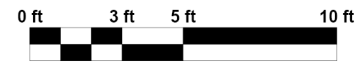
MAIN LEVEL

Floor Area: 540 Sq. Ft.
Ceiling Height: 8' 10"



UPPER LEVEL

Floor Area: 475 Sq. Ft.
Ceiling Height: 8' 10"



1621 EASTERN AVENUE

Central Lonsdale, North Vancouver

SQ/FT TOTALS

Main Level:	540 sq/ft	Patio:	253 sq/ft
Upper Level:	475 sq/ft	Balcony:	73 sq/ft
TOTAL:	1,015 sq/ft		

Layout by by BC Floorplans.
Sq/ft & room measurements are approx. based on interior measurements to exterior walls.
Information should not be relied upon without independent verification.
This communication is not intended to cause or induce breach of an existing agency agreement.