



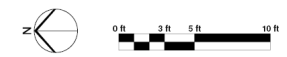
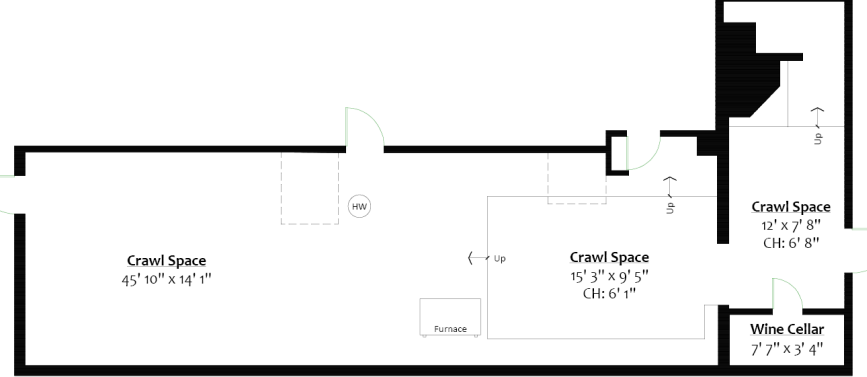
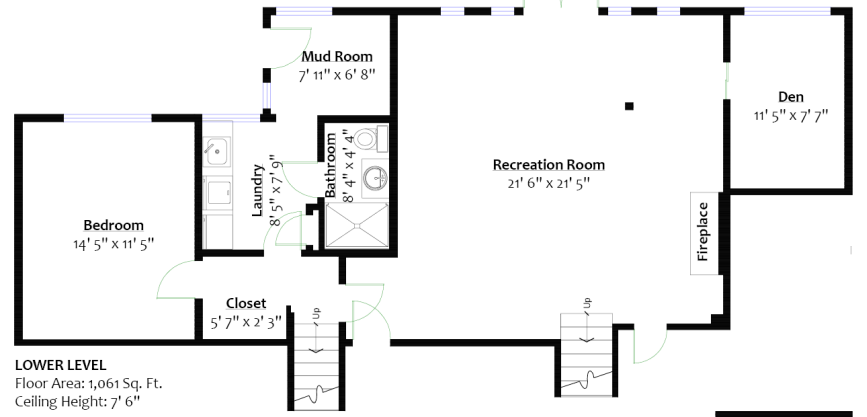
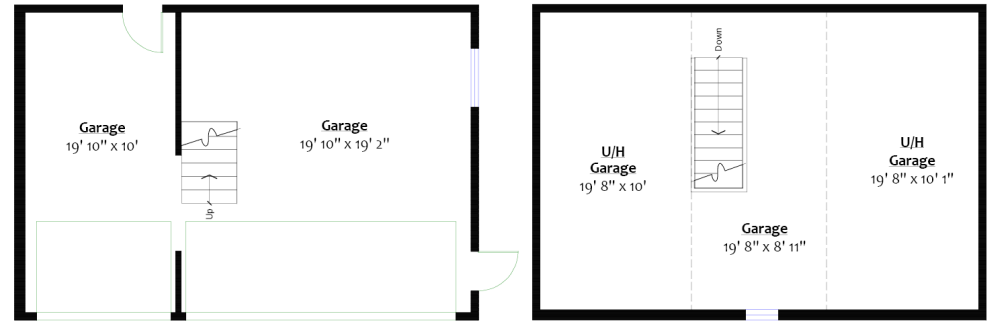
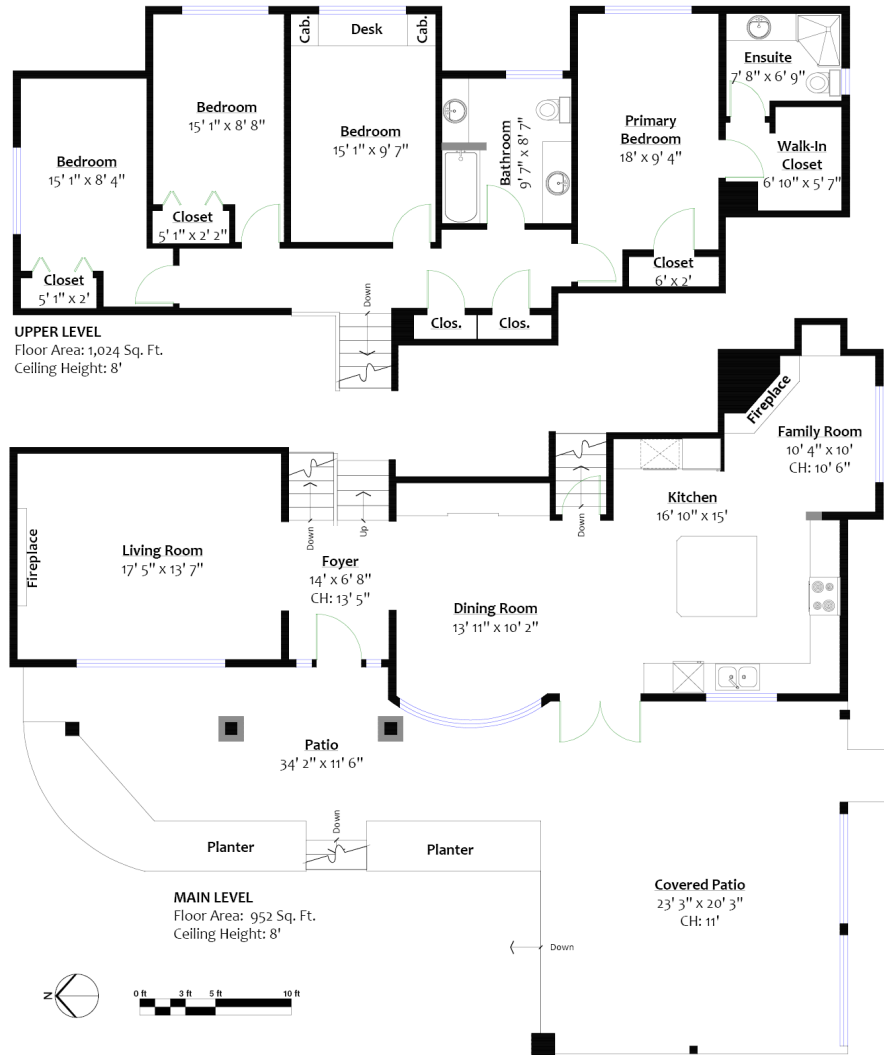
For more information
 Call **604 983 2518** or visit
RealEstateNorthShore.com

1082 LODGE ROAD

Sunset Gardens, North Vancouver

SQ/FT TOTALS

Main Level:	952 sq/ft	Crawl Space:	935 sq/ft
Upper Level:	1,024 sq/ft	Patio:	749 sq/ft
Lower Level:	1,061 sq/ft	Garage Main:	637 sq/ft
Total:	3,037 sq/ft	Garage Upper:	623 sq/ft



Layout by BC Floorplans. E&O Insured for \$1,000,000
 While all reasonable attempts have been made to ensure accuracy and the square footage and room dimensions are believed to be correct to ANSI Standards, due to the possibility of human error the information cannot be guaranteed. Information should not be relied upon without independent verification.
 This communication is not intended to cause or induce breach of an existing agency agreement.