



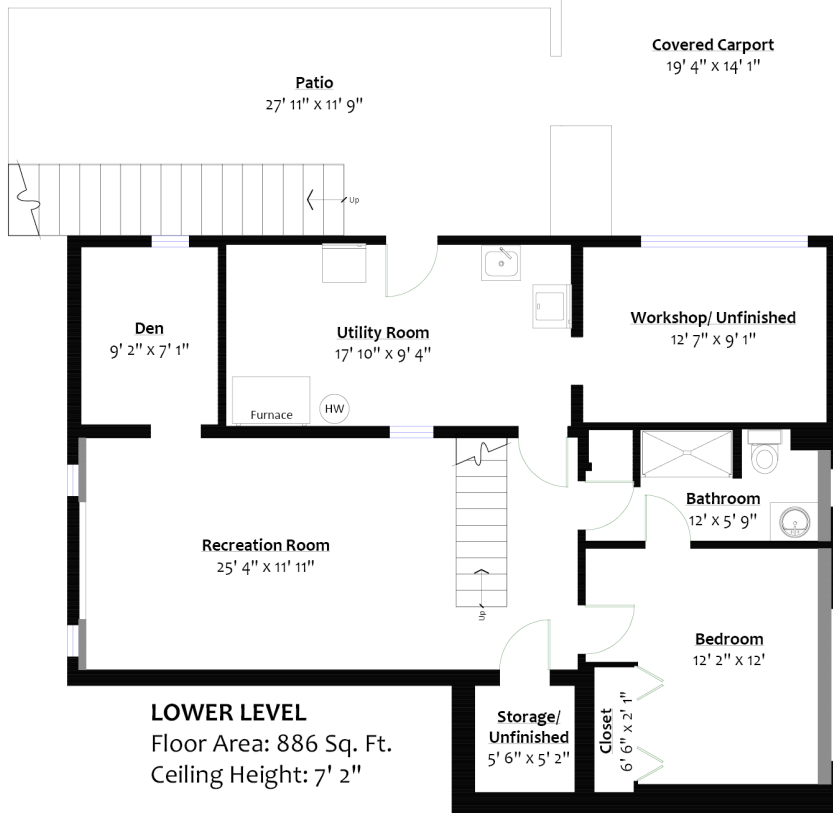
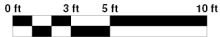
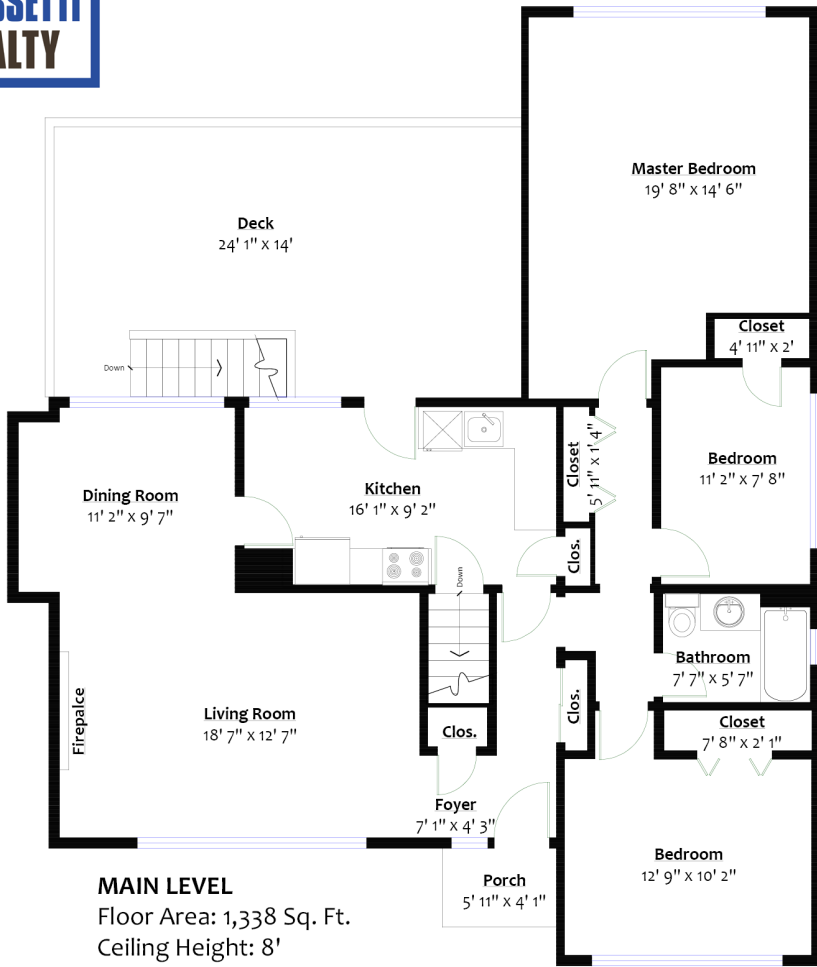
1043 WHITCHURCH STREET

Calverhall, North Vancouver

SQ/FT TOTALS

Main Level: 1,338 sq/ft
 Lower Level: 886 sq/ft
 Total: 2,227 sq/ft
 Unfinished: 170 sq/ft
 Grand Total: 2,394 sq/ft

Deck: 324 sq/ft
 Patio: 268 sq/ft
 Front Porch: 24 sq/ft
 Carport: 257 sq/ft



Layout by BC Floorplans.
 Sq/ft & room measurements are approx. based on interior measurements to exterior walls.
 Information should not be relied upon without independent verification.
 This communication is not intended to cause or induce breach of an existing agency agreement.