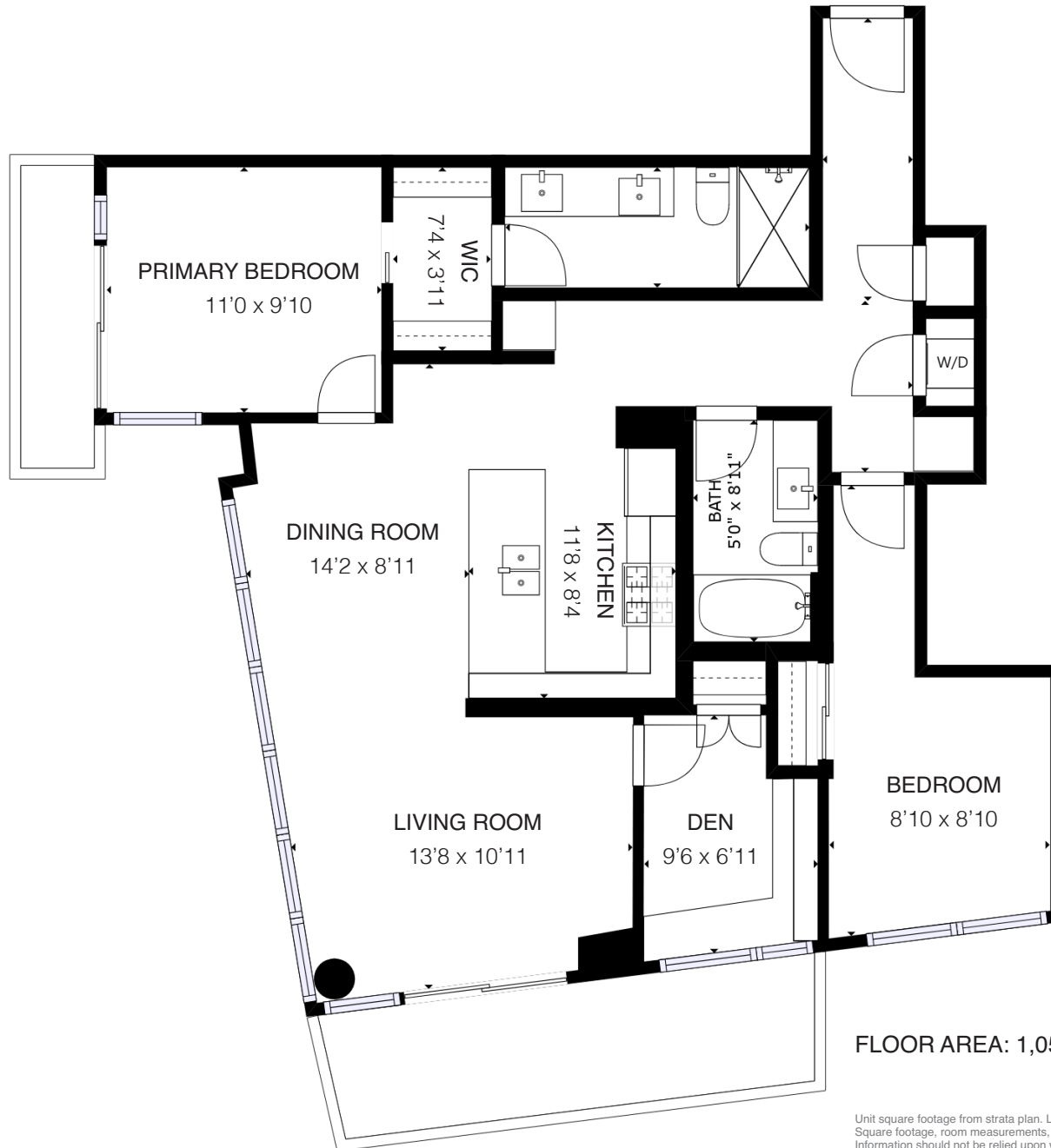




For more information
Call [604 983 2518](tel:6049832518) or visit
RealEstateNorthShore.com

2104 125 E 14TH STREET

Central Lonsdale, North Vancouver



FLOOR AREA: 1,053 SQ/FT

Unit square footage from strata plan. Layout, patio area, & room measurements by Matterport. Square footage, room measurements, & dimensions are approximate and not guaranteed. Information should not be relied upon without independent verification. This communication is not intended to cause or induce breach of an existing agency agreement.