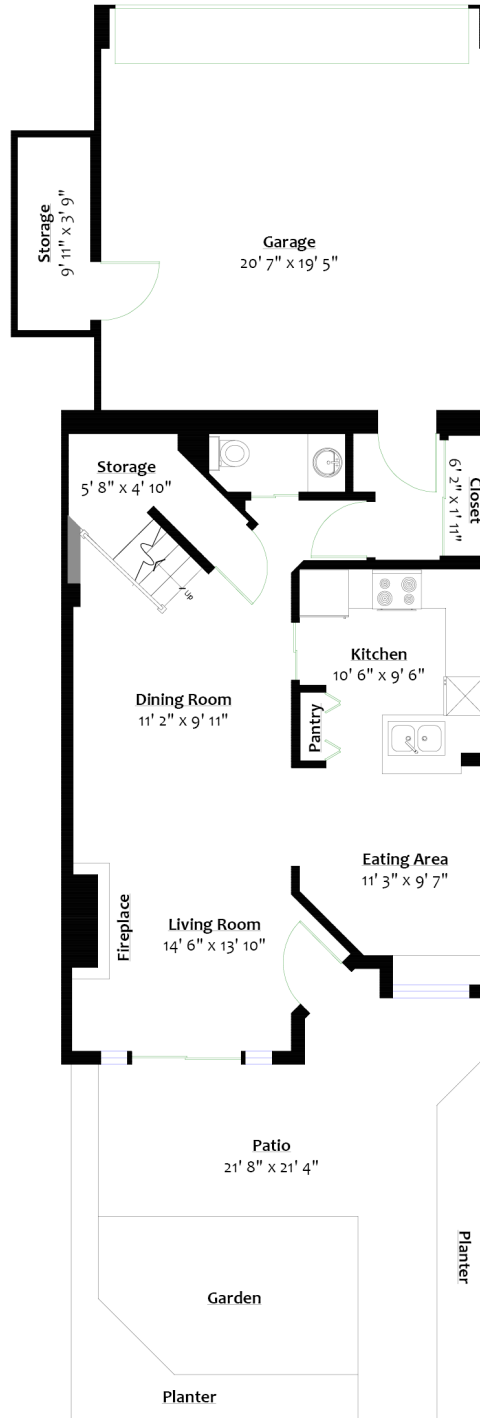




# 113-3600 WINDCREST DR

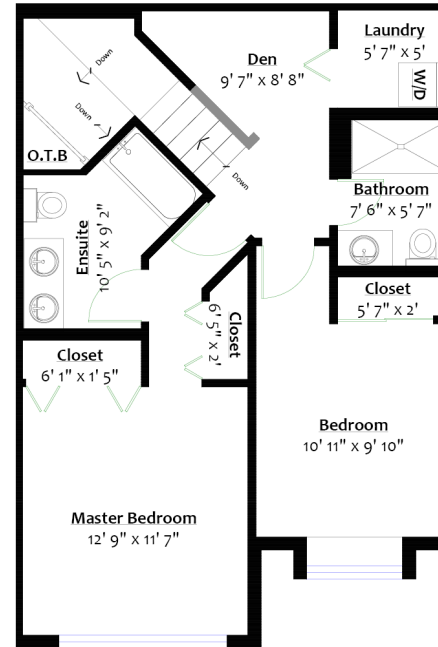
Roche Point, North Vancouver



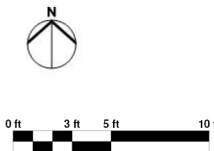
**MAIN LEVEL**  
 Floor Area: 703 Sq. Ft.  
 Ceiling Height: 9'

**SQ/FT**

Main Level:	703 sq/ft	Garage:	423 sq/ft
Upper Level:	684 sq/ft	Storage:	43 sq/ft
Total:	1,387 sq/ft	Patio:	213 sq/ft



**UPPER LEVEL**  
 Floor Area: 684 Sq. Ft.  
 Ceiling Height: 9'



Sq/ft & room measurements are approx. based on interior measurements to exterior walls by BC Floorplans. Information should not be relied upon without independent verification. This communication is not intended to cause or induce breach of an existing agency agreement.

For more information  
 Call **604 983 2518** or visit  
[RealEstateNorthShore.com](http://RealEstateNorthShore.com)