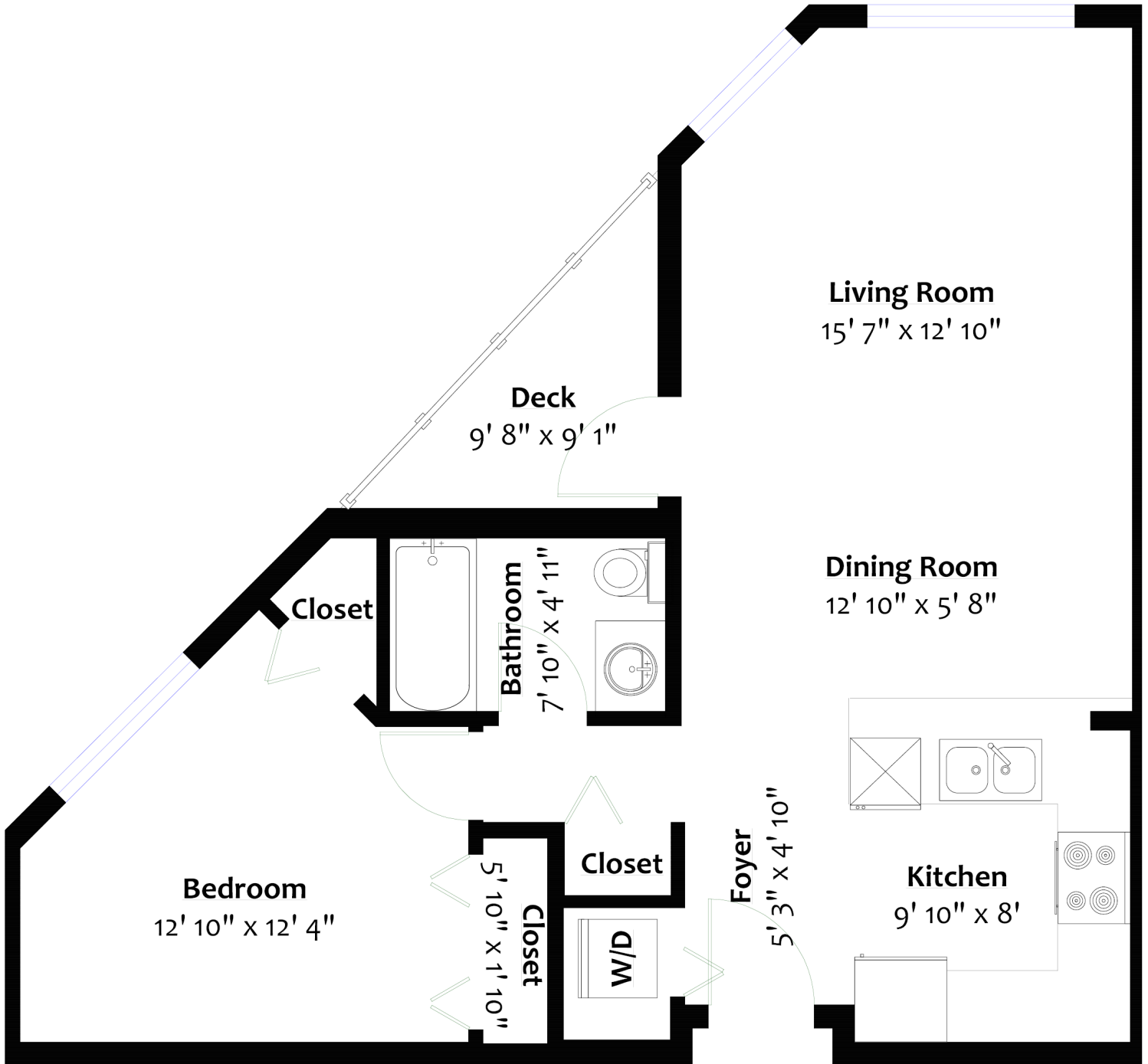


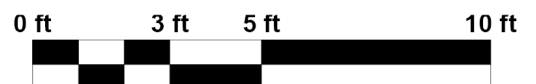


102 183 W 23RD STREET

Central Lonsdale, North Vancouver



FLOOR AREA: 657 SQ/FT
DECK: 44 SQ/FT



Sq/ft & room measurements are approx. based on interior measurements to exterior walls by BC Floorplans. Information should not be relied upon without independent verification. This communication is not intended to cause or induce breach of an existing agency agreement.