



**102-183 W 23RD STREET**

**NORTH VANCOUVER**



# QUIET 1 BDRM IN CENTRAL LONSDALE'S 'CREEKMONT ESTATES'

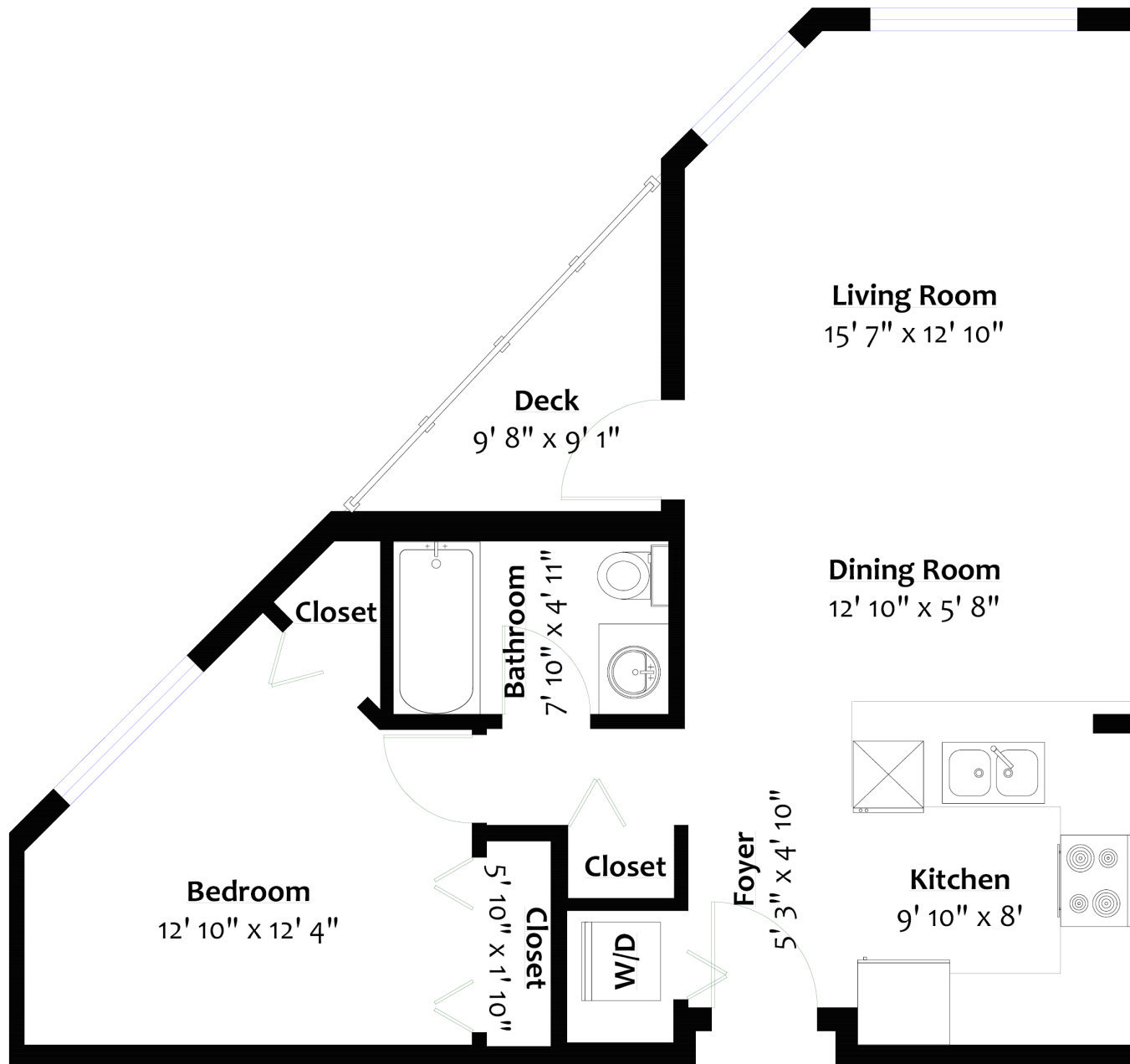
1 Bed | 1 Bath | 657 Sq/ft

■ Quiet, ground floor 1 Bdrm in Central Lonsdale's 'Creekmont Estates'. This corner suite offers over 650 sq/ft with an open concept layout and large picture windows to a tranquil, private outlook. The spacious kitchen features freshly painted shaker cabinets, plenty of counter space, and stainless appliances. The dining/living rooms are a great size for entertaining, with ample space for house sized furniture including a 6 person table and large sectional sofa. Completing the home is the generous sized master bedroom (with room for a king bed), 4-piece bathroom, and an intimate patio with room for a bistro table and chairs, plus BBQ. Additional features include 9' ceilings, laminate and tile floors, and in-suitelaundry(newthisyear). Includes 1 secured parking space and a storage locker. One pet and long-term rentals allowed. Situated on the quiet, south side of the building on the lobby level for easy access to all Lonsdale amenities including Harry Jerome Rec Centre, parks, transit, shops, restaurants, and more.









FLOOR AREA: 657 SQ/FT  
DECK: 44 SQ/FT



Sq/ft & room measurements are approx. based on interior measurements to exterior walls by BC Floorplans.  
Information should not be relied upon without independent verification.  
This communication is not intended to cause or induce breach of an existing agency agreement.

For more information  
Call **604 983 2518** or visit  
**RealEstateNorthShore.com**