



**906 108 E 14TH STREET**

**NORTH VANCOUVER**



# CENTRAL LONSDALE SOUTHWEST FACING SUP-PENTHOUSE

2 Beds | 2 Baths | 1,033 Sq/Ft

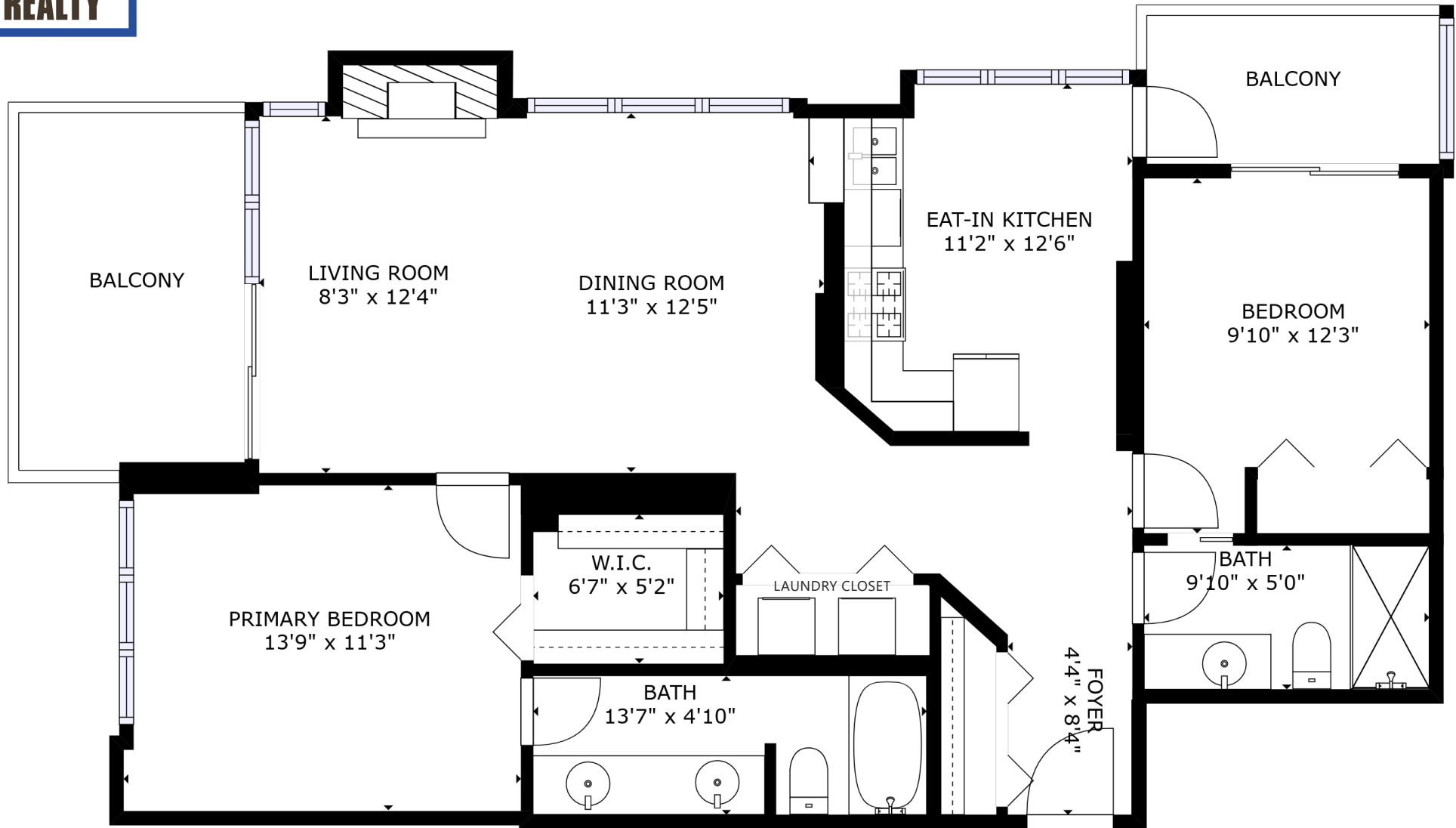
■ Southwest facing sub-penthouse in the heart of Central Lonsdale. Offering 2 bedrooms, 2 bathrooms, and over 1,000 sq/ft with a terrific bright exposure and sweeping city skyline, mountain, and sunset views. Featuring an open plan living/dining room with floor-to-ceiling windows, gas burning fireplace, and sliders to a south facing balcony. The balcony is an ample size, with room for a table and chairs, and perfect for evening entertaining and enjoying the sunsets. The kitchen offers stainless appliances, room for an eating area, and features a practical pass through to the dining room. The two bedrooms are well separated and include a spacious primary suite with lie-in bed views, a large walk-in closet, and a 5-piece ensuite with side-by-side sinks and a large soaker tub. The second bedroom is an ample size and includes access to a west facing balcony and features a semi-ensuite 3-piece bathroom. Completing the home is a large laundry closet with a full-size washer and dryer, plus storage space. Includes 1 storage locker and 2 secured parking stalls. In the well-regarded 'Piermont' building in an awesome location featuring a Walk Score of 90!! with all Central Lonsdale amenities at your doorstep including Library Square, Whole Foods, Lions Gate Hospital, and all the area's great shops and restaurants.











FLOOR AREA: 1,033 SQ/FT

Square footage from strata plan. Layout and measurements by Matterport.  
Square footage, room measurements, & dimensions are approximate and not guaranteed.  
Information should not be relied upon without independent verification.  
This communication is not intended to cause or induce breach of an existing agency agreement.

For more information  
Call **604 983 2518** or visit  
[RealEstateNorthShore.com](http://RealEstateNorthShore.com)