

**ROSSETTI**



**7 240 EAST KEITH ROAD**

**CENTRAL LONSDALE, NORTH VANCOUVER**

# UPDATED 3 BDRM CENTRAL LONSDALE TOWNHOME

3 Beds | 3 Baths | 1,530 Sq/Ft

■ Updated open-plan townhome in a convenient central location along the Green Necklace. Designed for relaxed living and entertaining, this home offers 3 bedrooms, 3 bathrooms, and over 1,500 sq.ft. of interior space plus 800 sq.ft. of outdoor areas including two patios off the main and a private rooftop deck.

The main level was extensively updated in 2017, creating a modern open-concept layout with seamless flow between the living, dining, and kitchen areas. A sunny south-facing living room features a large picture window overlooking the front patio and an electric fireplace for added warmth and ambiance (roughed-in with natural gas). The adjoining dining area easily accommodates family gatherings and flows into the stylish kitchen, complete with a large island, quartz countertops, two-tone cabinetry, and stainless-steel appliances. A skylight and windows overlooking the rear patio provide added natural light, while the private outdoor area offers an ideal setting for outdoor dining and summer barbecues. An updated 2-piece powder room and convenient in-suite laundry complete the main floor.

Upstairs offers three bedrooms and two full bathrooms, including a spacious primary suite with vaulted ceilings, a flexible study area, and a 3-piece ensuite with jetted tub. Two additional bedrooms are comfortably sized and share access to a beautifully renovated bathroom featuring a frameless glass shower, updated tilework, NuHeat in-floor heating, and a modern vanity.

A staircase leads to an expansive nearly 300 sq.ft. rooftop deck with partial city and mountain views, providing the perfect setting for summer entertaining, relaxing, or enjoying the sunshine.

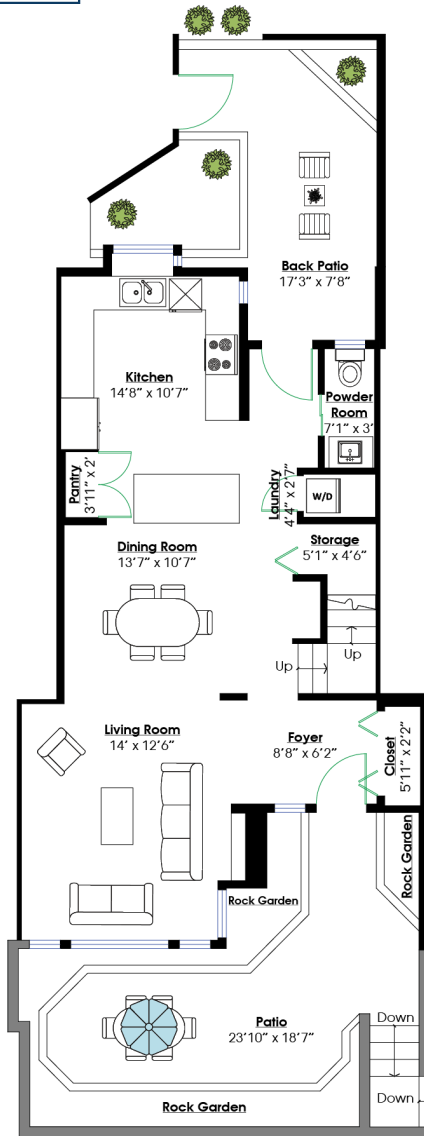
Includes two secure underground parking spaces. In Keith Views Mews - a boutique self-managed strata of just eight homes, with a recent 2025 depreciation report. Ideally situated between Central and Lower Lonsdale, you'll enjoy easy access to shops, restaurants, recreation, transit, and everyday amenities, with direct access to the Green Necklace trail right outside your door.

A rare opportunity to enjoy generous indoor and outdoor living in an intimate strata setting, just moments from everything Lonsdale has to offer.

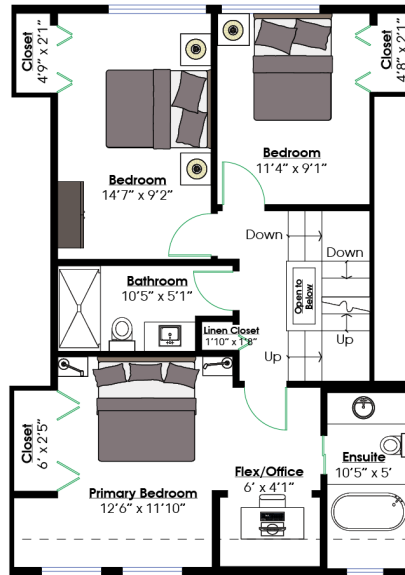




# ROSSETTI



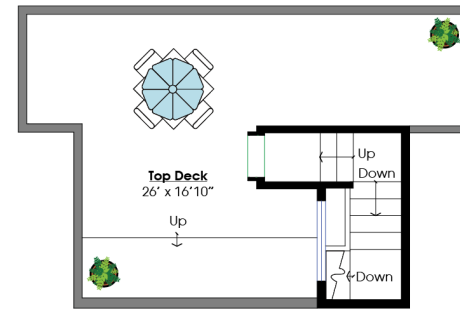
**MAIN LEVEL**  
 Floor Area: 732 Sq. Ft.  
 Ceiling Height: 8'1"



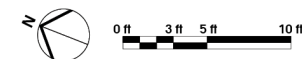
**UPPER LEVEL**  
 Floor Area: 728 Sq. Ft.  
 Ceiling Height: 8'1"

## SQ/FT TOTALS \*\*

Main Level:	732 sq/ft	Patio:	305 sq/ft
Upper Level:	728 sq/ft	Back Patio:	209 sq/ft
Top Level:	70 sq/ft	Rooftop Deck:	299 sq/ft
<b>TOTAL:</b>	<b>1,530 sq/ft</b>		



**TOP LEVEL**  
 Floor Area: 70 Sq. Ft.  
 Ceiling Height: 5'9"



Layout by BC Floorplans. \*\* While all reasonable attempts have been made to ensure accuracy and the square footage and room dimensions are believed to be correct to ANSI Standards, due to the possibility of human error the information cannot be guaranteed. E60 Insured for \$1,000,000. Includes under-height areas. Information should not be relied upon without independent verification.