

ROSSETTI

303 116 WEST 23RD STREET

CENTRAL LONSDALE, NORTH VANCOUVER

Addison
116





MOUNTAIN VIEW 2 BEDROOM AT THE ADDISON

2 Beds | 2 Baths | 860 Sq/Ft

■ This quiet north-facing 2 bedroom, 2 bathroom home at The Addison offers 860 sq/ft of thoughtfully designed living in the heart of Central Lonsdale.

The open-concept layout features windows framing beautiful garden and Grouse Mountain views, a cozy gas fireplace, and access to a balcony to enjoy the peaceful outlook. The kitchen blends timeless style and functionality with rich wood cabinetry, granite countertops, a peninsula with bar seating, stainless steel appliances, and a gas cooktop.

The well-separated bedroom layout offers excellent privacy, with a spacious primary bedroom large enough for a king-sized bed and additional wardrobes, featuring direct balcony access, a walk-through closet, and a 3-piece ensuite. The second bedroom is also generously sized and works equally well as a guest room, home office, nursery, or flex space.

Additional features include a 4-piece second bathroom, a proper foyer entrance with a walk-in closet, in-suite laundry, California Closets, two window seats with built-in storage, 1 secure underground parking stall, and a separate storage locker.

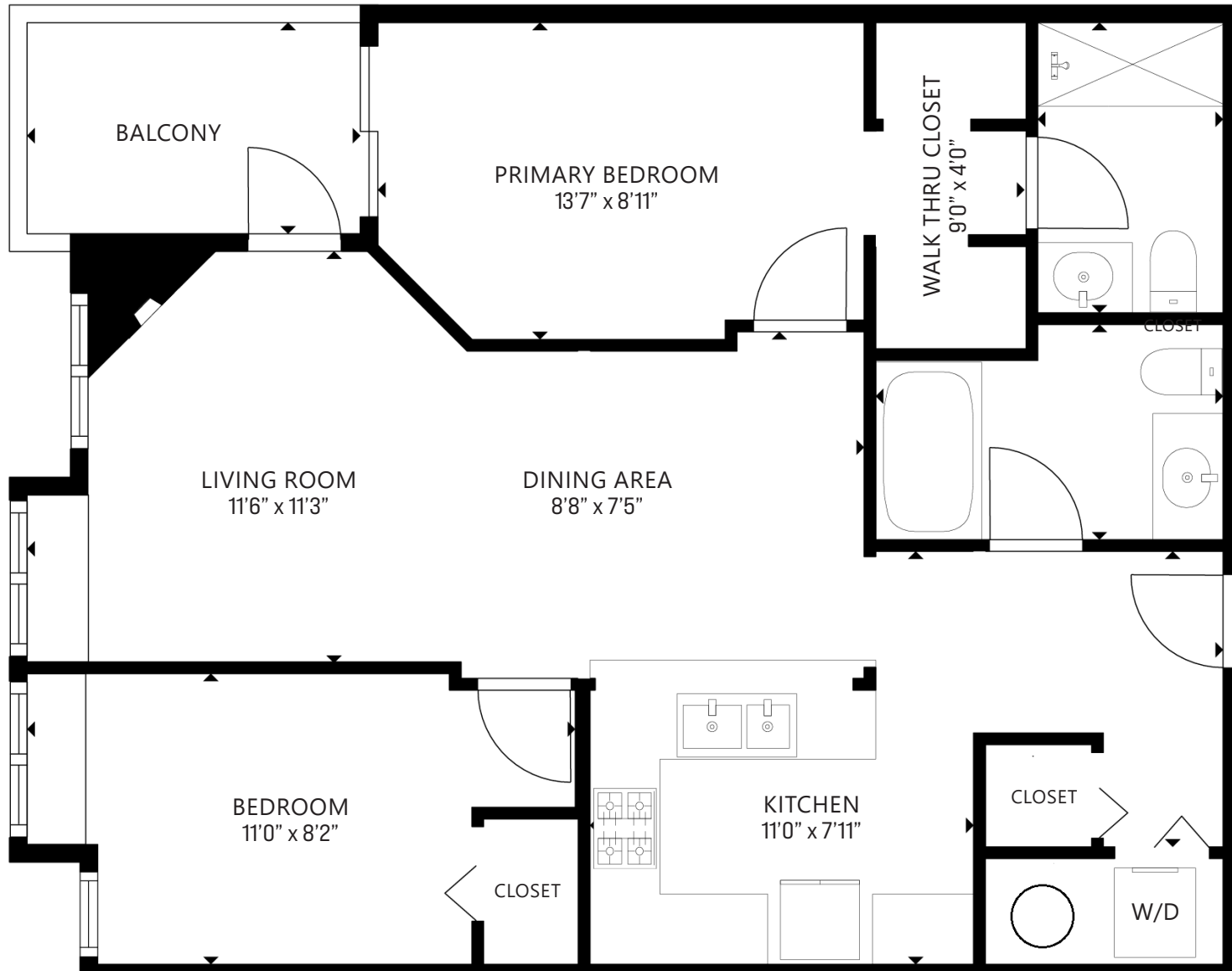
Built in 2010, The Addison is an award-winning boutique heritage conservation project that blends timeless character with modern design. Located in the heart of Central Lonsdale, this home is steps to shops, cafés, parks, transit, and the soon to be completed rebuilt Harry Jerome Recreation Centre, with quick access to Highway 1 and downtown Vancouver.

A peaceful North Shore setting paired with everyday convenience makes this an exceptional place to call home.





ROSSETTI



FLOOR AREA: 860 SQ.FT.

Interior square footage from strata plan. Layout and measurements from Matterport. Square footage, room measurements, & dimensions are approximate and not guaranteed. Information should not be relied upon without independent verification. This communication is not intended to cause or induce breach of an existing agency agreement.