

A photograph of a modern two-story house. The house features a combination of brick and white stucco siding. On the ground floor, there is a large glass sliding door leading to a patio area. Above it is a balcony with a black metal railing and glass panels. The house is surrounded by lush greenery, including a large tree on the left, a large tree on the right, and various shrubs and plants in the garden. A concrete walkway leads from the foreground towards the house. The overall scene is bright and well-maintained.

**ROSSETTI**

**302 1515 CHESTERFIELD AVENUE**

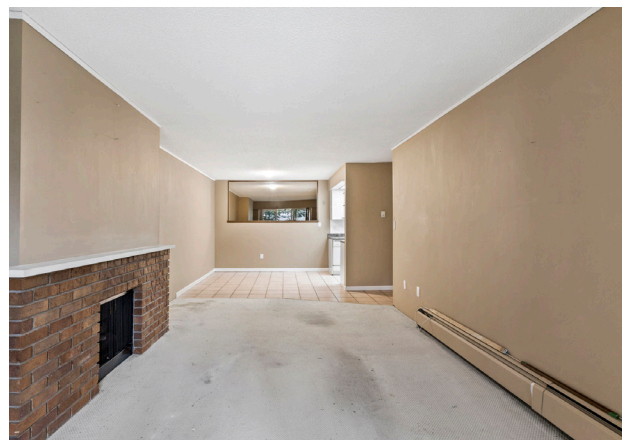
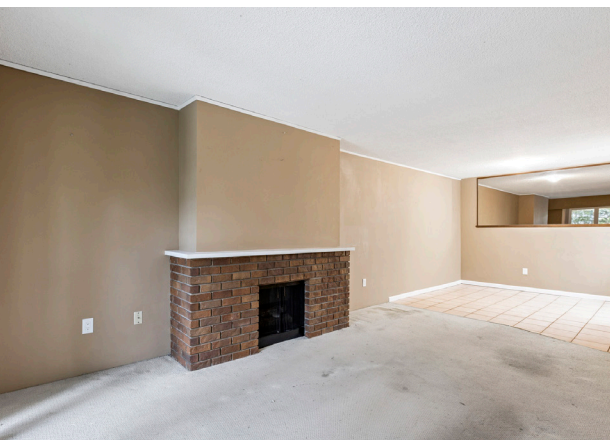
Central Lonsdale, North Vancouver



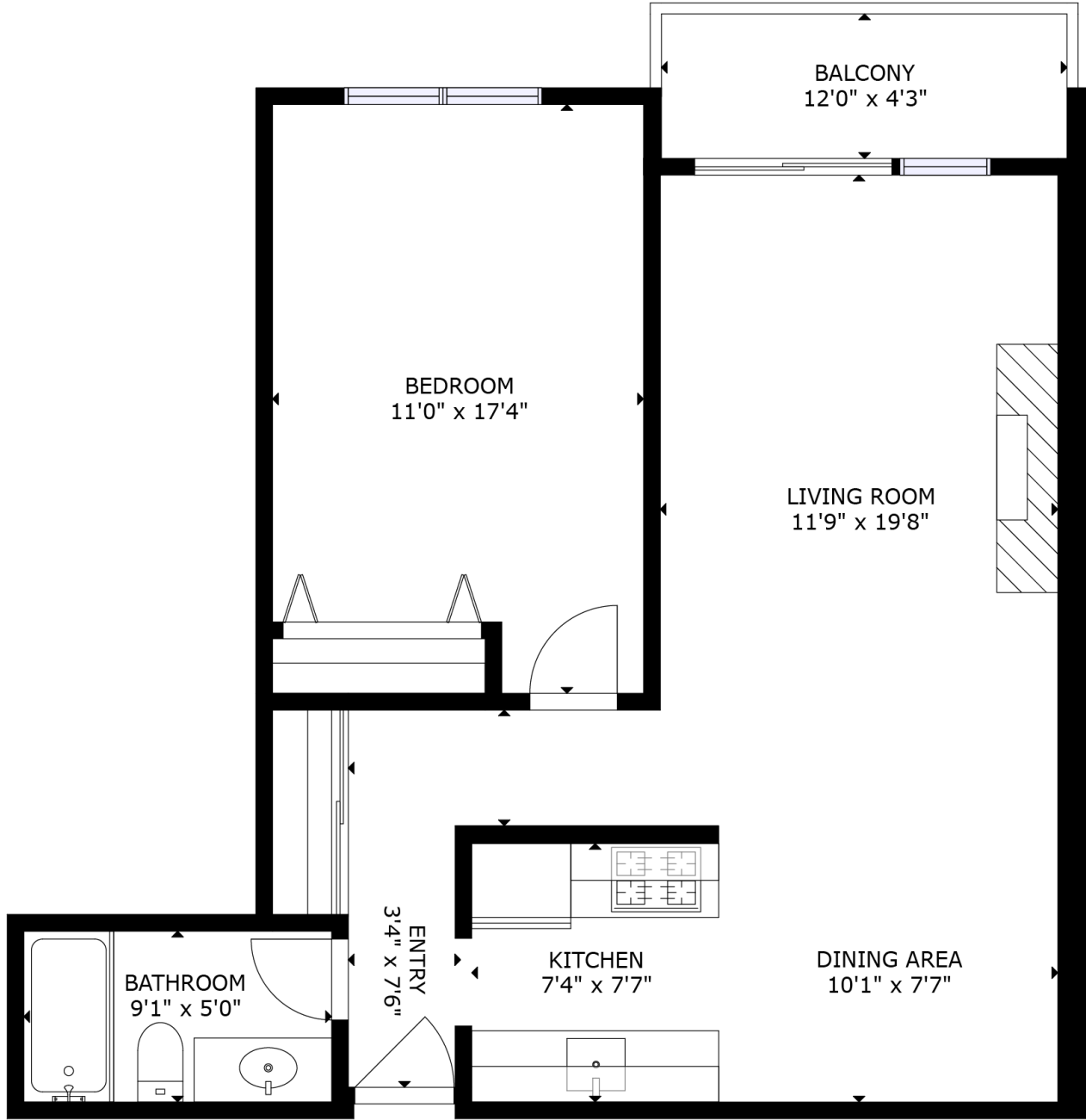
# TOP FLOOR 1 BDRM IN THE HEART OF LONSDALE

1 Bed | 1 Bath | 710 Sq/Ft Condo

■ Top floor 1 bedroom in the heart of Central Lonsdale. Featuring over 700 sq/ft with a practical, traditional plan and private treed outlook. The suite is in original condition and is ready for the next owner to make it their own. Offering a galley kitchen, spacious adjacent dining area, and a large living room with gas burning fireplace and updated sliders to a balcony. Completing the home is a generous sized bedroom, 4-piece bathroom, and a large entry closet. Includes 1 secure parking, storage locker, and shared laundry. Two pets allowed including small dogs (under 45 lbs). Maintenance fees include heat and hot water. Recent building updates include roof (approx 6 years ago) and elevator (2023). Set in a terrific central location with a walk score of 91 and all Lonsdale amenities including Whole Foods, restaurants, transit & Lions Gate Hospital steps from your door.







Interior square footage from strata plan. Layout and measurements by Matterport. Square footage, room measurements, & dimensions are approximate and not guaranteed. Information should not be relied upon without independent verification. This communication is not intended to cause or induce breach of an existing agency agreement.