



236 EAST 4TH STREET
NORTH VANCOUVER

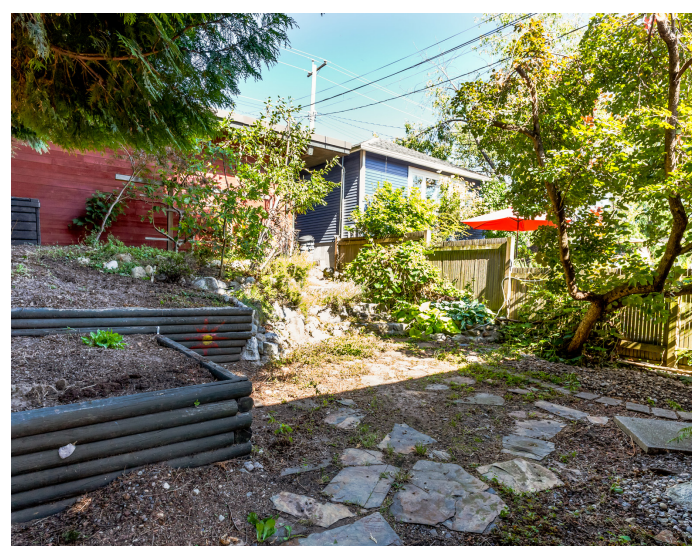
UNIQUE JAPANESE INFLUENCED PACIFIC NW HOME

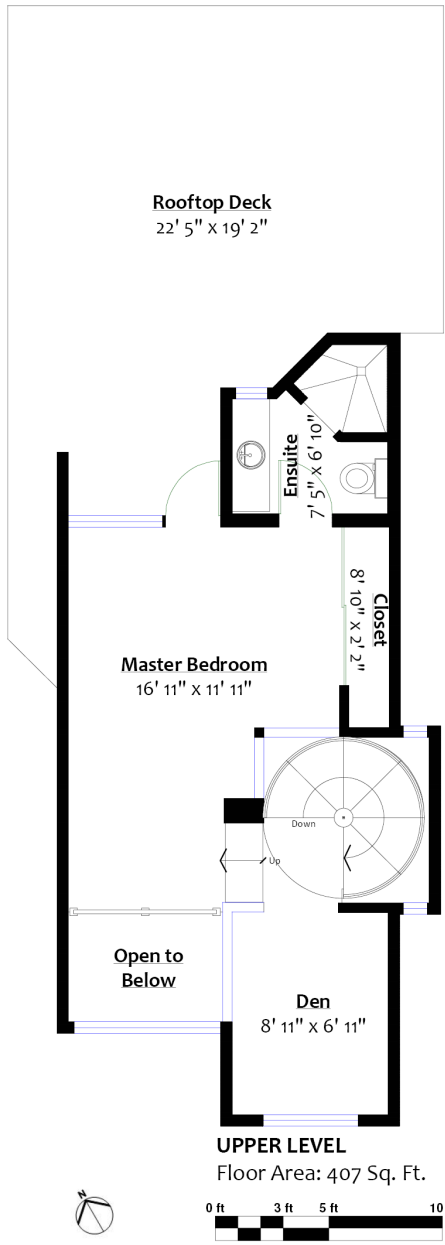
3 Beds | 3 Baths | 1,763 Sq/ft

■ Unique 1979 Japanese influenced Pacific Northwest home designed by local architect and builder Mark Mayall. Meticulously crafted three story home with a plethora of skylights and windows, angled cedar walls and ceilings throughout, oak parquet flooring, and a staircase built by local artist Robert J. McKeller. Each floor has one bedroom and one bath. The top floor features a library, loft, high ceilings, and a view overlooking the Vancouver harbor and downtown Vancouver. The main floor has a wood burning fireplace, an outdoor deck, and multi-leveled ceilings. The lower level also includes a laundry room, storage area, and ample crawl space storage. Surrounded by old growth trees and greenery combined with indoor cedar paneling erases the boundaries between interior & exterior and exudes calmness and warmth. Situated on a 3,500 sq/ft lot with Residential Level 4A with FSR of 1.0 (medium density) zoning under the OCP allowing for future redevelopment potential (confirm with the CNV). Offering a private backyard & lane access to a 2 car garage. Conveniently located in North Vancouver's Lower Lonsdale just a short walk to the Lonsdale Quay and the Shipyards. It is only 30 minutes to the heart of downtown by bus, Seabus, or bicycle and a short drive from Lynn Canyon, Capilano Park, Grouse mountain and Deep Cove.

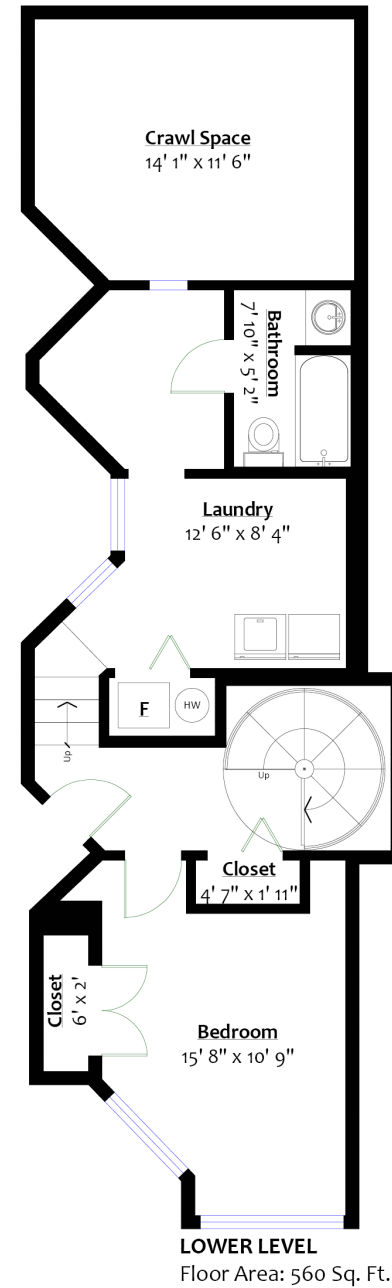
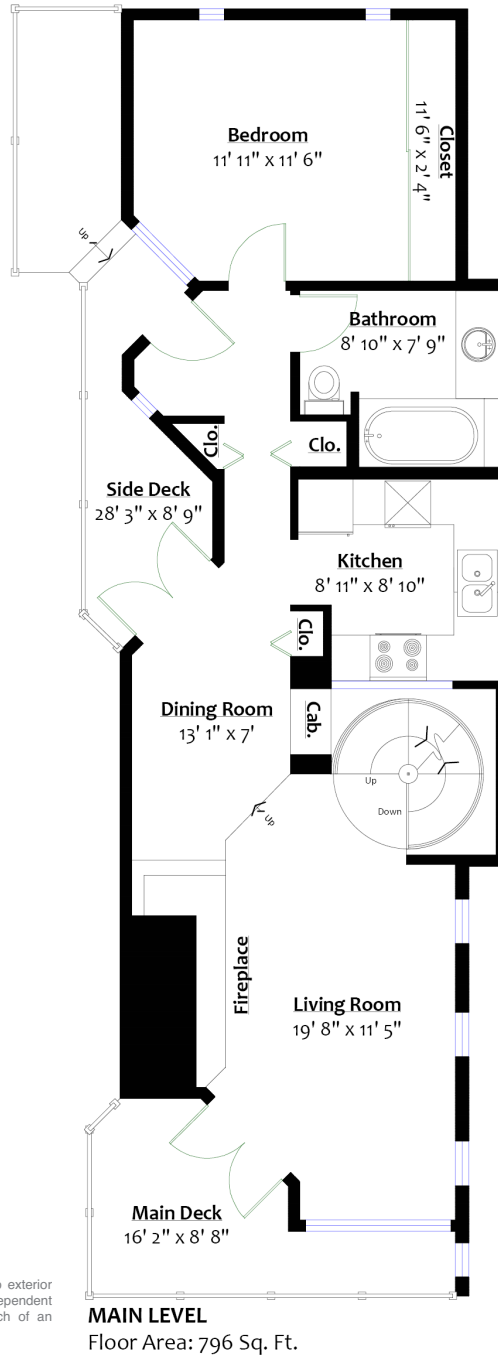
Listed at \$1,230,000







Sq/ft & room measurements are approx. based on interior measurements to exterior walls by BC Floorplans. Information should not be relied upon without independent verification. This communication is not intended to cause or induce breach of an existing agency agreement.



For more information
Call **604 983 2518** or visit
RealEstateNorthShore.com