



20-2133 ST GEORGES AVENUE
NORTH VANCOUVER

BRIGHT & SPACIOUS CENTRAL LONSDALE TOWNHOME

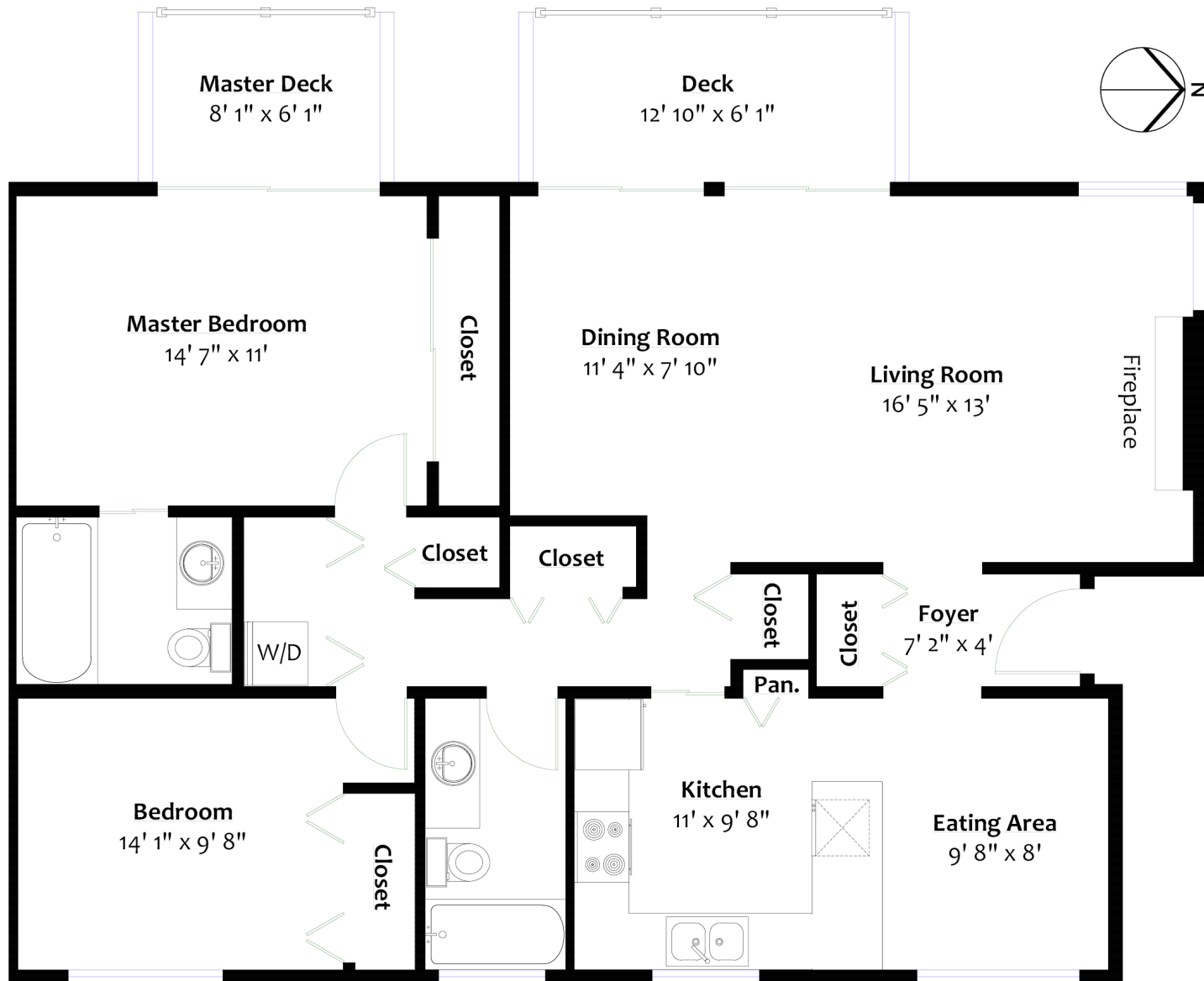
2 Beds | 2 Baths | 1,171 Sq/ft

■ Bright and spacious top floor single level townhome in a sought after Central Lonsdale location. Offering 2 bedrooms, 2 bathrooms, and nearly 1,200 sq/ft of living space. The west facing living/dining room includes an upgraded gas fireplace, corner windows, and sliders to a 84 sq/ft deck, with lovely Lions and Grouse Mountain views, great for summer enjoyment and barbecuing. The family sized kitchen offers plenty of cupboard space, granite counters, and an adjacent eating area/flex space. Includes a large master bedroom with full 4 piece ensuite and private deck with included storage unit. Offering 2 side-by-side spaces in the secured underground parking. Located in the well regarded 'Georgian Court' complex, a small strata of 29 units with recent updates including newer parking membrane, fencing, and roof. Pets allowed with restrictions (1 pet < 44 lbs), rentals not allowed. Superb Central Lonsdale location, steps to Harry Jerome Rec Centre, Norseman Park, transit, and all Lonsdale amenities, yet with easy access across the North Shore and downtown via highway 1.

Listed at \$799,000







MAIN LEVEL

Floor Area: 1,171 Sq. Ft.

All information displayed is believed to be accurate but is not guaranteed and should be independently verified.
Plan prepared by BC Floorplans. Sq/ft approx. based on interior measurements to exterior walls.
This communication is not intended to cause or induce breach of an existing agency agreement.

For more information
Call **604 983 2518** or visit
RealEstateNorthShore.com