



ROSSETTI

2060 DEEP COVE CRESCENT

DEEP COVE, NORTH VANCOUVER

SPACIOUS 4-BED DEEP COVE TOWNHOME

4 Beds | 3 Baths | 1,777 Sq/Ft

■ Enjoy the best of Deep Cove living in this spacious 4-bedroom townhome, ideally located just steps from the Village yet tucked away to feel peacefully removed from the crowds.

Designed with family living in mind, the home offers a functional and inviting floor plan. The main level features a cosy living and dining area with an electric fireplace and sliding doors that open onto a generous private, fenced patio—perfect for entertaining. With direct access to the common grounds, this outdoor space is ideal for kids and pets. The kitchen provides ample cupboard space and an adjacent eating area, well suited for casual dining. A convenient 2-piece bathroom completes the main floor.

Upstairs, you'll find three comfortable bedrooms and a tastefully updated 4-piece bathroom. The lower level adds excellent flexibility with a family room, flex space, 3-piece bathroom, laundry/utility room, and a fourth bedroom—ideal for guests, students, or a home office. Recent updates include durable vinyl flooring, double-paned windows and sliders, an updated basement, and refreshed bathrooms.

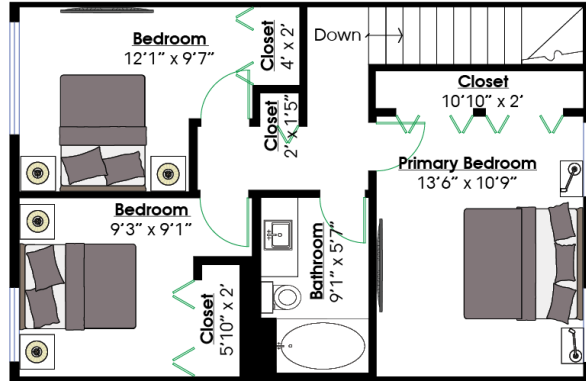
Step outside and enjoy all that Deep Cove is known for, with shops and restaurants just moments away, including Honey's Donuts, Arm's Reach Bistro, and more. This prime location is perfect for an active lifestyle, offering easy access to paddle boarding and kayaking, the marina, nearby hiking trails, and a short drive to skiing, biking, and golf.

Experience the ideal combination of village charm, family-friendly living, and peaceful privacy.





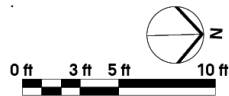
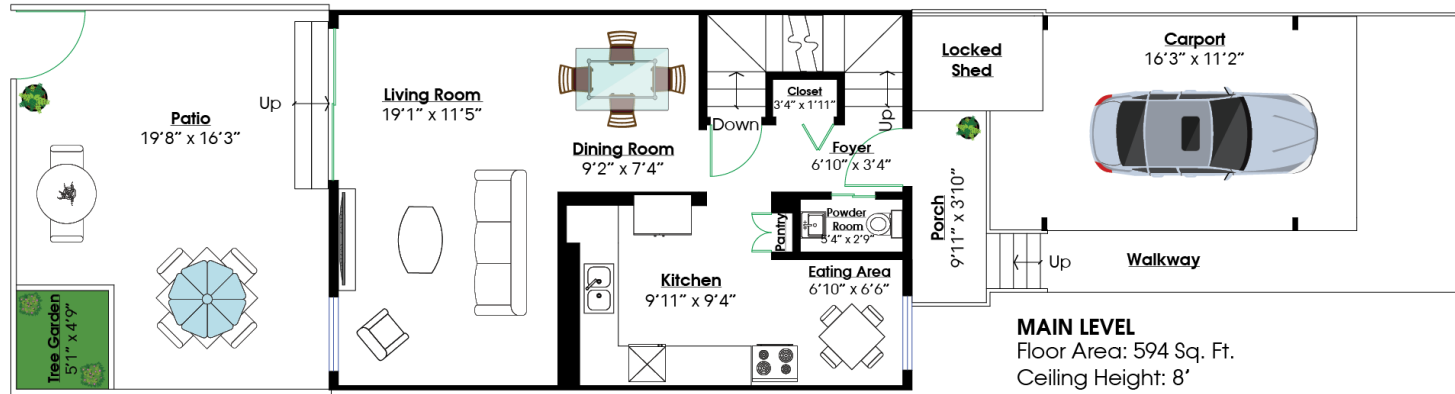
ROSSETTI



SQ/FT TOTALS **

| | | | |
|--------------|-----------|----------|-----------|
| Main Level: | 594 sq/ft | Patio: | 295 sq/ft |
| Upper Level: | 593 sq/ft | Carport: | 181 sq/ft |
| Lower Level: | 543 sq/ft | | |
| Lower U/F: | 47 sq/ft | | |

TOTAL: 1,777 sq/ft



Layout by BC Floorplans. ** While all reasonable attempts have been made to ensure accuracy and the square footage and room dimensions are believed to be correct to ANSI Standards, due to the possibility of human error the information cannot be guaranteed. E60 Insured for \$1,000,000. Information should not be relied upon without independent verification.

