



ROSSETTI

201 1555 EASTERN AVENUE

CENTRAL LONSDALE, NORTH VANCOUVER



RARELY AVAILABLE PATIO SUITE AT 'THE SOVEREIGN'

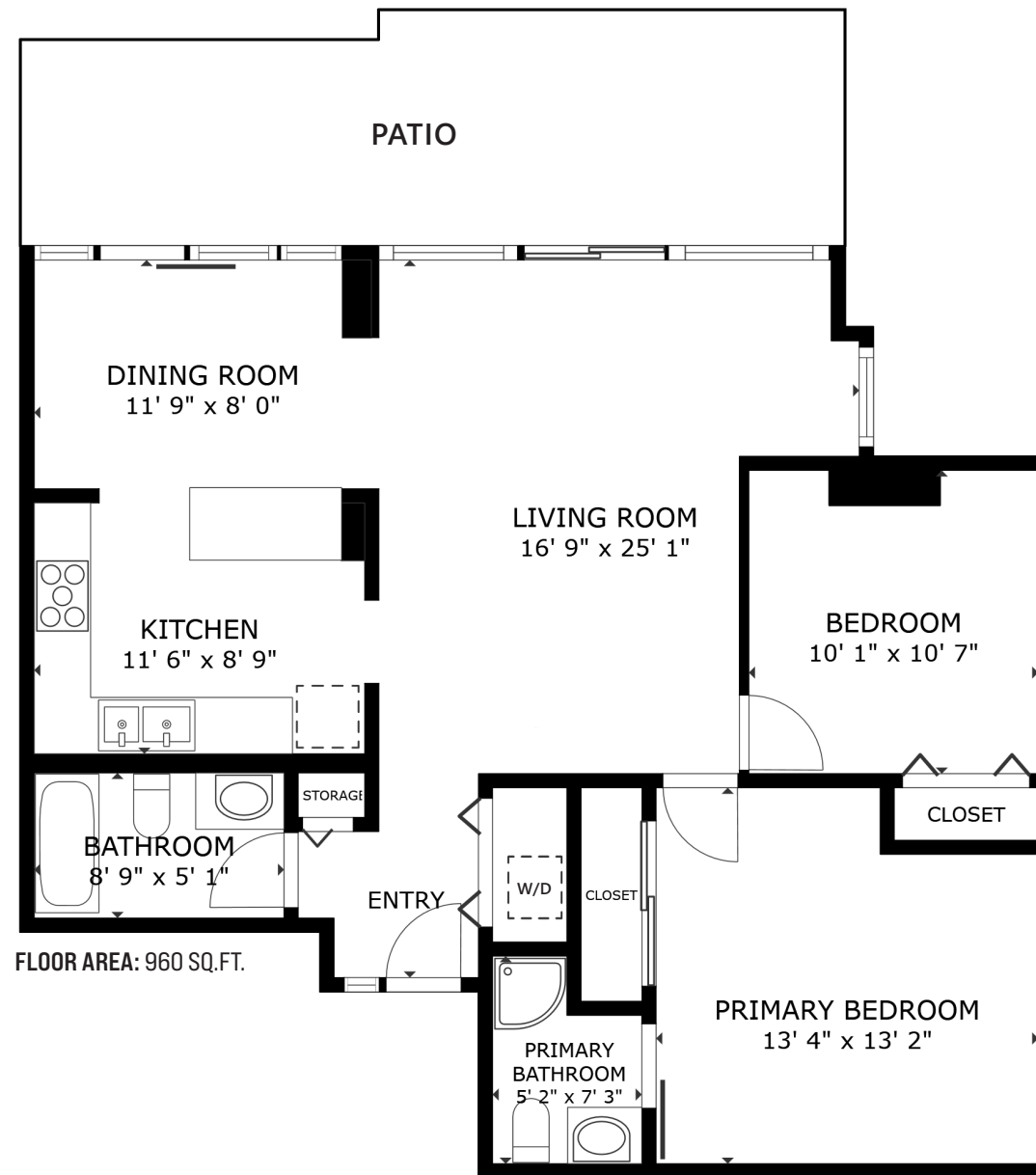
2 Beds | 2 Baths | 960 Sq/Ft

■ A rarely available patio suite at The Sovereign, located in the heart of Central Lonsdale. This bright and spacious northwest corner home offers 2 bedrooms, 2 bathrooms, and 960 sq ft of well-designed living space—plus an expansive 345 sq/ft private patio. The partially open-concept layout is enhanced by large windows and sliding doors that flood the interior with natural light and create seamless indoor/outdoor flow—perfect for summer lounging or entertaining. The patio offers the potential for a private urban oasis, with a planter running the width of the space, room for both a dining set and loungers, and even partial Grouse Mountain views. The interior has been thoughtfully updated throughout, including a modern kitchen with sleek white cabinetry, quartz countertops, timeless subway tile backsplash, and tile flooring. The adjacent dining room is ideally positioned for family dinners or hosting, with sliding doors leading directly to the patio. The generous sized living room includes a cozy nook—ideal for a home office or reading corner. The primary bedroom comfortably fits a king-sized bed with room for added wardrobes, and includes a large closet plus a tastefully updated 3-piece ensuite. The second bedroom is well-suited for family, guests, or as an additional office. An updated 4-piece bathroom and a large laundry closet with stacker washer/dryer and additional storage complete the home. Included are 1 secured parking space and a storage locker. The Sovereign is a well-regarded building in a prime walkable location—steps to City Market, across from an off-leash dog park, and just minutes to Whole Foods, the hospital, Library Square, and an array of shops and restaurants.



Listed at \$879,000





Interior square footage from strata plan. Layout and measurements from Matterport.
 Square footage, room measurements, & dimensions are approximate and not guaranteed.
 Information should not be relied upon without independent verification.
 This communication is not intended to cause or induce breach of an existing agency agreement.