



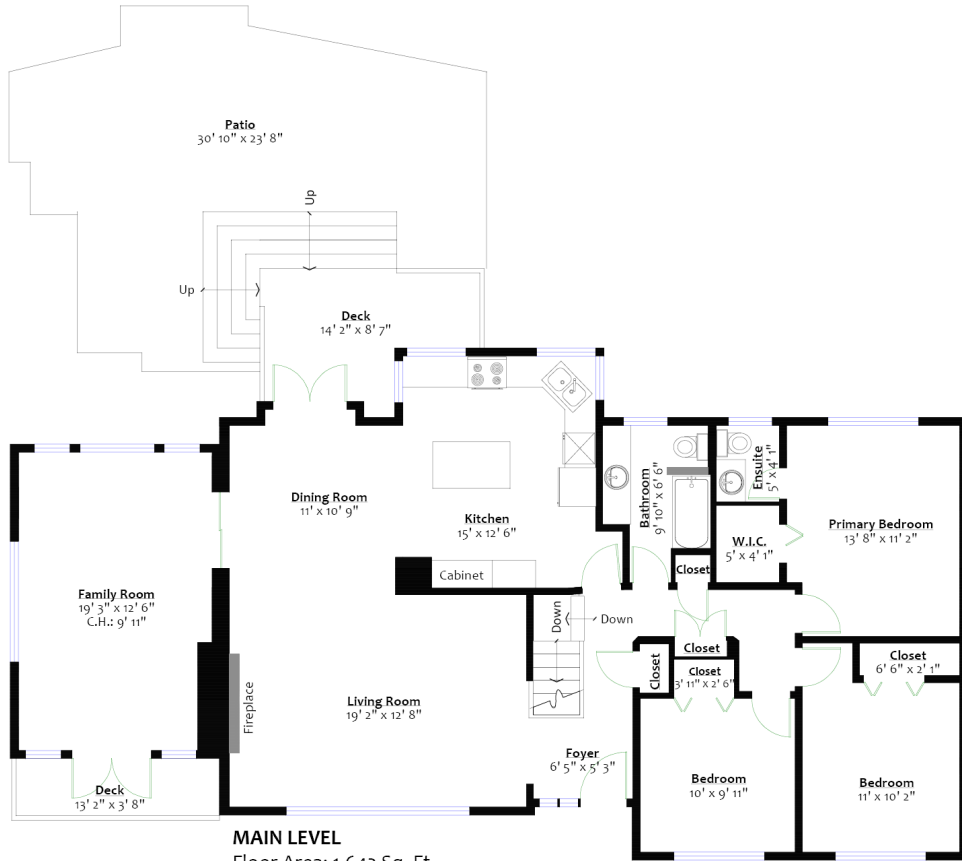
For more information
 Call 604 983 2518 or visit
RealEstateNorthShore.com

622 SILVERDALE PLACE

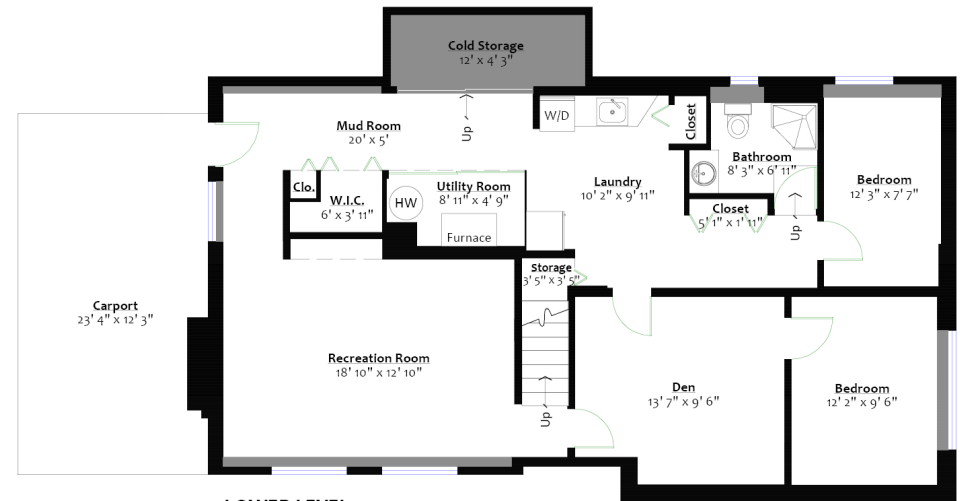
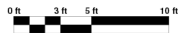
Upper Delbrook, North Vancouver

SQ/FT TOTALS

Main Level:	1,642 sq/ft	Deck:	174 sq/ft
Lower Level:	1,337 sq/ft	Patio:	441 sq/ft
TOTAL:	2,979 sq/ft	Fam Rm Deck:	48 sq/ft
		Carport:	286 sq/ft



MAIN LEVEL
 Floor Area: 1,642 Sq. Ft.
 Ceiling Height: 8'



LOWER LEVEL
 Floor Area: 1,337 Sq. Ft.
 Ceiling Height: 7'4"

Layout by BC Floorplans. E&O Insured for \$1,000,000
 While all reasonable attempts have been made to ensure accuracy and the square footage and room dimensions are believed to be correct to ANSI Standards, due to the possibility of human error the information cannot be guaranteed. Information should not be relied upon without independent verification.
 This communication is not intended to cause or induce breach of an existing agency agreement.