



For more information  
 Call 604 983 2518 or visit  
[RealEstateNorthShore.com](http://RealEstateNorthShore.com)

# 1811 RUFUS DRIVE

Westlynn, North Vancouver

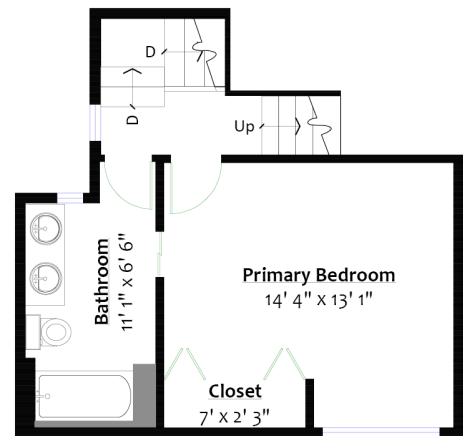
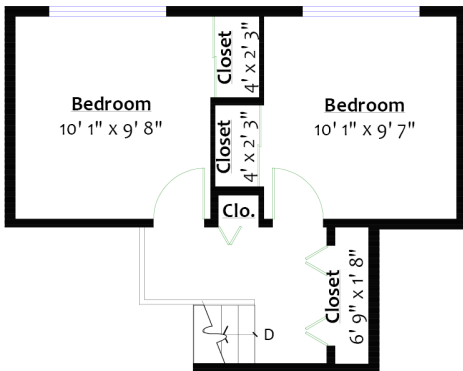
### SQ/FT TOTALS

Main Level:	633 sq/ft	Deck:	212 sq/ft
Upper Level:	372 sq/ft	Patio:	190 sq/ft
Top Level:	326 sq/ft		
Lower Level:	263 sq/ft		
TOTAL:	1,594 sq/ft		

Garage/Office: 366 sq/ft  
 GRAND TOTAL: 1,960 sq/ft

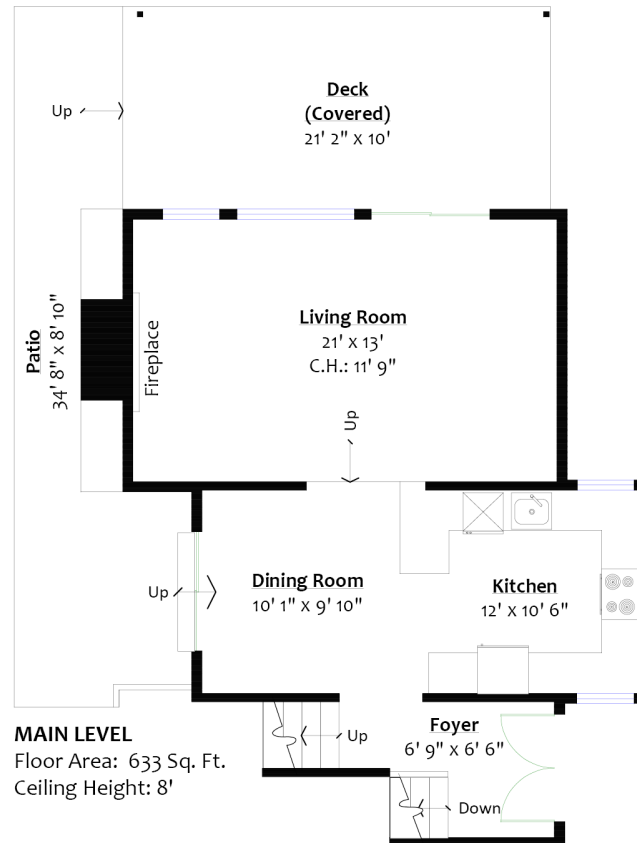
### TOP LEVEL

Floor Area: 326 Sq. Ft.  
 Ceiling Height: 8'



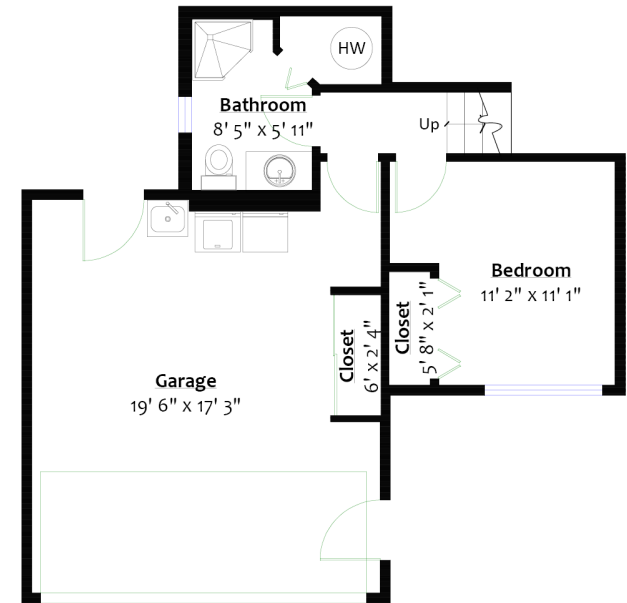
### UPPER LEVEL

Floor Area: 372 Sq. Ft.  
 Ceiling Height: 8'



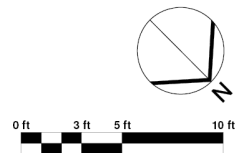
### MAIN LEVEL

Floor Area: 633 Sq. Ft.  
 Ceiling Height: 8'



### LOWER LEVEL

Floor Area: 236 Sq. Ft.  
 Ceiling Height: 8'



Layout by BC Floorplans. E&O Insured for \$1,000,000  
 While all reasonable attempts have been made to ensure accuracy and the square footage and room dimensions are believed to be correct to ANSI Standards, due to the possibility of human error the information cannot be guaranteed. Information should not be relied upon without independent verification.  
 This communication is not intended to cause or induce breach of an existing agency agreement.