



For more information
 Call 604 983 2518 or visit
RealEstateNorthShore.com

1254 WEST 22ND STREET

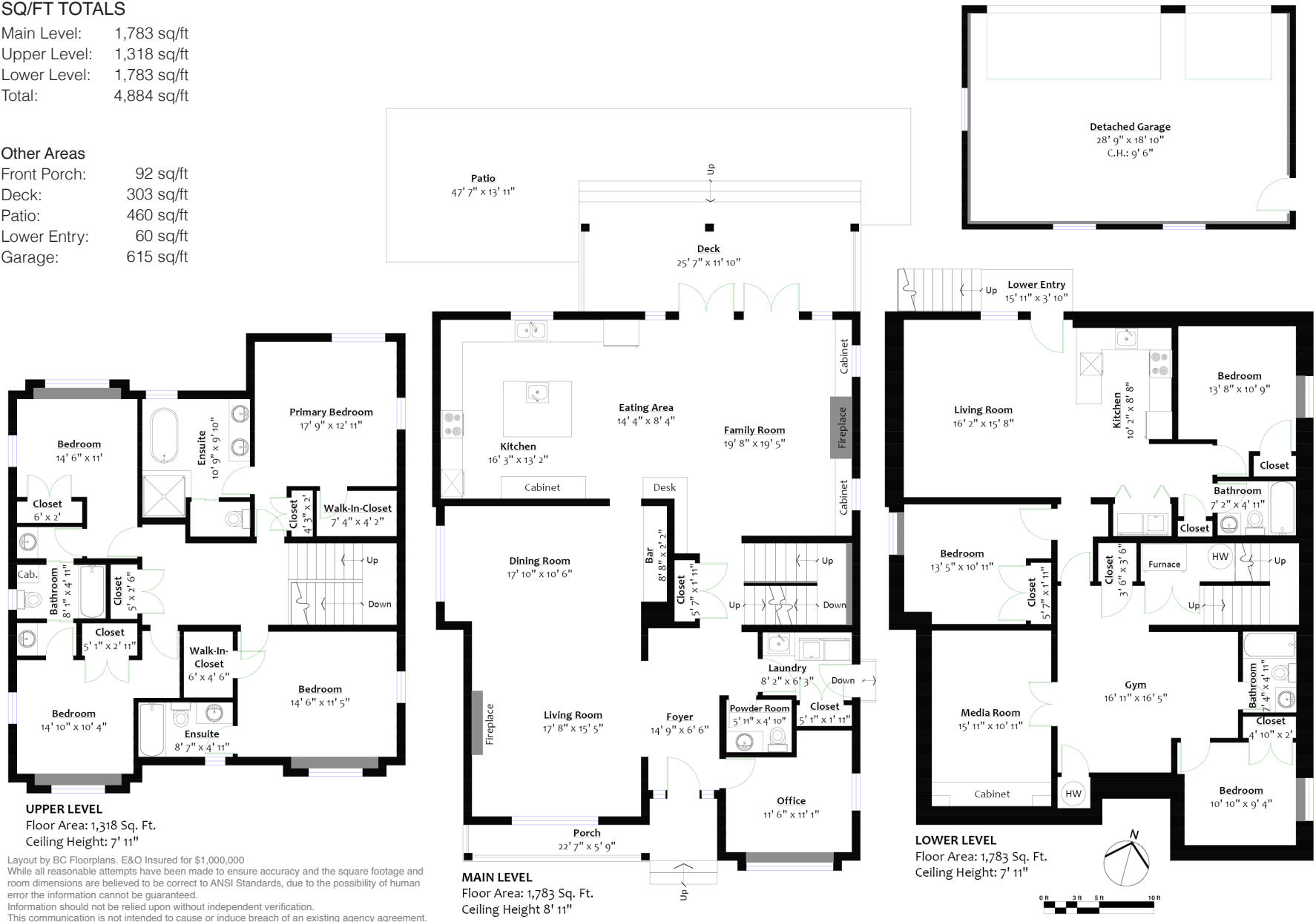
Pemberton Heights, North Vancouver

SQ/FT TOTALS

Main Level: 1,783 sq/ft
 Upper Level: 1,318 sq/ft
 Lower Level: 1,783 sq/ft
 Total: 4,884 sq/ft

Other Areas

Front Porch: 92 sq/ft
 Deck: 303 sq/ft
 Patio: 460 sq/ft
 Lower Entry: 60 sq/ft
 Garage: 615 sq/ft



Layout by BC Floorplans. E&O Insured for \$1,000,000
 While all reasonable attempts have been made to ensure accuracy and the square footage and room dimensions are believed to be correct to ANSI Standards, due to the possibility of human error the information cannot be guaranteed.
 Information should not be relied upon without independent verification.
 This communication is not intended to cause or induce breach of an existing agency agreement.

