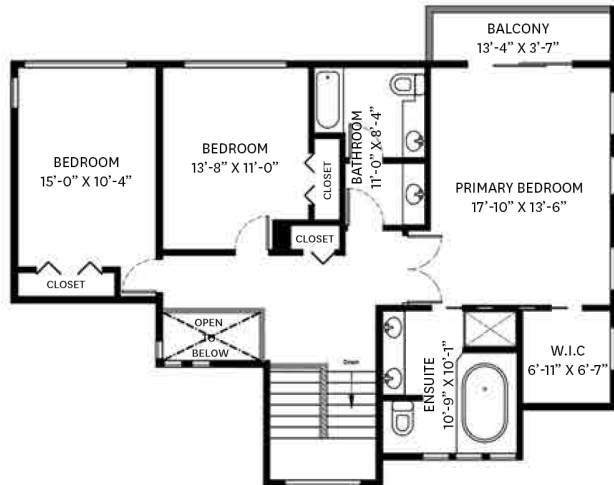




For more information
Call **604 983 2518** or visit
RealEstateNorthShore.com

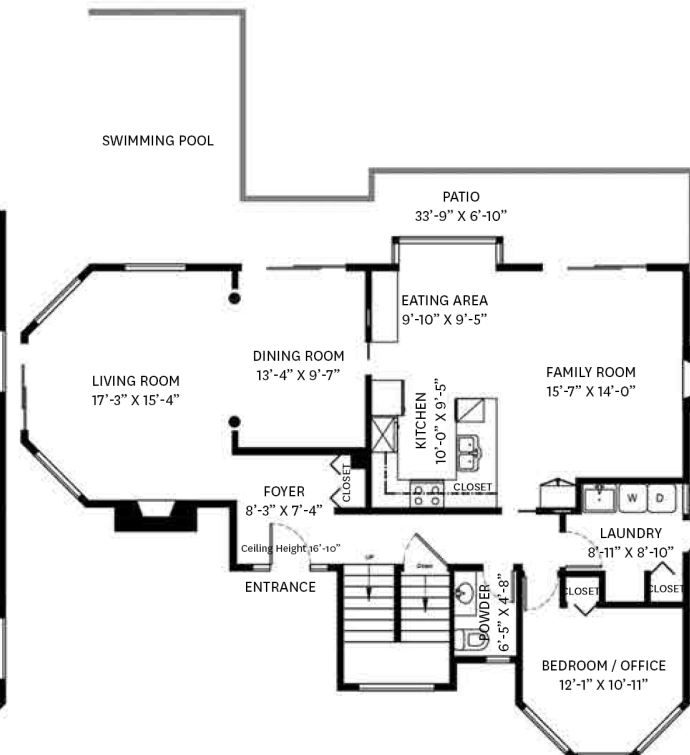
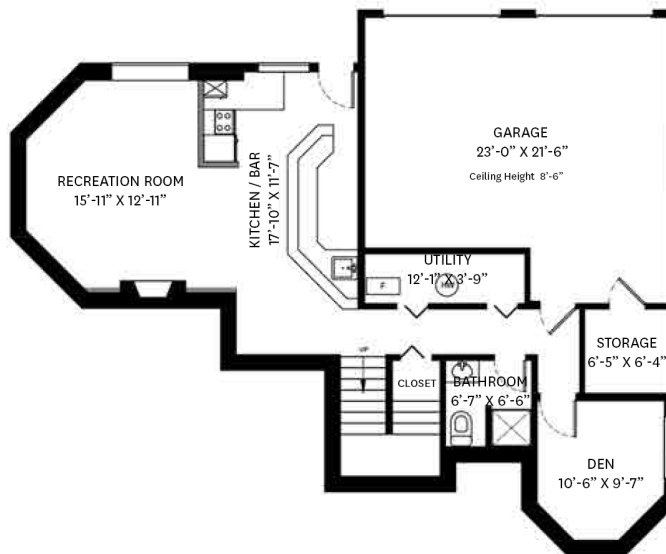
111 SANDRINGHAM CRESCENT

Upper Lonsdale, North Vancouver



SQ/FT TOTALS

Main Floor:	1,356 sq/ft	Garage:	470 sq/ft
Upper Floor:	1,173 sq/ft	Balcony:	48 sq/ft
Lower Floor:	958 sq/ft	Deck:	195 sq/ft
TOTAL:	3,487 sq/ft		



Floor plan by ishot Enterprises Inc.
This floor plan illustration is for references only as it is not produced by a certified architect. Measurements are approximate and may not be to scale. To be used for marketing materials only; not for assessment and/or appraisal.
Information should not be relied upon without independent verification.
This communication is not intended to cause or induce breach of an existing agency agreement.