



For more info
 Call 604 983 2518 or visit
RealEstateNorthShore.com

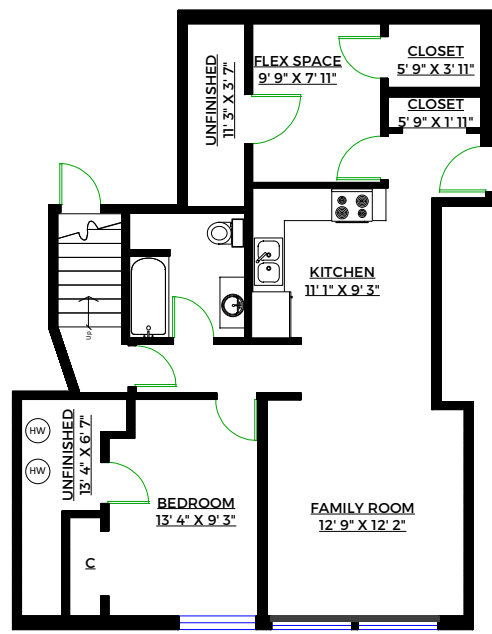
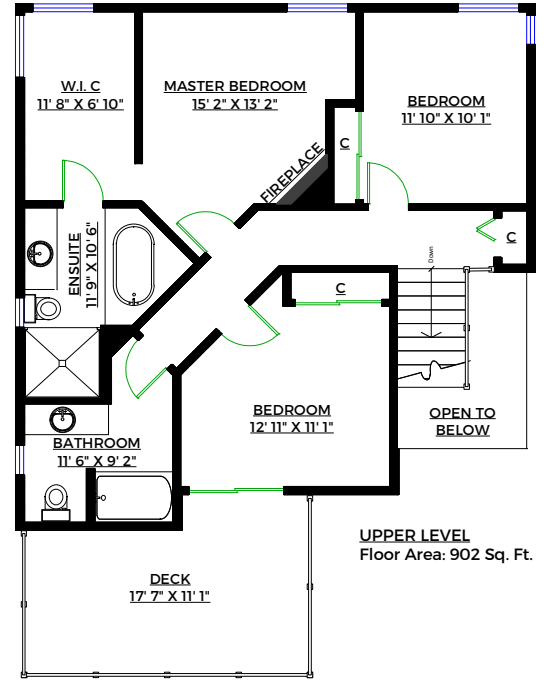
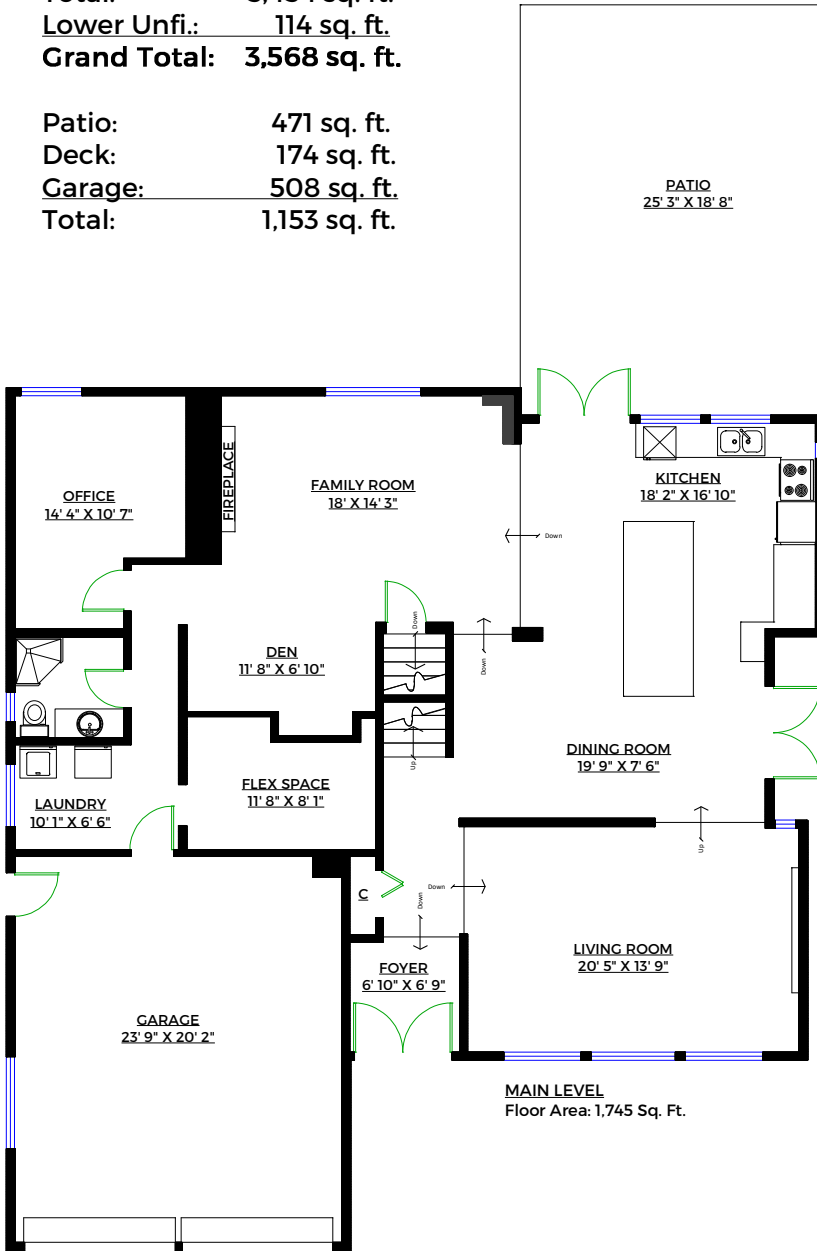
2400 WEYMOUTH PLACE

Lynn Valley, North Vancouver

Totals**

Main Level: 1,745 sq. ft.
 Upper Level: 902 sq. ft.
 Lower Level: 807 sq. ft.
 Total: 3,454 sq. ft.
 Lower Unfi.: 114 sq. ft.
 Grand Total: 3,568 sq. ft.

Patio: 471 sq. ft.
 Deck: 174 sq. ft.
 Garage: 508 sq. ft.
 Total: 1,153 sq. ft.



** Approx. based on interior measurements to exterior walls
 ** Total square footage not taken from original blueprints
 ** Includes unfinished areas