



For more information
 Call **604 983 2518** or visit
RealEstateNorthShore.com

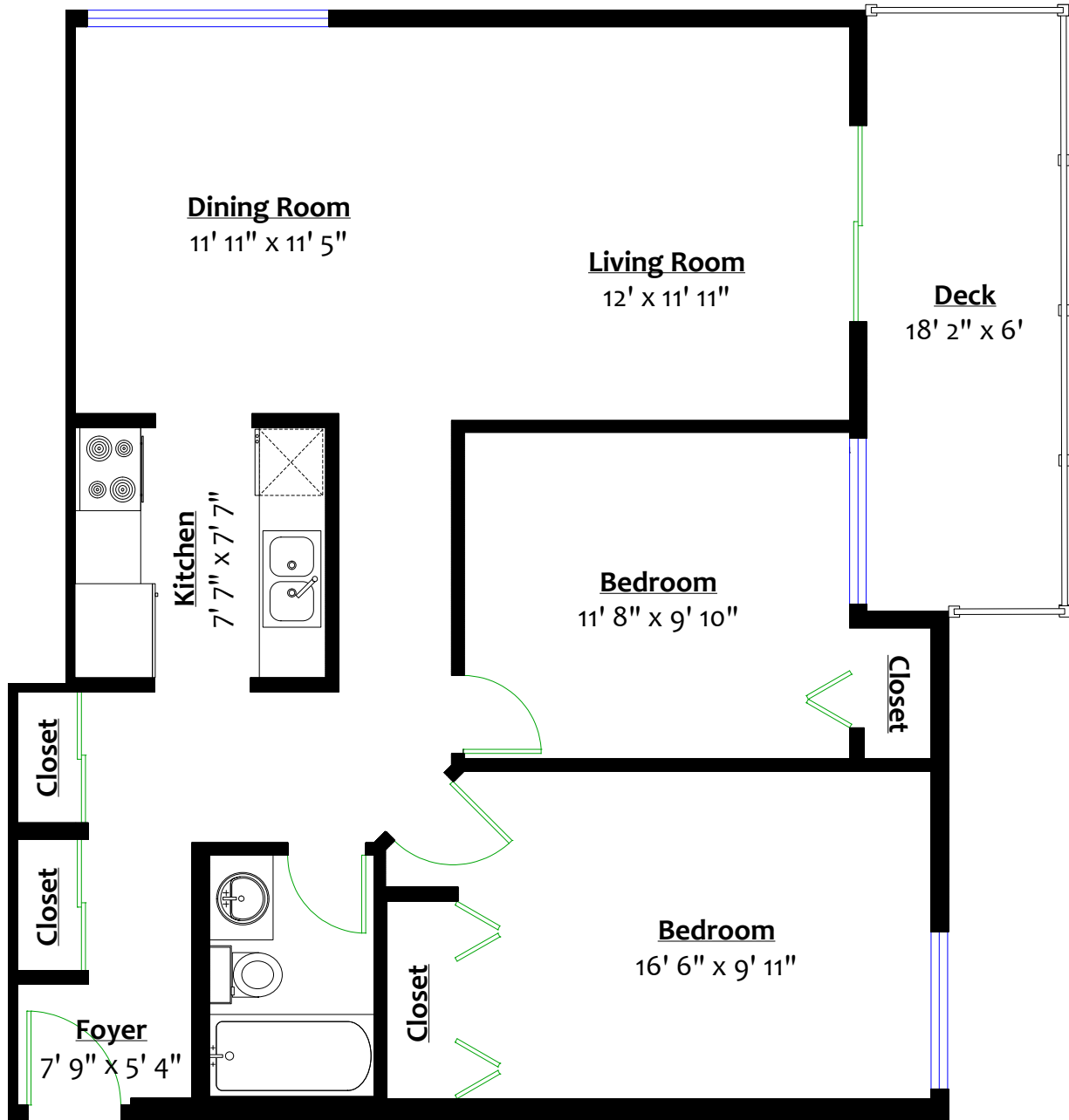
102-156 WEST 21ST STREET

Central Lonsdale, North Vancouver

MEASUREMENTS*

Main: 871 sq/ft

Deck: 108 sq/ft



MAIN LEVEL

Floor Area: 871 Sq. Ft.



** Approx. based on interior measurements to exterior walls
 ** Total square footage not taken from original blueprints