

TH-5

4 BED, 4 BATH

1,880 sq.ft.

OR

3 BED, 3 BATH

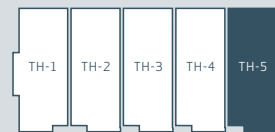
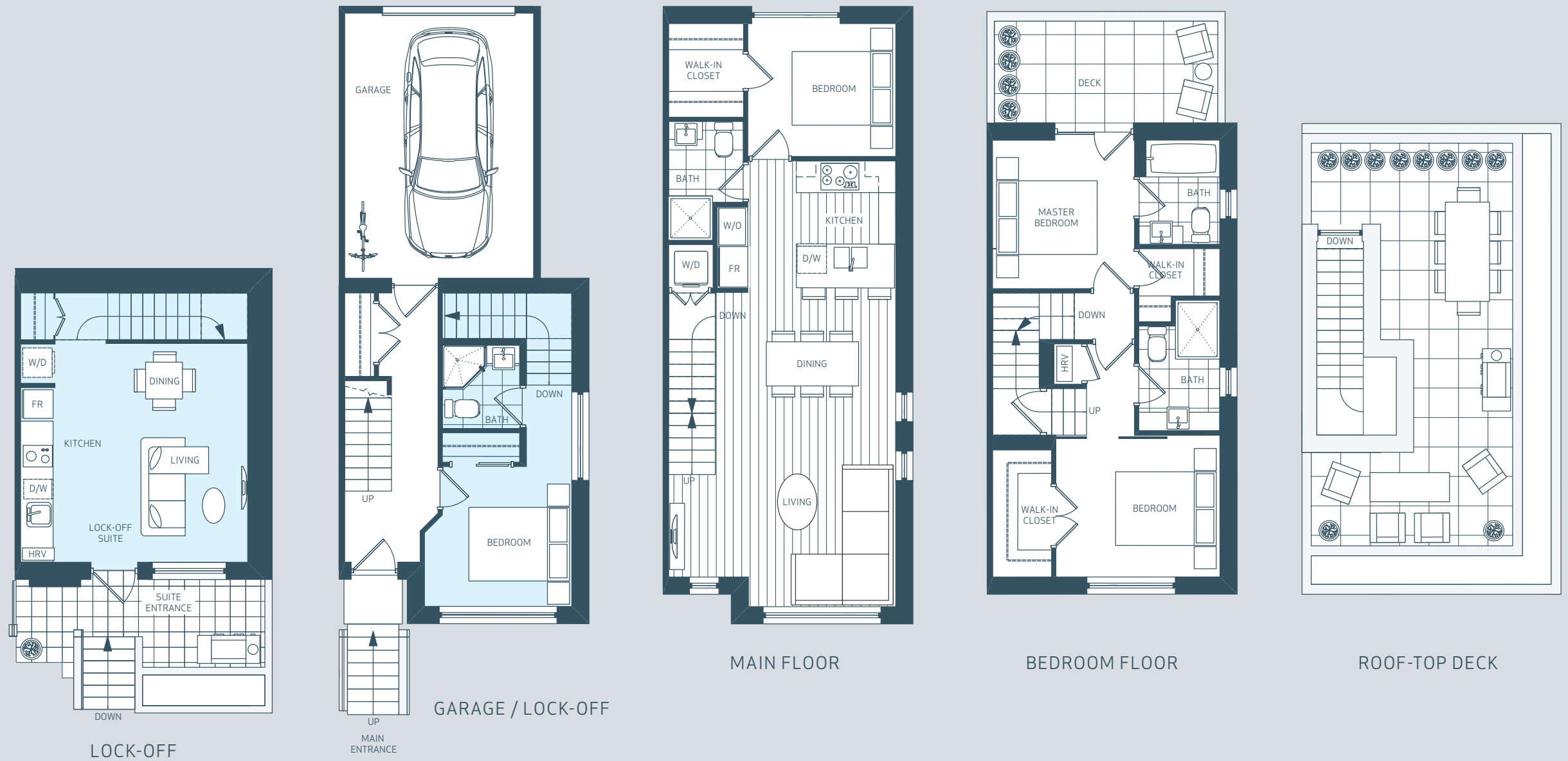
1,326 sq.ft.

+LOCK-OFF SUITE

554 sq.ft.

ROOF DECK

267 sq.ft.



3rd St E

Ridgeway Ave

The corner 4-bedroom townhome invites more light into the home. With an expansive rooftop deck and a large private deck off the master bedroom, the home encourages your family to spend time outside. Comfort and flexibility are key with a main floor bedroom ideal for a guest suite or sizable den, while the 1-bedroom lock-off suite will contribute to your mortgage.