



CROWN AND
MOUNTAIN

PREVIEW PACKAGE



OVERVIEW

DISCOVER WHAT LYNN CREEK HAS TO OFFER

North Vancouver. Two words that evoke vivid thoughts of the ever-present salient mountains, hiking rain forest trails, kayaking in Deep Cove, lunch at Lonsdale Quay or shopping at Park and Tilford. In the emerging neighbourhood of Lynn Creek you will find 1, 2 and 3 bedroom residences inspired by the North Vancouver lifestyle. Each home mindfully designed, every space thoughtfully considered. Crafted by North Shore based Mountain Creations to perfectly capture the essence of North Vancouver spirit and everlasting quality.



LYNN CREEK LIVING

- West Coast Contemporary 6-storey wood frame building with expansive glass and stone work designed by Salehi Architect
- Interiors by Eliza Sukava of Sukava Associates Interior Design
- Wide plank laminate floor throughout all living areas
- Whirlpool® front load Washer / Dryer
- Wired for high-speed internet access
- Faux wood blinds
- Outdoor living is a breeze with large decks, and ground-floor homes offering direct entry from the street through a fenced yard and patio.
- Walking distance to shops, restaurants, cinemas, services and amenities
- Steps to Seylynn Park and Bridgeman Park
- Close to major transit routes such as the Phibbs Exchange and connections to the SeaBus and Canada Line
- Contemporary recessed pot lights illuminate your home
- Fully-equipped bike repair station
- Multi-purpose amenity room on ground floor with kitchenette, private washroom and adjacent patio for entertaining
- Ground-level, enclosed children's play area for those days that you don't want to trek to the local parks.

KITCHENS

- Contemporary white flat-panel soft-close cabinets accented with black hardware offer timeless appeal
- Quartz countertops and full-height hexagonal white ceramic tile backsplash

- High-performance stainless steel appliances includes:
 - Whirlpool® Dishwasher with AccuSense® Soil Sensor with 1-Hour Wash cycle to clean dishes quickly
 - KitchenAid® 19 cu.ft. full-depth, bottom mount refrigerator (most units)
 - Family-sized Panasonic microwave with cyclonic inverter technology
 - Whirlpool® 30" gas range with 5 burner cook-top, convection oven and AquaLift® Steam Clean
 - Broan stainless steel, ultra-quiet 450 CFM under cabinet hood fan
- Double-basin undermount stainless steel sink and matte black Delta single-lever faucet with retractable spout (Jr. 1 Beds have single basin)
- Under cabinet LED lights provide energy efficient task lighting
- Kitchen island expands your work space and becomes a family gathering place (some homes)

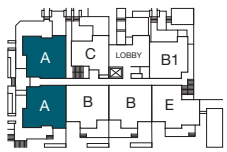
BATHROOMS

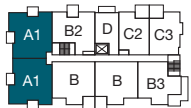
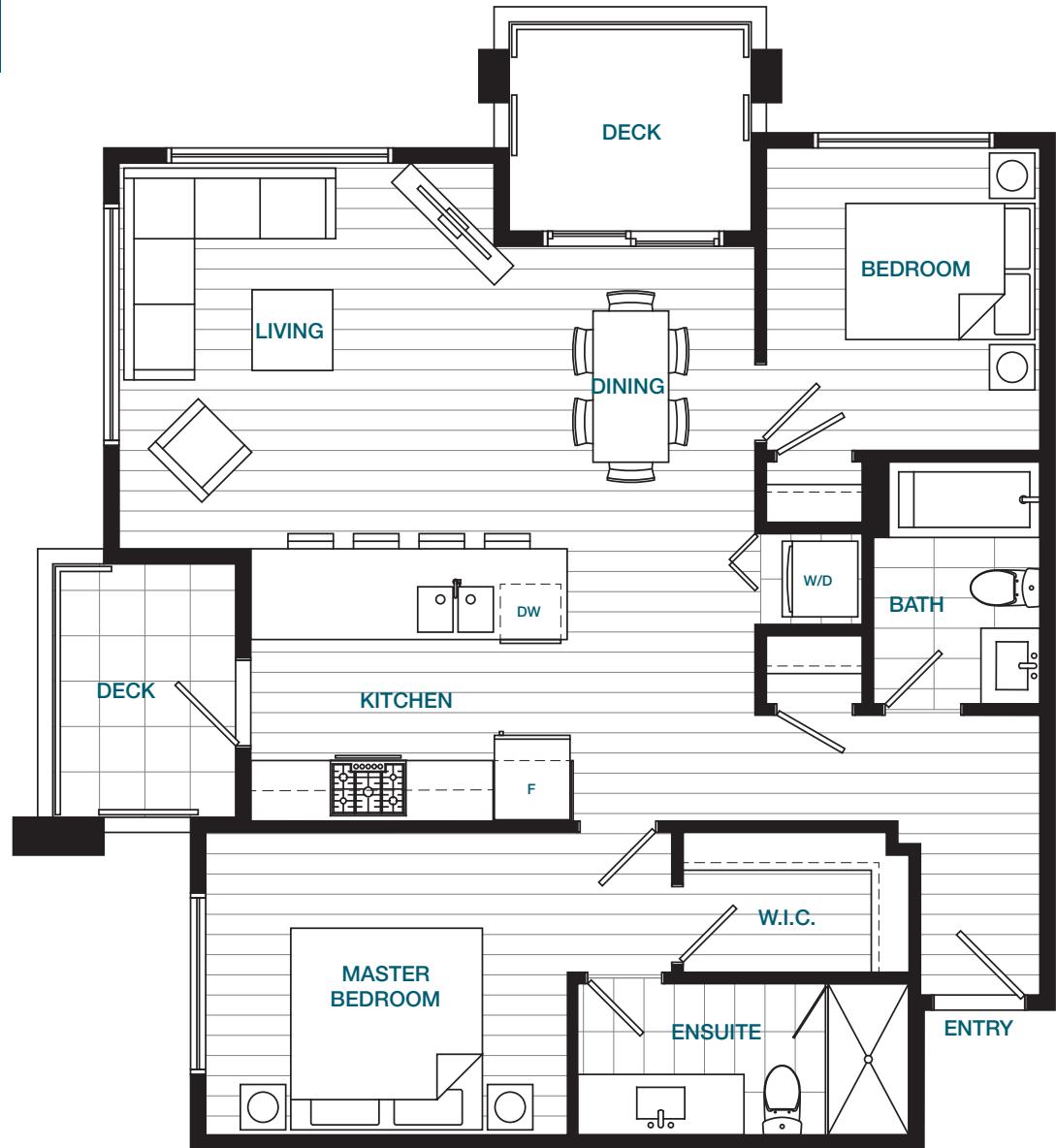
- Wood-grain, flat-panel, square-line profile cabinetry features black pulls and soft-closing hardware
- Quartz countertops with soft square edge profile
- 12" x 24" porcelain tile floors
- Grohe single-lever chrome bath and shower fixtures
- Under-mount square sink
- Luxurious ensuites offer a soaker tub and separate frameless glass shower (most homes), and beautifully crafted vanity lighting

- Main baths have combination tub / shower with a hand-held wand
- Water-conserving, dual-flush water closet feature soft-closing lids

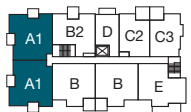
TECHNOLOGY, WARRANTY AND SECURITY

- Built Green, High Density Gold (equivalent)
- Hardwired smoke and CO2 detectors and fire sprinklers in all homes and common areas
- Secured keyless lobby entry phone system
- Gated and well-lit underground parking with security cameras gives you added safety and security
- Each suite entry comes with a heavy deadbolt lock and door viewer
- Ground floor homes feature pre-wiring for alarm systems
- Large private gear lockers to store your outdoor toys and seasonal items
- Double-glazed, Low-E windows enhance insulation and UV protection while also offering reduced sound transfer
- Electric Vehicle Charging stations available in the parkade
- Comprehensive 2-5-10 homeowners warranty backed by National Home Warranty covers: Materials and labour (2 years), Building envelope (5 years), and Structural components (10 years)

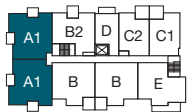




LEVEL 4 & 5



LEVEL 3



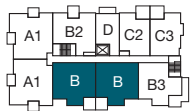
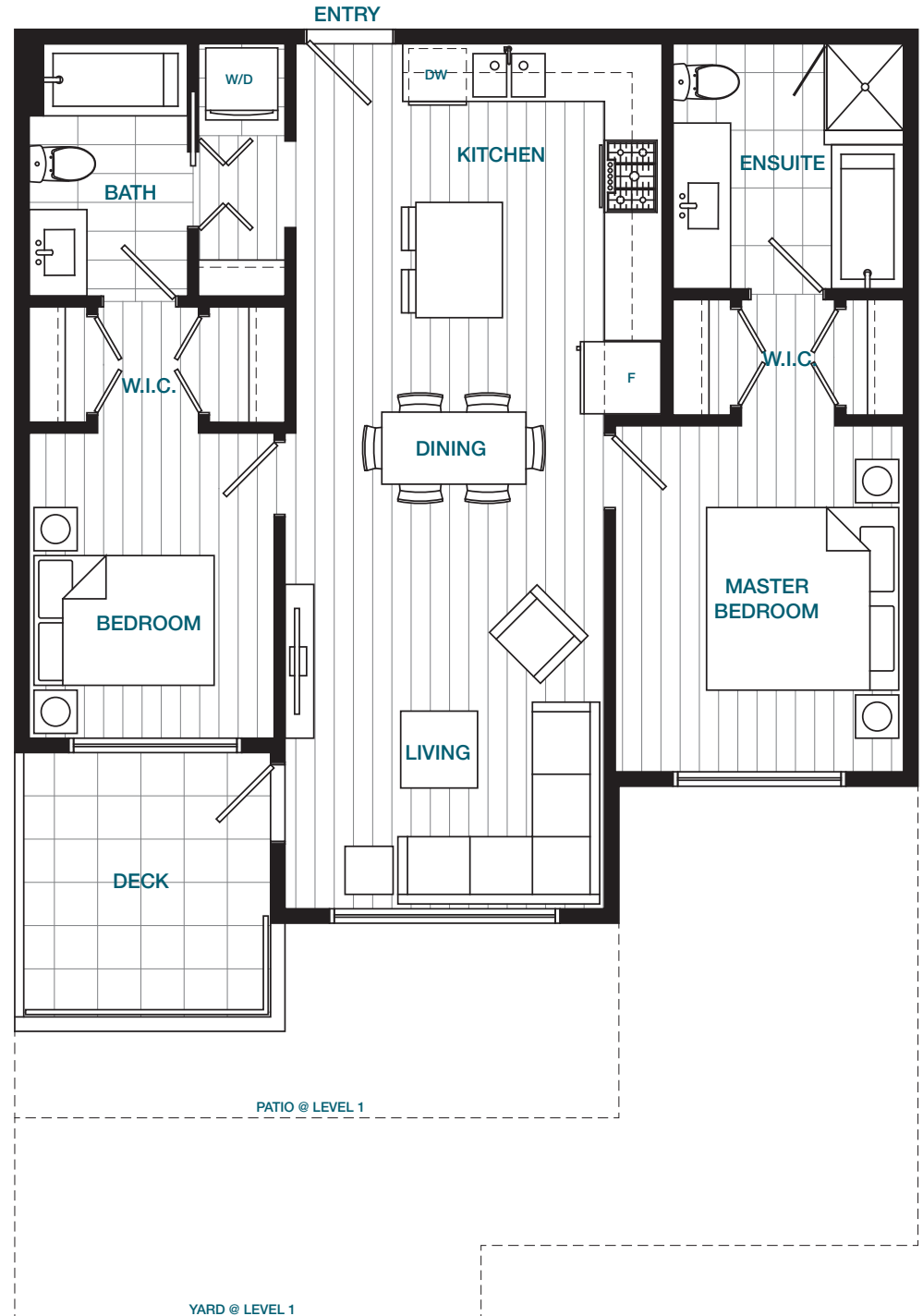
LEVEL 2



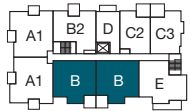


PLAN B

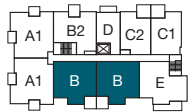
TWO BEDROOM, TWO BATH
853 SQ FT



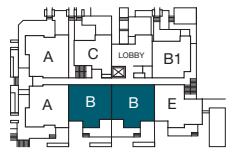
LEVEL 4 & 5



LEVEL 3



LEVEL 2



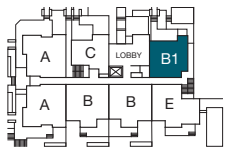
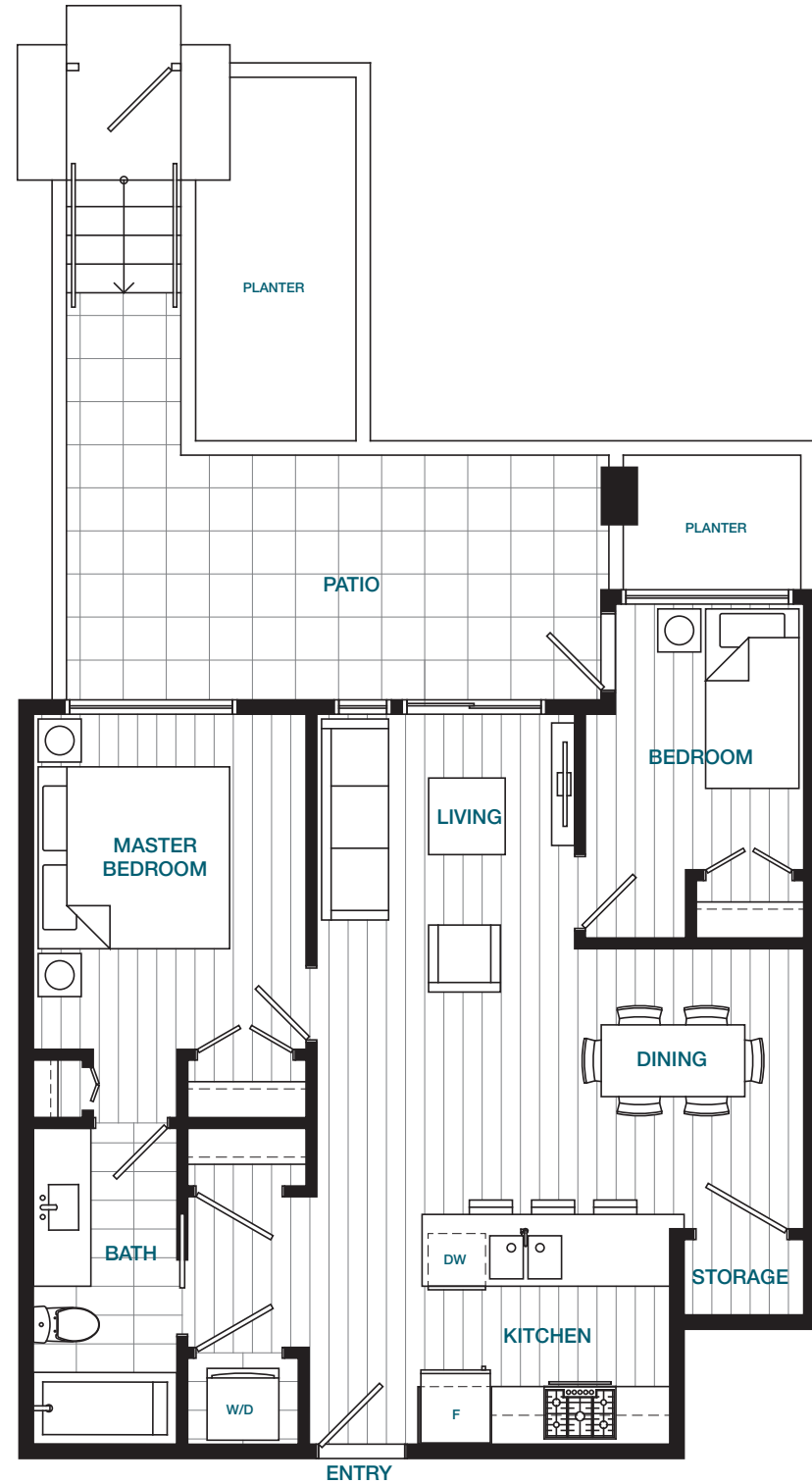
LEVEL 1





PLAN B1

JR. TWO BEDROOM, ONE BATH
727 SQ FT



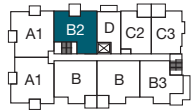
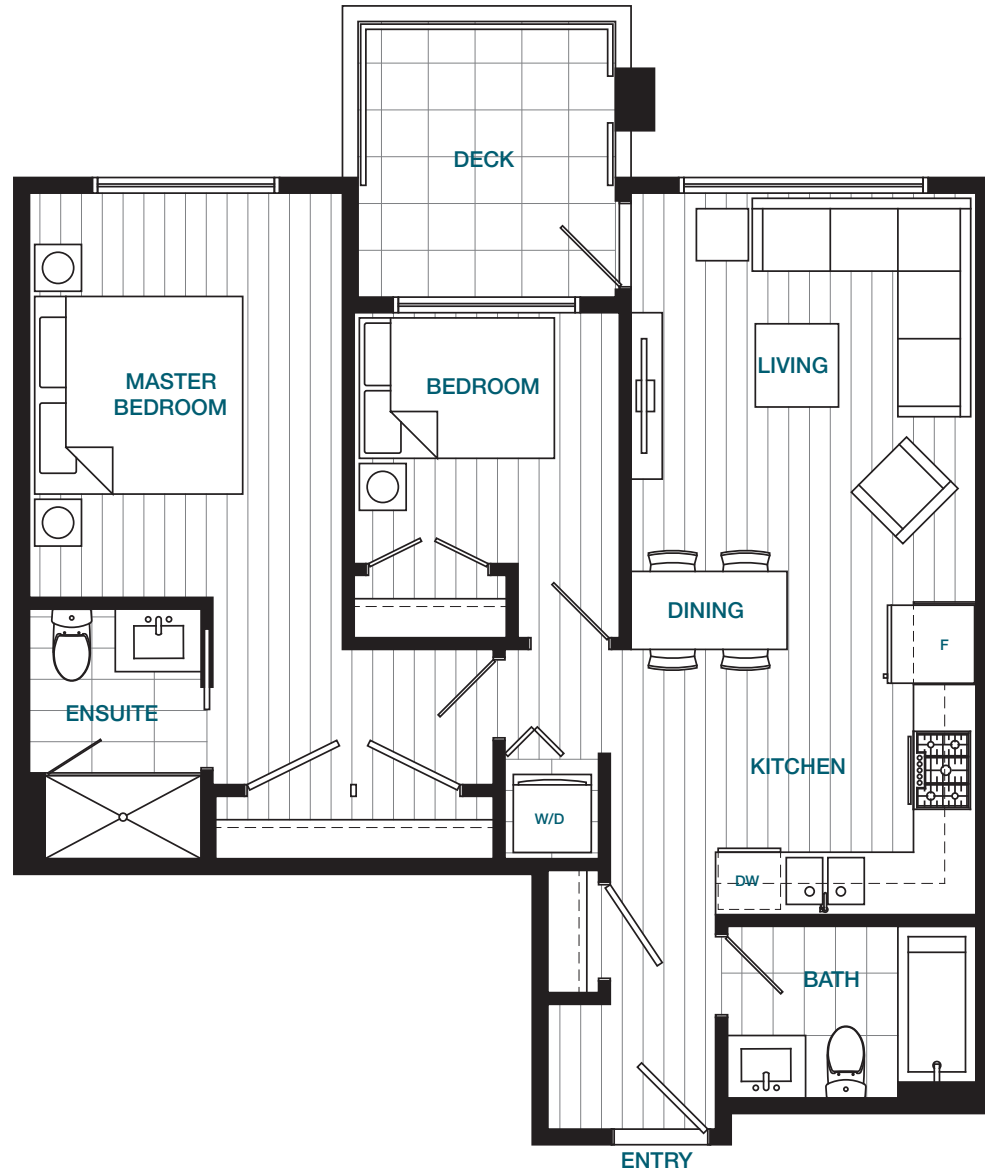
LEVEL 1



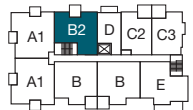


PLAN B2

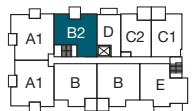
TWO BEDROOM, TWO BATH
771 SQ FT



LEVEL 4 & 5

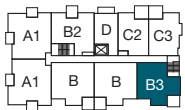


LEVEL 3

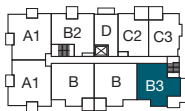


LEVEL 2



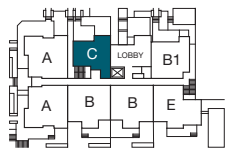


LEVEL 5

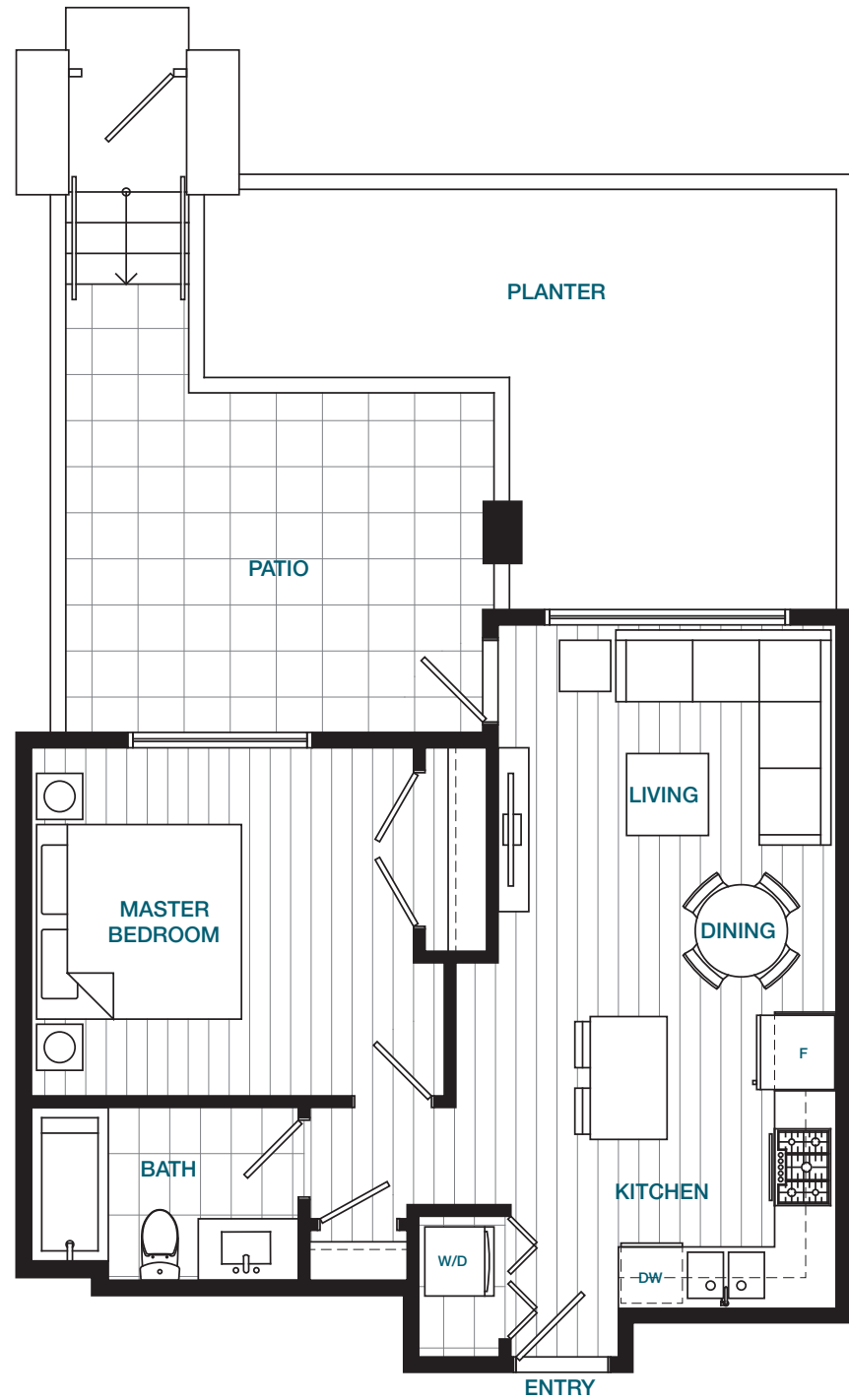


LEVEL 4





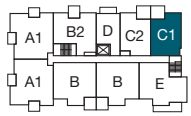
LEVEL 1



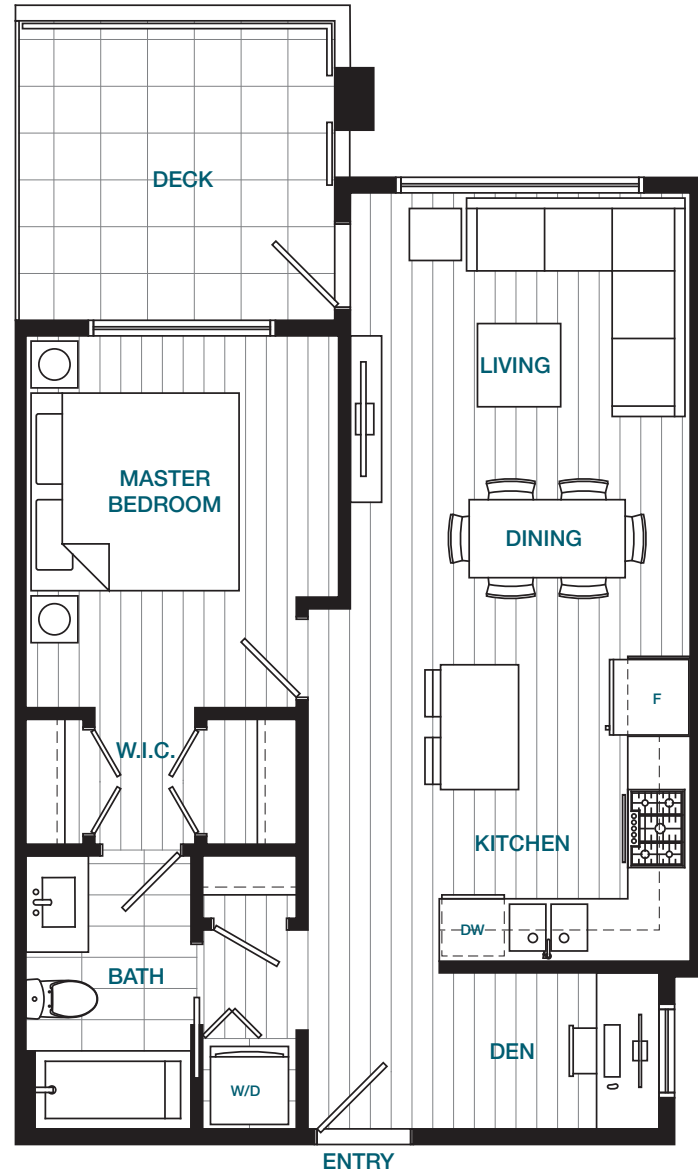


PLAN C1

ONE BEDROOM + DEN, ONE BATH
629 SQ FT



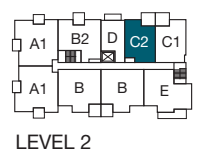
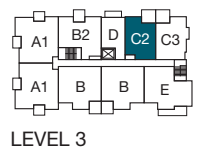
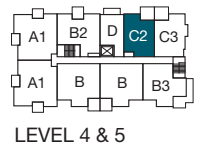
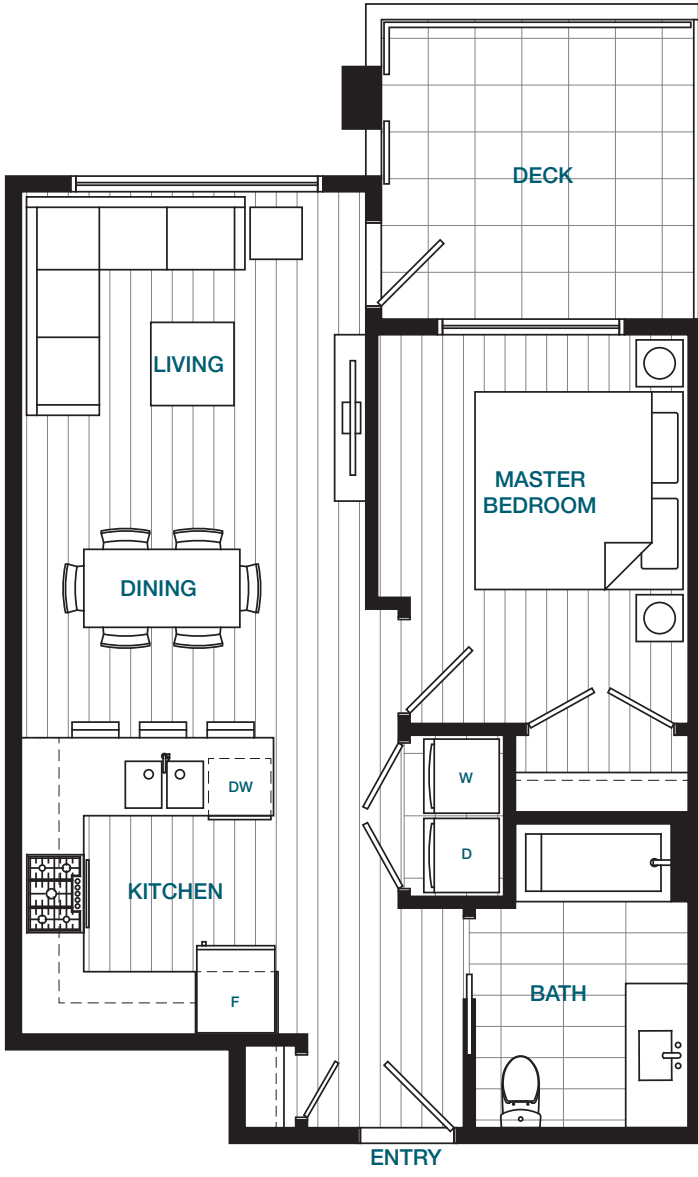
LEVEL 2





PLAN C2

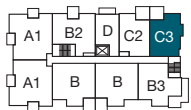
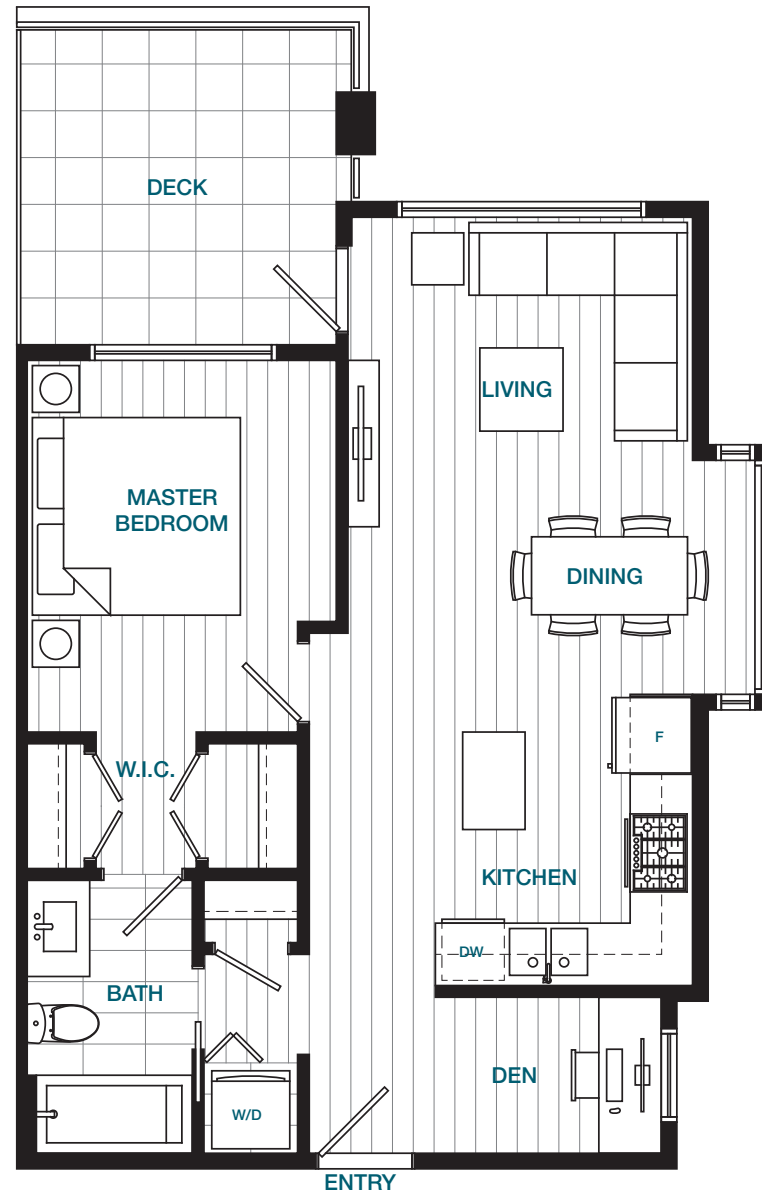
ONE BEDROOM, ONE BATH
610 SQ FT



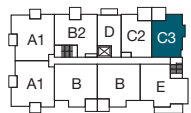


PLAN C3

ONE BEDROOM + DEN, ONE BATH
646 SQ FT

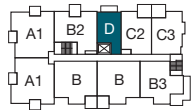
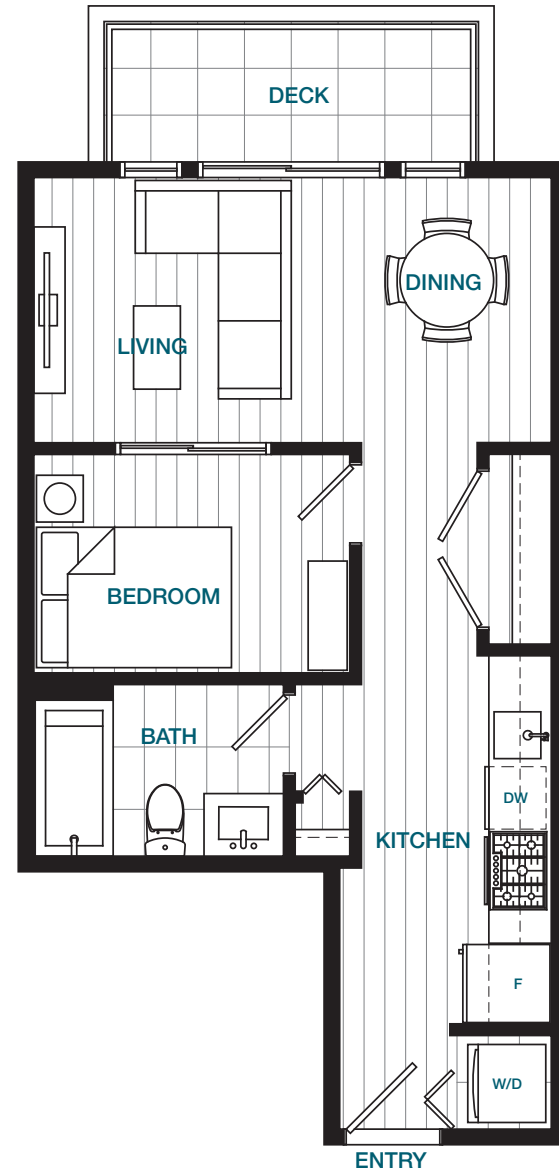


LEVEL 4 & 5

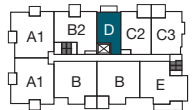


LEVEL 3

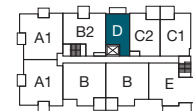




LEVEL 4 & 5



LEVEL 3



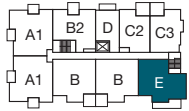
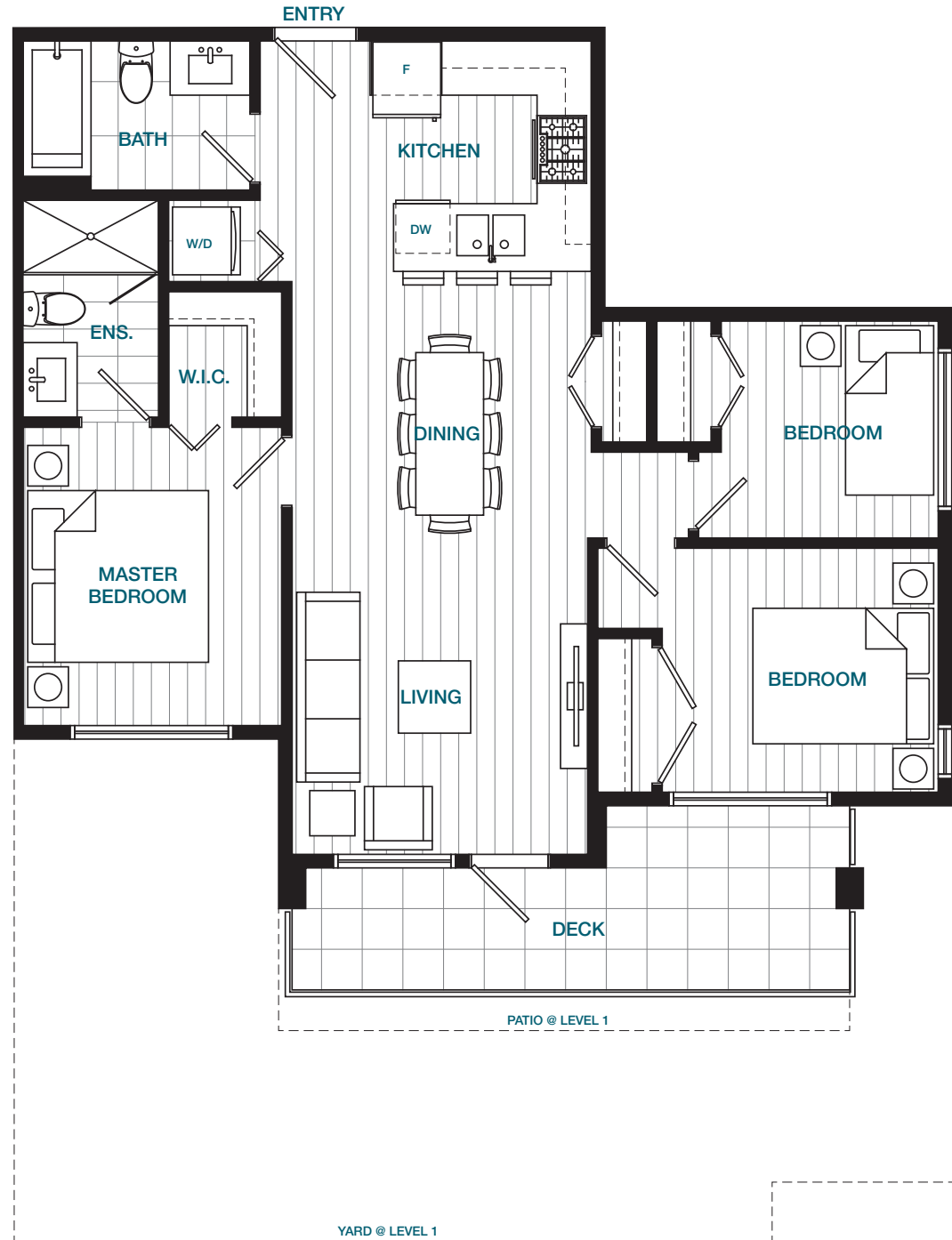
LEVEL 2



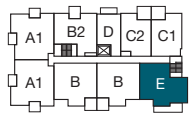


PLAN E

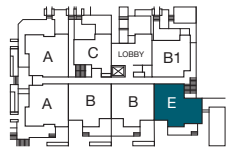
JR. THREE BEDROOM, TWO BATH
868 SQ FT



LEVEL 3



LEVEL 2



LEVEL 1





CROWN AND MOUNTAIN

mountaincreations.ca/crown

In our continuing effort to improve and maintain the high standard of the Crown & Mountain development, the developer reserves the right to modify or change plans, specifications, features and prices without notice. Materials may be substituted with equivalent or better at the developer's sole discretion. All dimensions and areas are approximate and are based on Architectural measurements. As reverse and/or mirrored plans occur throughout the development phases please see latest set of architectural plans for current layout if material to your decision to purchase. Illustrations and renderings are an artist's conception and are intended as a general reference only. This is not an offering for sale. E. & O.E.



MOUNTAIN
CREATIONS



FIFTH AVE