



**401-2059 CHESTERFIELD AVE**

**NORTH VANCOUVER**



# TOP FLOOR CORNER UNIT AT 'RIDGE PARK GARDENS'

2 Beds | 2 Baths | 1,073 Sq/ft

■ Quiet, 2 bedroom, 2 bathroom suite at the well maintained, adult oriented (55+) Ridge Park Gardens. One owner top floor corner unit in the buildings best location, with three exterior walls facing east, south and west with an abundance of windows and only one common wall. Features vaulted ceilings in the living room (with gas fireplace), kitchen with a window over the sink, and easy access to an intimate deck with serene outlook to creekside treed privacy. Includes a master with ensuite and two closets, and good separation from second bedroom ideal for guests with adjacent second bathroom. Building upgrades include rainscreen, roof, plumbing, boiler, balconies, and windows. Features radiant in-floor heat, in-suite laundry, separate storage locker, and 1 secured parking stall. Offering a workshop, guest suite, visitor parking, and a fully equipped amenity room with a kitchen, pool table, piano, a large patio overlooking the beautiful landscaped garden and greenhouse. Convenient Central Lonsdale location close to transit, shopping, restaurants, and parks.

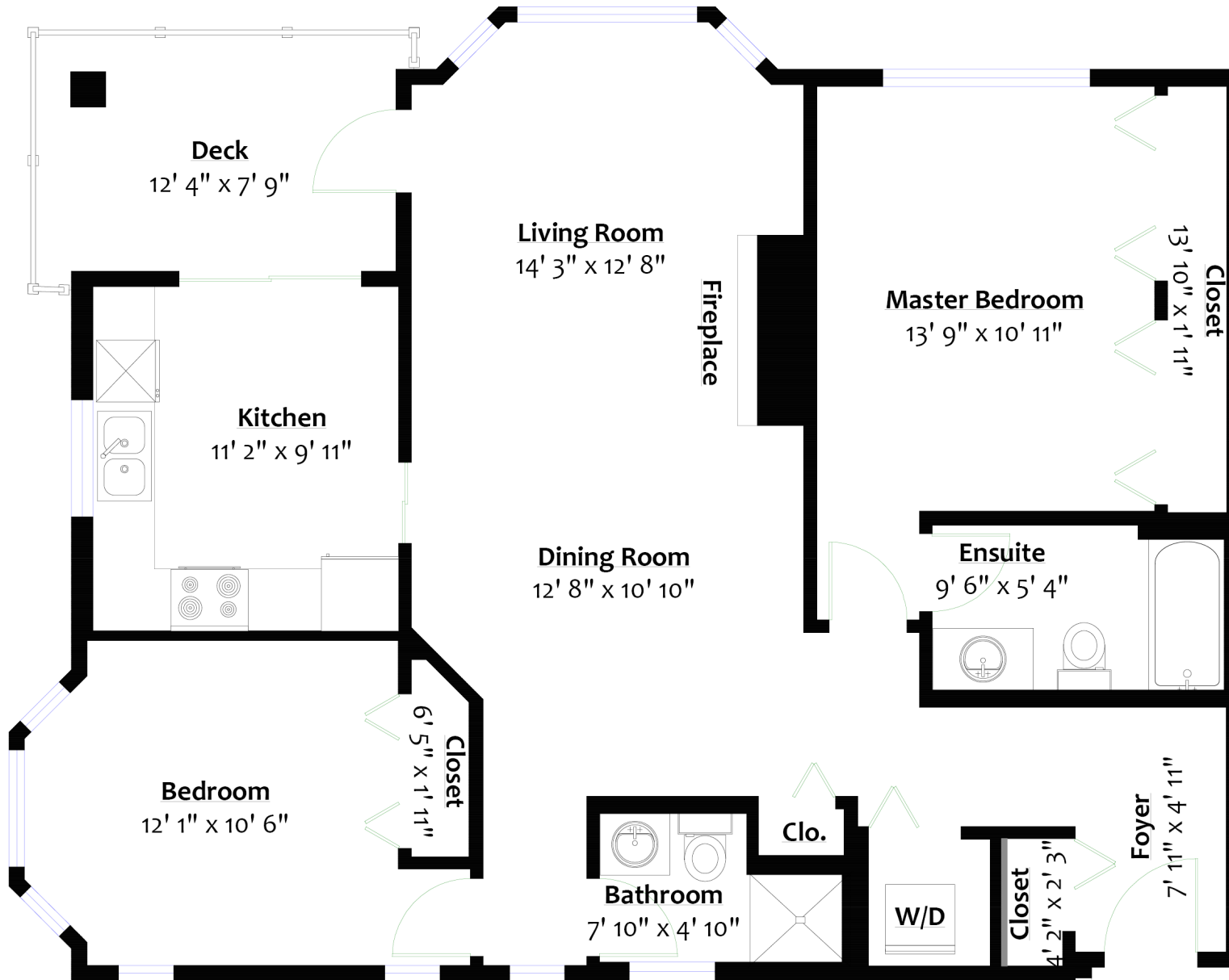
**Listed at \$689,000**











**MAIN LEVEL**

Floor Area: 1,073 Sq. Ft.



Sq/ft & room measurements are approx. based on interior measurements to exterior walls by BC Floorplans. Information should not be relied upon without independent verification. This communication is not intended to cause or induce breach of an existing agency agreement.

For more information  
Call **604 983 2518** or visit  
[RealEstateNorthShore.com](http://RealEstateNorthShore.com)