



JUNIPER

TIMBER COURT

FEATURES

DRAFT

YOUR LYNN VALLEY HOME

- Designed by award-winning Raymond Letkeman Architects Inc., Juniper at Timber Court features modern West Coast architecture distinguished by pitched roofs and prominent wood beams
- Find thoughtful pedestrian pathways throughout the community and a focal water feature on 27th Street
- The inviting lobby is filled with natural sunlight and features timber-supported canopies, a welcoming lounge with a fireplace and imported stone flooring
- Most ground-level homes offer direct entry from the street through a private fenced yard
- Enjoy the convenience of a fully-equipped fitness studio and social lounge exclusive to Timber Court residents

DISTINGUISHED INTERIORS

- Welcoming you home is a contemporary, flat-panel, stained wood entry door with polished chrome hardware
- Hydronic (water-based) in-floor radiant heating system keeps you comfortable
- Rich laminate flooring sets the tone for tasteful design throughout
- Airy nine-foot ceilings in living and dining areas create a spacious, open interior
- Choose from two designer-selected colour schemes: Dark or Light
- Plush nylon carpeting in bedrooms puts durable style at your feet
- Horizontal blinds on all windows give privacy from the outside while being attractive from the inside
- Low E, double glazed, thermally broken, vinyl windows improve energy efficiency and ensure ideal indoor temperatures year round
- Enjoy outdoor living with a large deck or spacious patio, and yards for most ground floor homes

SPA-INSPIRED BATHROOMS

- Imported, designer-selected porcelain tile flooring creates a sophisticated look
- Flat-panel, square-line profile cabinetry features polished chrome pulls and soft-closing hardware
- Custom cabinetry in your choice of stained wood veneer or glossy white

- Ensuites offer a luxurious oversized shower with frameless shower doors and rainshower head with wand, built-in toiletries niche (some homes) and integrated bench seating (most homes)
- Attractive and durable quartz countertops accented by Grohe faucets
- Prepare for your day in style with a contemporary vanity mirror and lighting
- Water-conserving, dual-flush water closets feature soft-closing lids

GOURMET KITCHENS

- Premium flat-panel cabinetry in stained wood veneer or glossy white is accented with polished chrome pulls and soft-closing hardware
- Elegant, polished quartz countertops with a handset marble backsplash
- A kitchen island expands your work space and becomes a family gathering place (some homes)
- Sleek, stainless steel appliances by KitchenAid and Fisher & Paykel coordinate beautifully:
 - Energy Star qualified dishwasher fully integrated with custom cabinetry
 - 17 cu.ft. counter-depth french door refrigerator
 - Electric convection wall oven with even-heat technology
 - 5-Burner gas cooktop with full-width cast iron grates
 - Convenient microwave and hoodfan combination unit
- Contemporary recessed pot lights and under-cabinet lighting beautifully illuminate your work area
- Special cabinet features include a Lazy Susan (some homes)
- Durable laminate flooring ensures an effortless clean up
- A dual roll-out recycling bin station makes it easy to care for the environment
- Stylish, undermount stainless steel sink makes food preparation and clean up simple
- Polished chrome faucet by Grohe with retractable pull-out vegetable spray offers style and convenience

PEACE OF MIND

- Secure, well-lit underground parkade with security cameras and emergency buttons gives you added safety and security
- Enterphones with security cameras outside main lobbies let you pre-screen visitors via your TV
- Each suite entry comes with a heavy deadbolt lock and door viewer
- Ground floor homes feature wired-in alarm systems
- Smoke detectors and fire sprinklers are installed in all homes and common areas
- Comprehensive warranty protection by Travelers Insurance Company of Canada, including coverage for:
 - Materials and labour (2 years)
 - Building envelope (5 years)
 - Structural components (10 years)
- Polygon "New Generation" design and construction provides outstanding durability in the West Coast climate

THOUGHTFUL TOUCHES

- Conveniently located TV outlets and telephone jacks mean your electronics are placed exactly where you want them
- Wired for high-speed Internet access
- Stacking washer/dryer is included in every home
- Enter the building, parkade and common areas with key fob access
- Secure, well-lit underground visitor parking for friends and family
- A dog wash station in the parkade creates the perfect rinsing area after a day in the neighbourhood trails
- A car wash stall is provided for your convenience

OPTIONS TO SUIT YOUR NEEDS

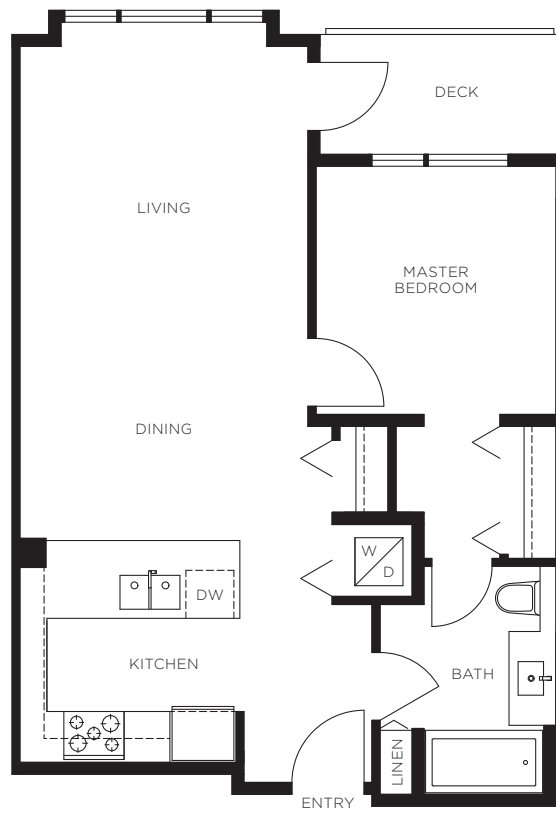
- A storage/bicycle locker to keep your gear
- A mini garage for your most valuable outdoor equipment
- Additional parking stall

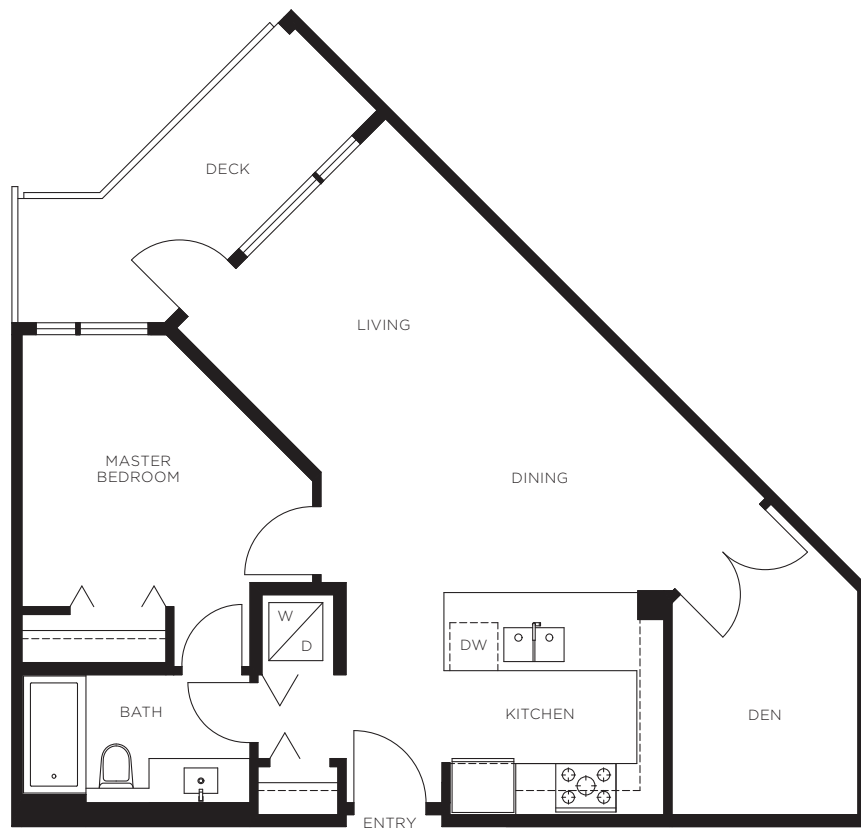


A

1 Bedroom, 1 Bathroom
Approx. 695 Sq.Ft.

DRAFT







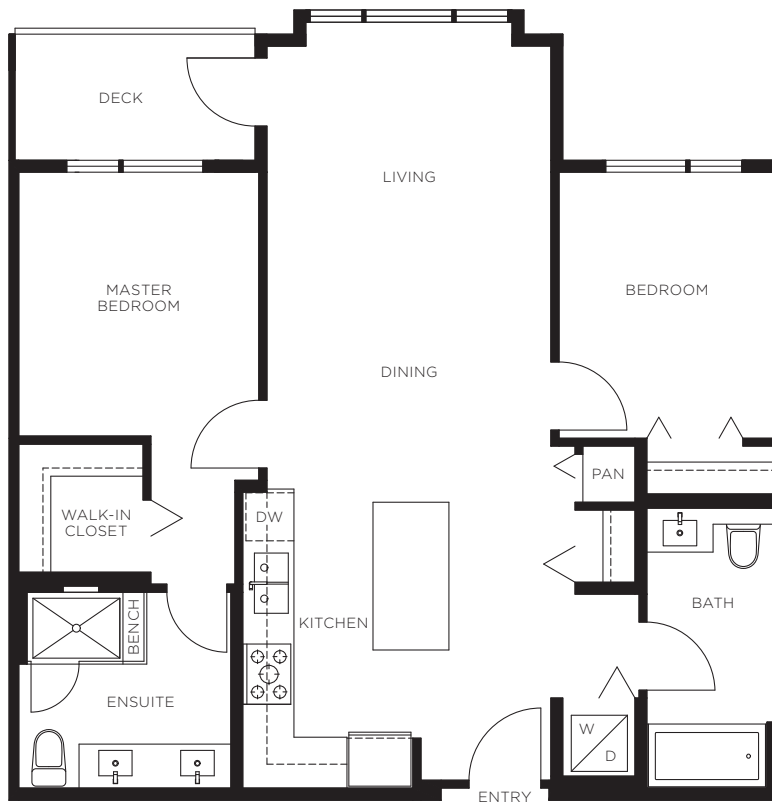
JUNIPER

TIMBER COURT

C

2 Bedroom, 2 Bathroom
Approx. 920 Sq.Ft.

DRAFT



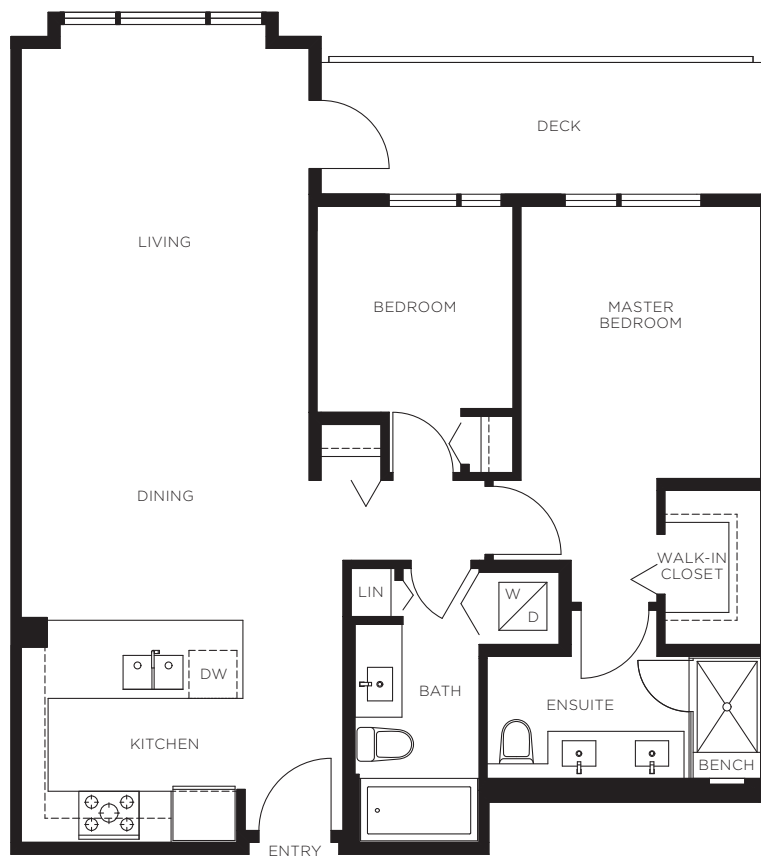
THE DEVELOPER RESERVES THE RIGHT TO MAKE MODIFICATIONS OR SUBSTITUTIONS SHOULD THEY BE NECESSARY.
ANY MEASUREMENTS PROVIDED ARE APPROXIMATE ONLY. THE QUALITY RESIDENCES AT JUNIPER ARE BUILT BY POLYGON JUNIPER HOMES LTD.
THIS IS CURRENTLY NOT AN OFFERING FOR SALE. ANY SUCH OFFERING CAN ONLY BE MADE BY WAY OF A DISCLOSURE STATEMENT. E. & O.E. 01/30/17

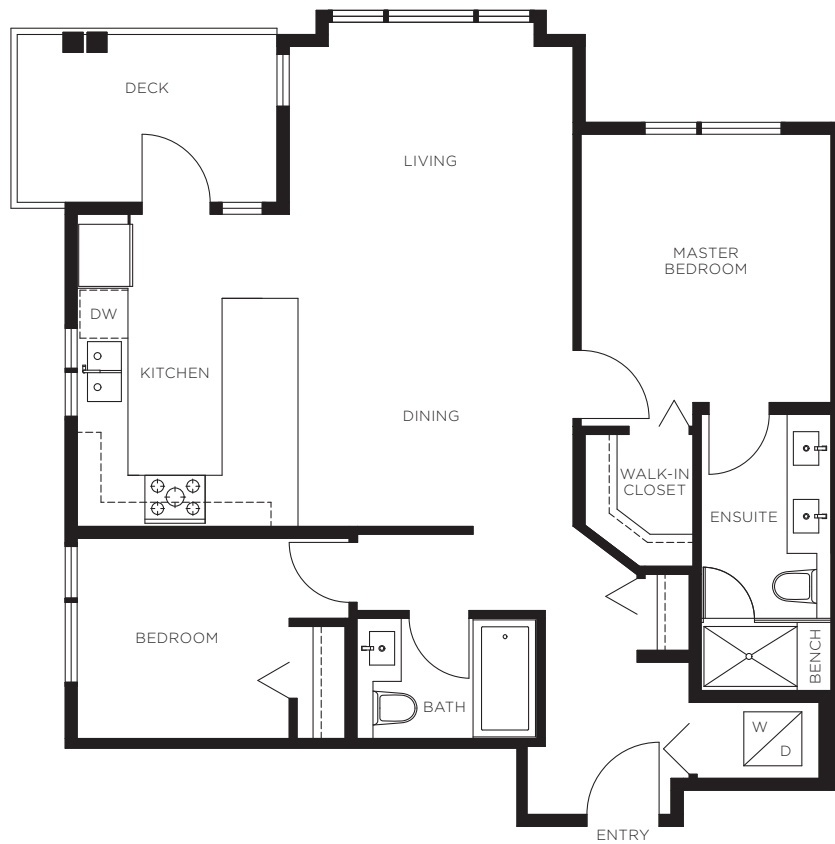


C1

2 Bedroom, 2 Bathroom
Approx. 920 Sq.Ft.

DRAFT







JUNIPER

TIMBER COURT

E

3 Bedroom, 2 Bathroom
Approx. 1,135 Sq.Ft.

DRAFT



THE DEVELOPER RESERVES THE RIGHT TO MAKE MODIFICATIONS OR SUBSTITUTIONS SHOULD THEY BE NECESSARY.
ANY MEASUREMENTS PROVIDED ARE APPROXIMATE ONLY. THE QUALITY RESIDENCES AT JUNIPER ARE BUILT BY POLYGON JUNIPER HOMES LTD.
THIS IS CURRENTLY NOT AN OFFERING FOR SALE. ANY SUCH OFFERING CAN ONLY BE MADE BY WAY OF A DISCLOSURE STATEMENT. E. & O.E. 01/30/17