



- 1. Family Room with full kitchenette
- 2. Private secondary entrance (perfect legal suite entry)
- 3. 1 or 2 car private garage
- 4. Fourth bedroom
- 5. Third bedroom
- 6. Expansive kitchen
- 7. Signature floating staircase
- 8. Master bedroom with private deck (some homes)
- 9. Private master ensuite
- 10. Second bedroom
- 11. Stunning roof top deck (some homes)

EVO LV 35

FIRST RELEASE



Developer reserves the right to make changes to the floorplans and specifications without notice. Actual homes may be a mirror image of the floorplan shown or have minor variations from the plan illustrated above. All interior square footage taken from initial survey. "R" indicates reverse plans. E.&O.E.

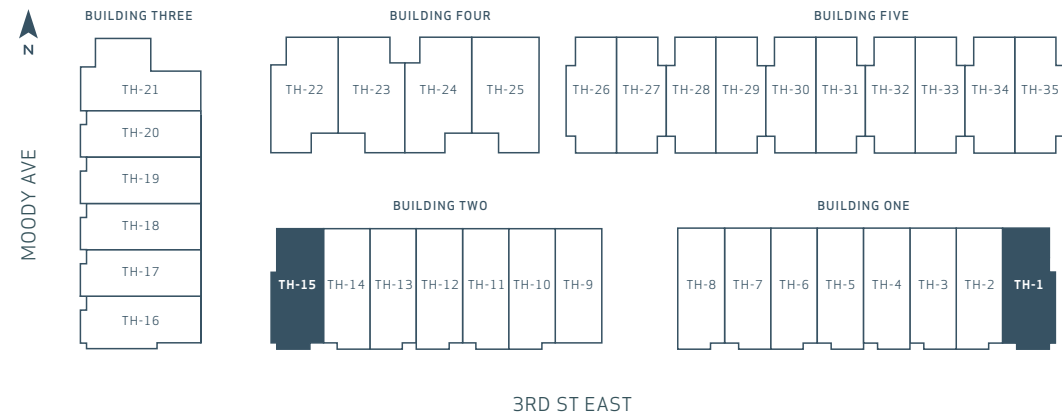
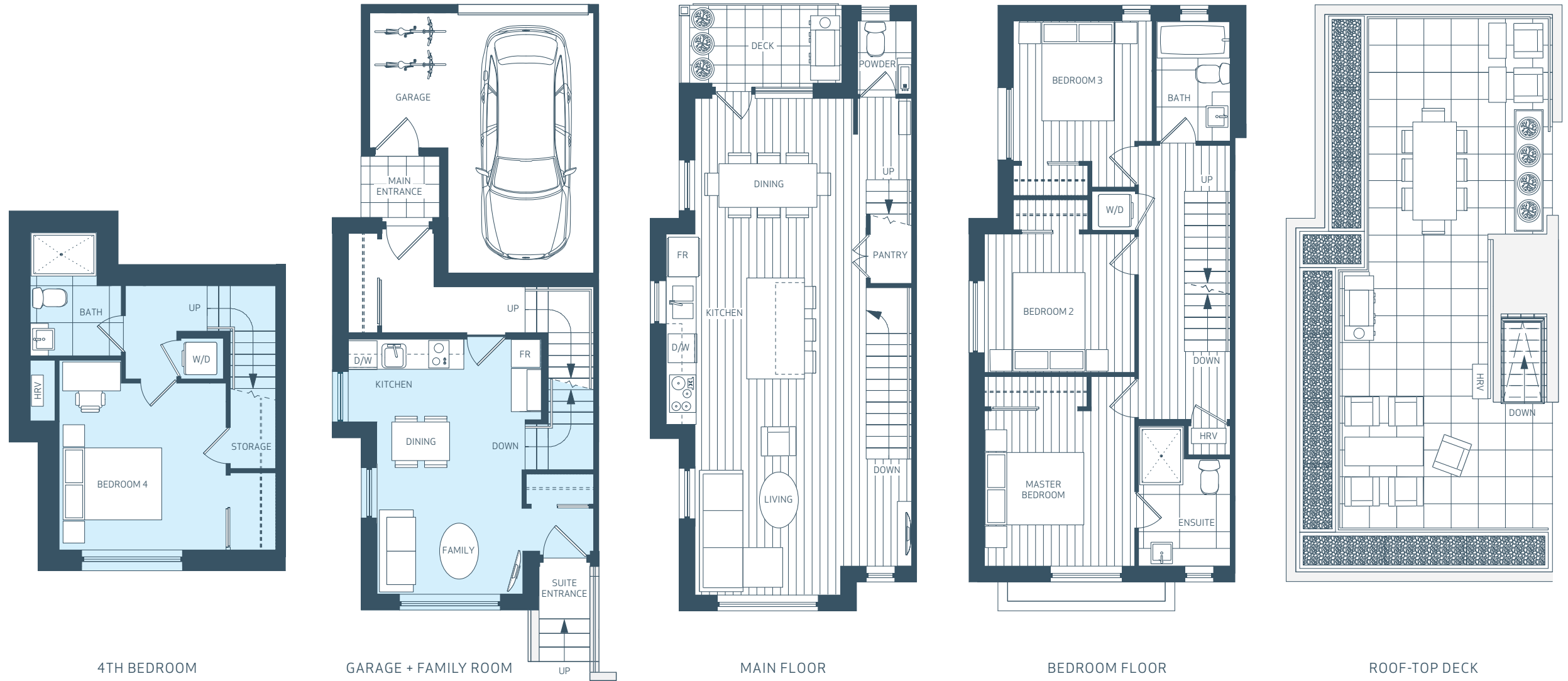
EVOLV 35

F

4 BED + FAMILY ROOM, 3.5 BATH
2,070 sq.ft.

LEGAL SUITE OPTION
652 sq.ft.

ROOF DECK
341 sq.ft.



Our largest townhome offered at Evolv35, the F Plan includes 4 bedrooms plus family room, and an expansive roof deck, where views to downtown span the horizon. An open living, dining, and kitchen space welcomes natural light from windows on three sides, including a window above the kitchen sink and large main floor deck. This family-friendly home offers 3 bedrooms on one level plus the versatility of a family room and 4th bedroom or a legal 1-bedroom suite option. Other notable features include a private garage with extra storage space, powder room on the main level, and an extra-large main entry foyer.

Developer reserves the right to make changes to the floorplans and specifications without notice. Actual homes may be a mirror image of the floorplan shown or have minor variations from the plan illustrated above. All interior square footage taken from initial survey. E.&O.E

evolvedliving.ca