

**ROSSETTI**

**208 150 WEST 15TH STREET**

**CENTRAL LONSDALE, NORTH VANCOUVER**



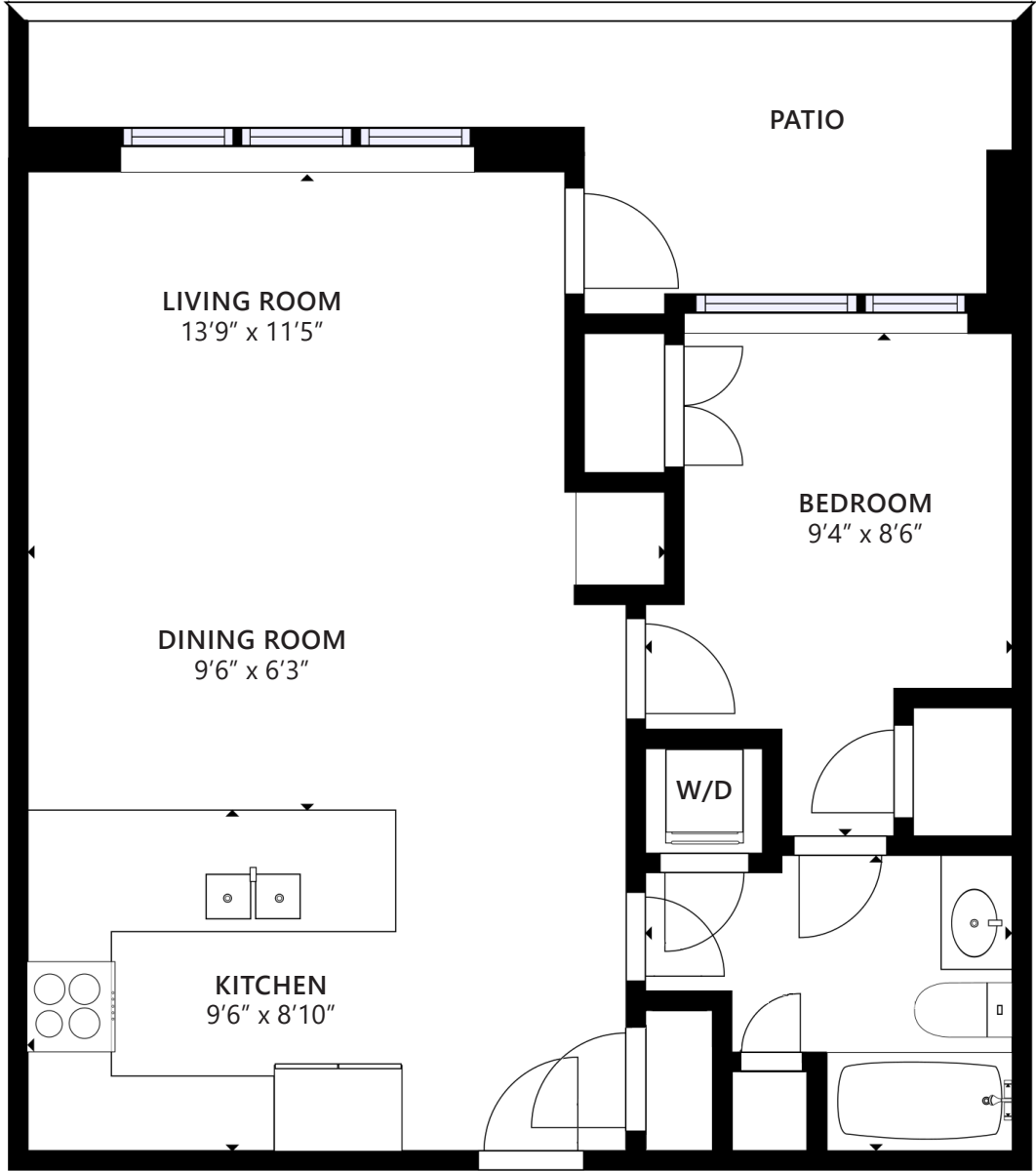
## SOUTH FACING 1 BDRM PATIO SUITE IN '15 WEST'

1 Bed | 1 Bath | 662 Sq.Ft. Condo

■ Bright, south facing 1 bdrm patio suite in '15 West'. Offering 662 sq/ft with a spacious open plan design and modern, high-end finishes. The gourmet kitchen features granite counters, a bar stool peninsula, and stainless appliances including a wall oven, microwave/steamer, & gas range. The adjacent living/dining room is a good size for everyday use + entertaining and includes direct access to the patio that runs the full width of the suite with plenty of room for a table/seating area and BBQ (with a natural gas connection). Completing the home is the bedroom (with soon to be installed new carpeting), 4-piece bathroom, and in suite laundry. Includes 1 parking & a storage locker. Additional features include engineered hardwood floors, hot water heat (included in your maintenance fees), 8'6" ceilings, and a practical built-in desk. 15 West is a well-regarded building developed by Grosvenor and offers a gym, meeting room, social lounge, and a garden terrace (with easy access down the hall from this suite). 2 pets allowed. Situated in a superb central location with a Walk Score of 97!! just steps to all amenities including City Market, Whole Foods, shopping, restaurants, the Library, transit, and more.







Interior square footage from strata plan. Layout and measurements by Matterport. Square footage, room measurements, & dimensions are approximate and not guaranteed. Information should not be relied upon without independent verification. This communication is not intended to cause or induce breach of an existing agency agreement.