

Plan C1

WATERFRONT COLLECTION

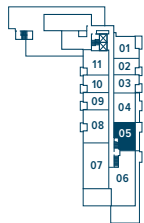
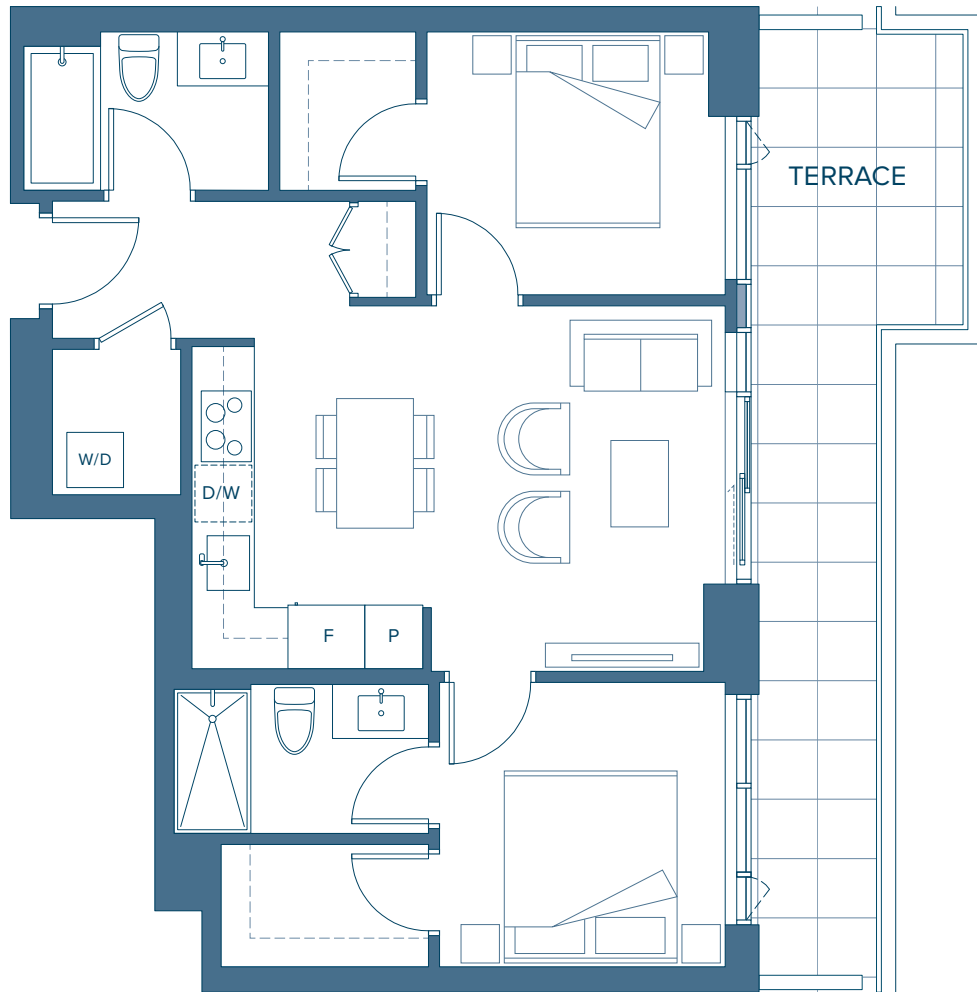
2 BEDROOM

INTERIOR 762 SQ. FT.

EXTERIOR 202 SQ. FT.

DRIFT

NORTH HARBOUR™



^
N WATERFRONT
LEVEL 8

Concert reserves the right to make changes to floorplans, project design, specifications, finishes and features. Suite sizes, dimensions and floorplan layouts are approximate and may vary. E.&O.E. June 2021. *Trademarks of Concert Properties Ltd., used under license where applicable.

CONCERT®

Plan C10

WATERFRONT COLLECTION

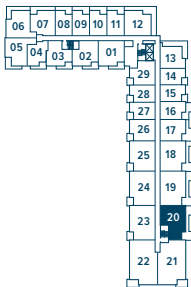
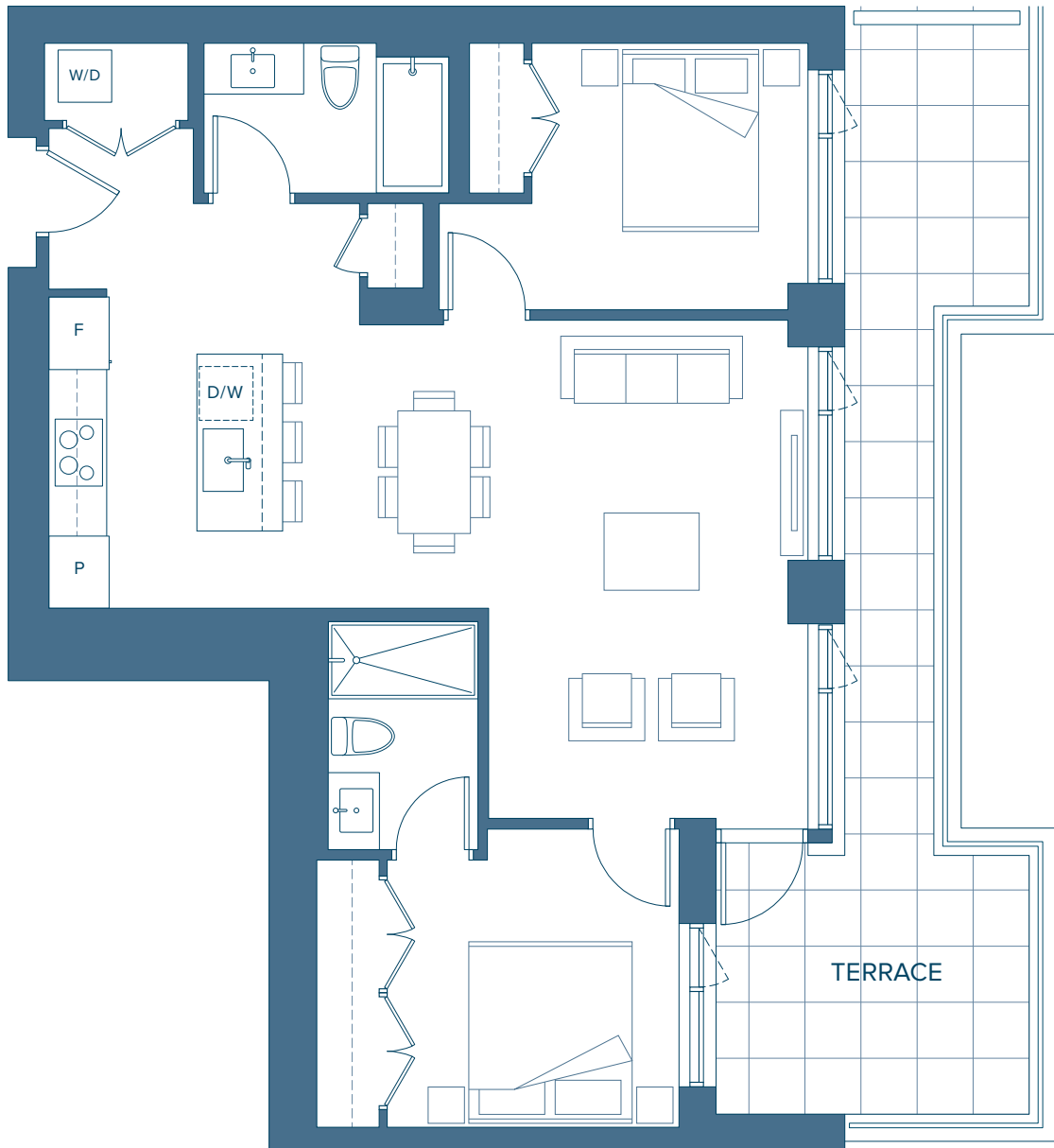
2 BEDROOM

INTERIOR 973 SQ. FT.

EXTERIOR 303 SQ. FT.

DRIFT

NORTH HARBOUR™



WATERFRONT
LEVEL 3

Plan C11

WATERFRONT COLLECTION

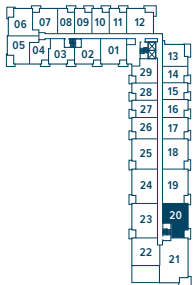
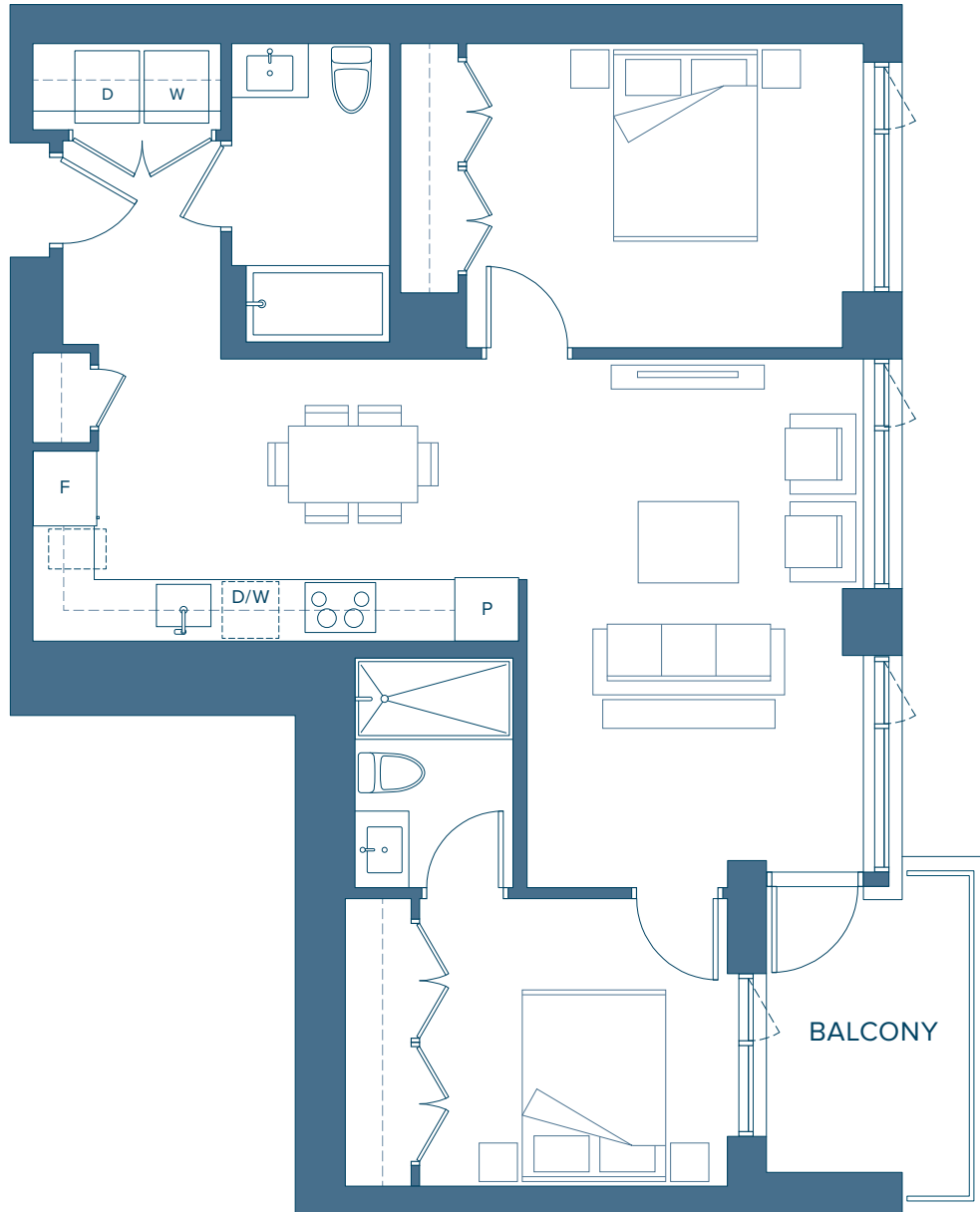
2 BEDROOM

INTERIOR 974 SQ. FT.

EXTERIOR 84 SQ. FT.

DRIFT

NORTH HARBOUR™



WATERFRONT
LEVEL 4

Plan C14

WATERFRONT COLLECTION

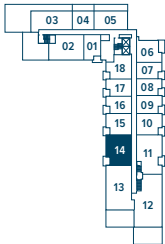
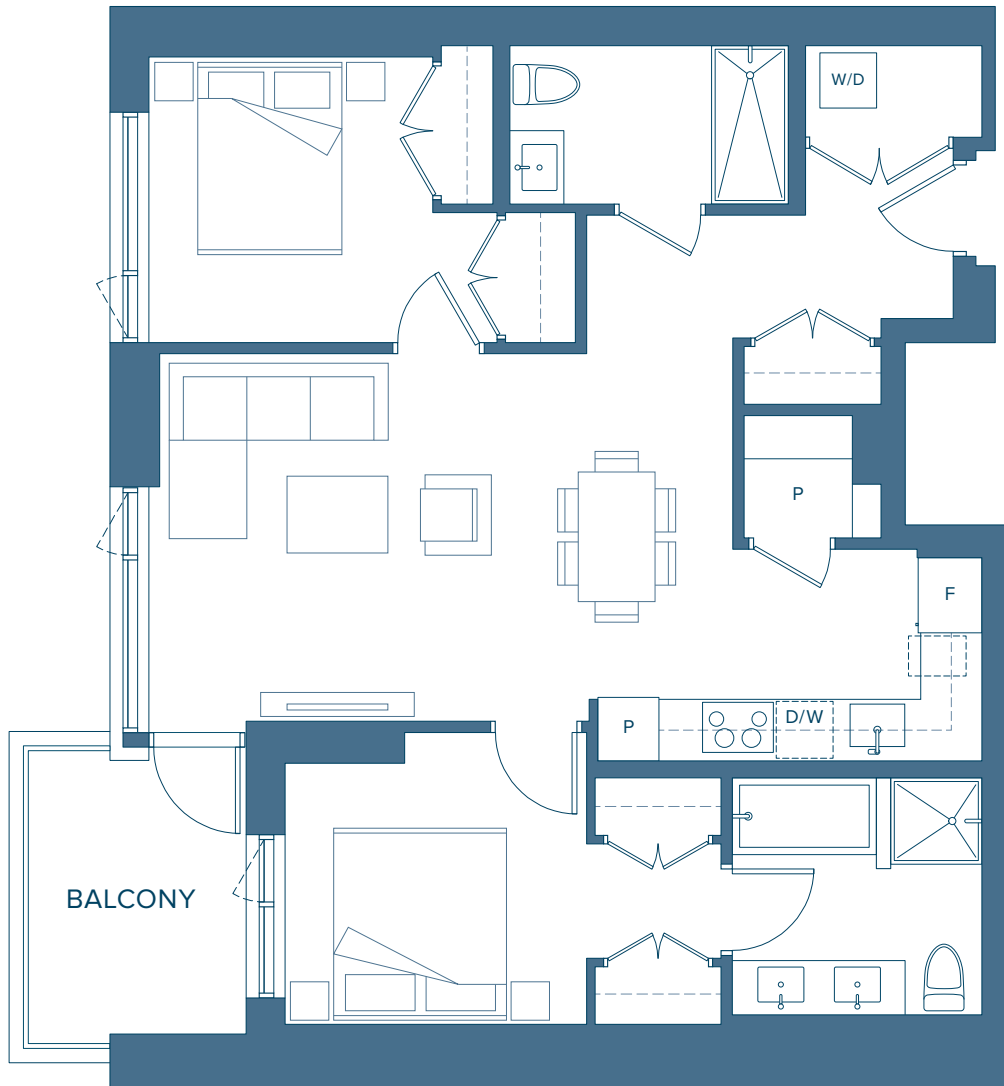
2 BEDROOM

INTERIOR 989 SQ. FT.

EXTERIOR 87 SQ. FT.

DRIFT

NORTH HARBOUR™



^ WATERFRONT
N LEVEL 7

Plan C16

WATERFRONT COLLECTION

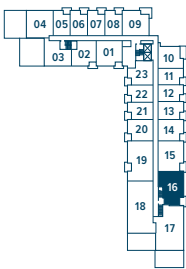
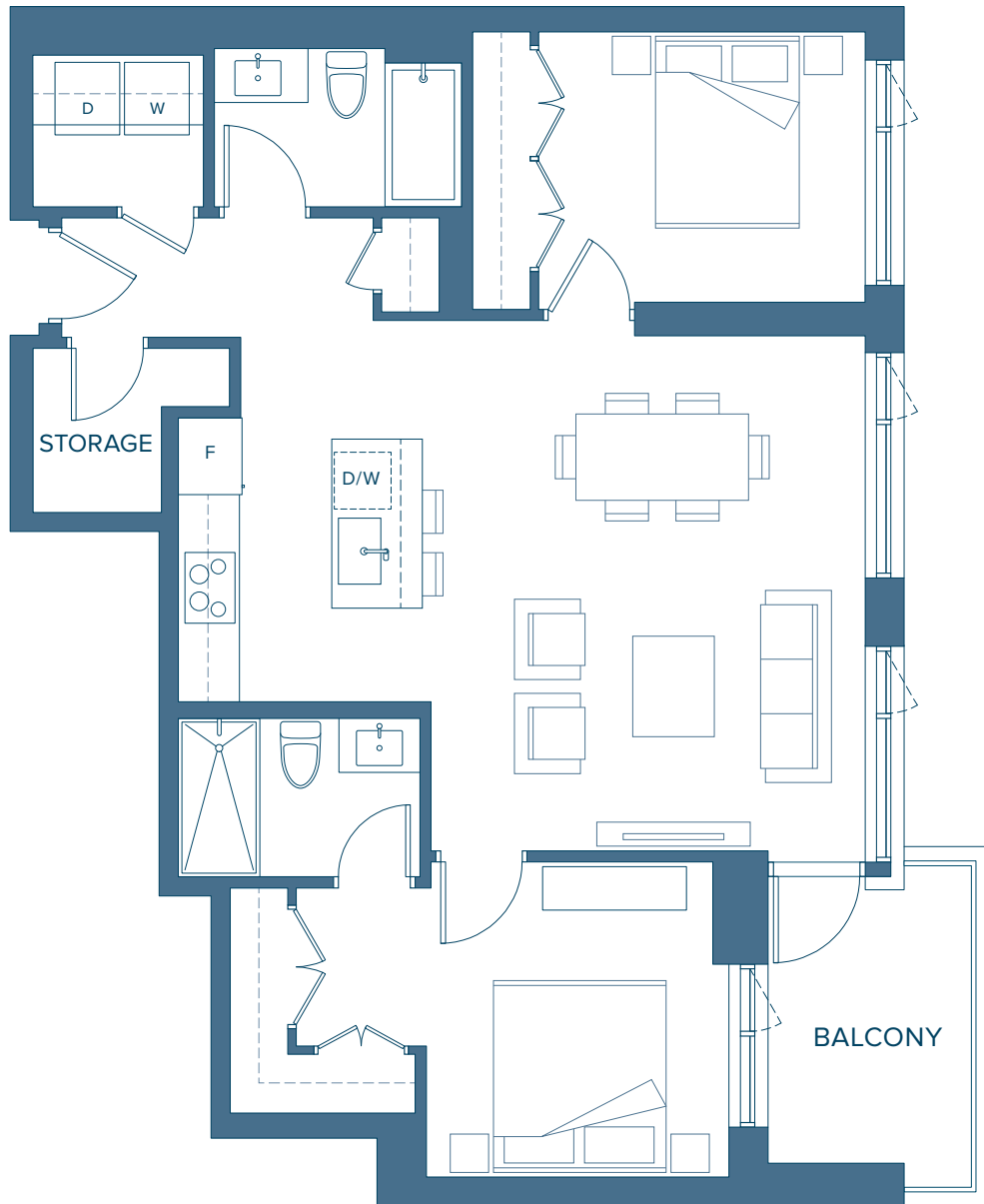
2 BEDROOM

INTERIOR 1,021 SQ. FT.

EXTERIOR 84 SQ. FT.

DRIFT

NORTH HARBOUR™



^ WATERFRONT
N LEVEL 6

Plan C17

WATERFRONT COLLECTION

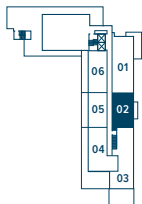
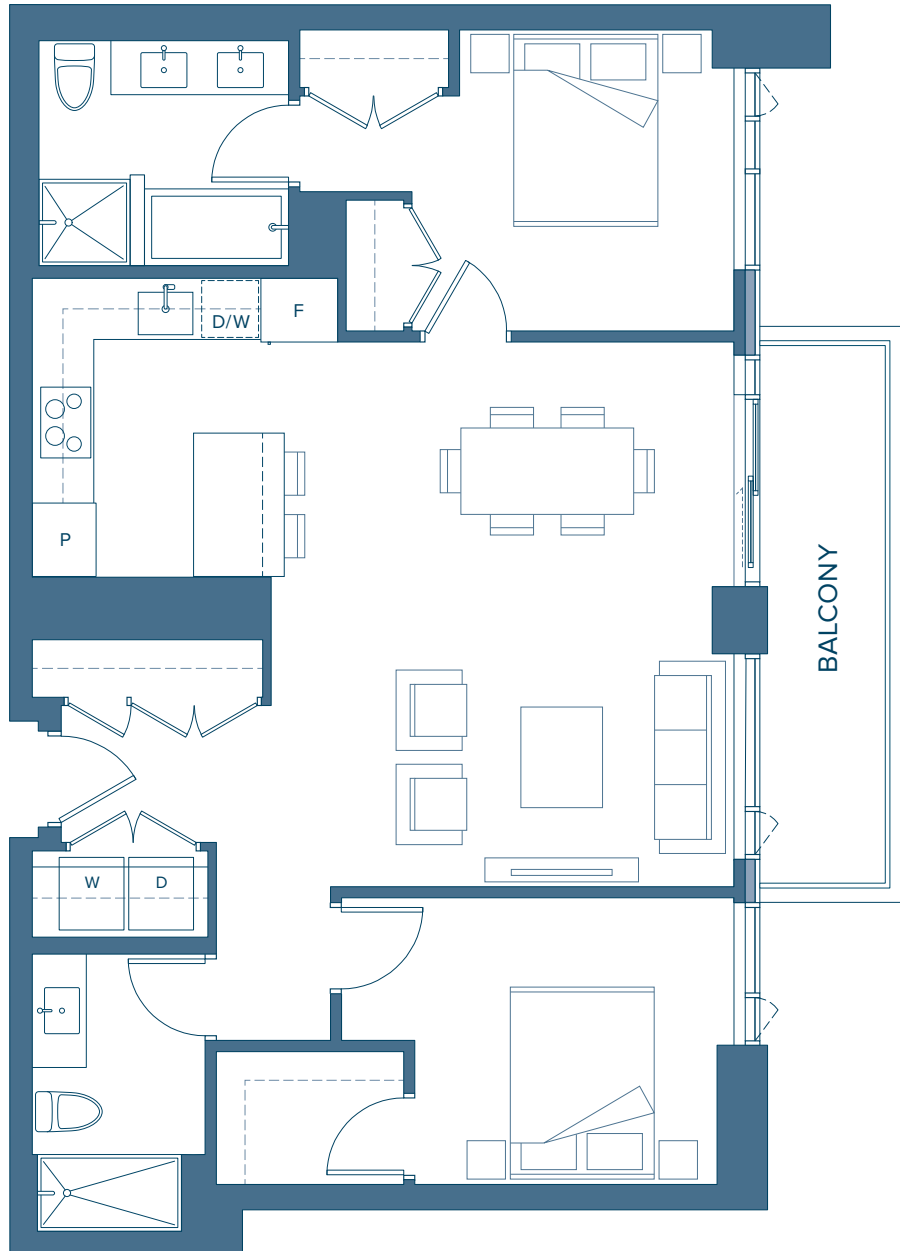
2 BEDROOM

INTERIOR 1,053 SQ. FT.

EXTERIOR 100 SQ. FT.

DRIFT

NORTH HARBOUR™



^
N WATERFRONT
LEVEL 9

Plan C18

WATERFRONT COLLECTION

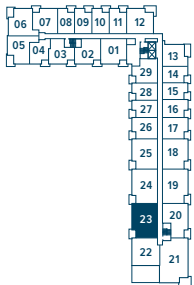
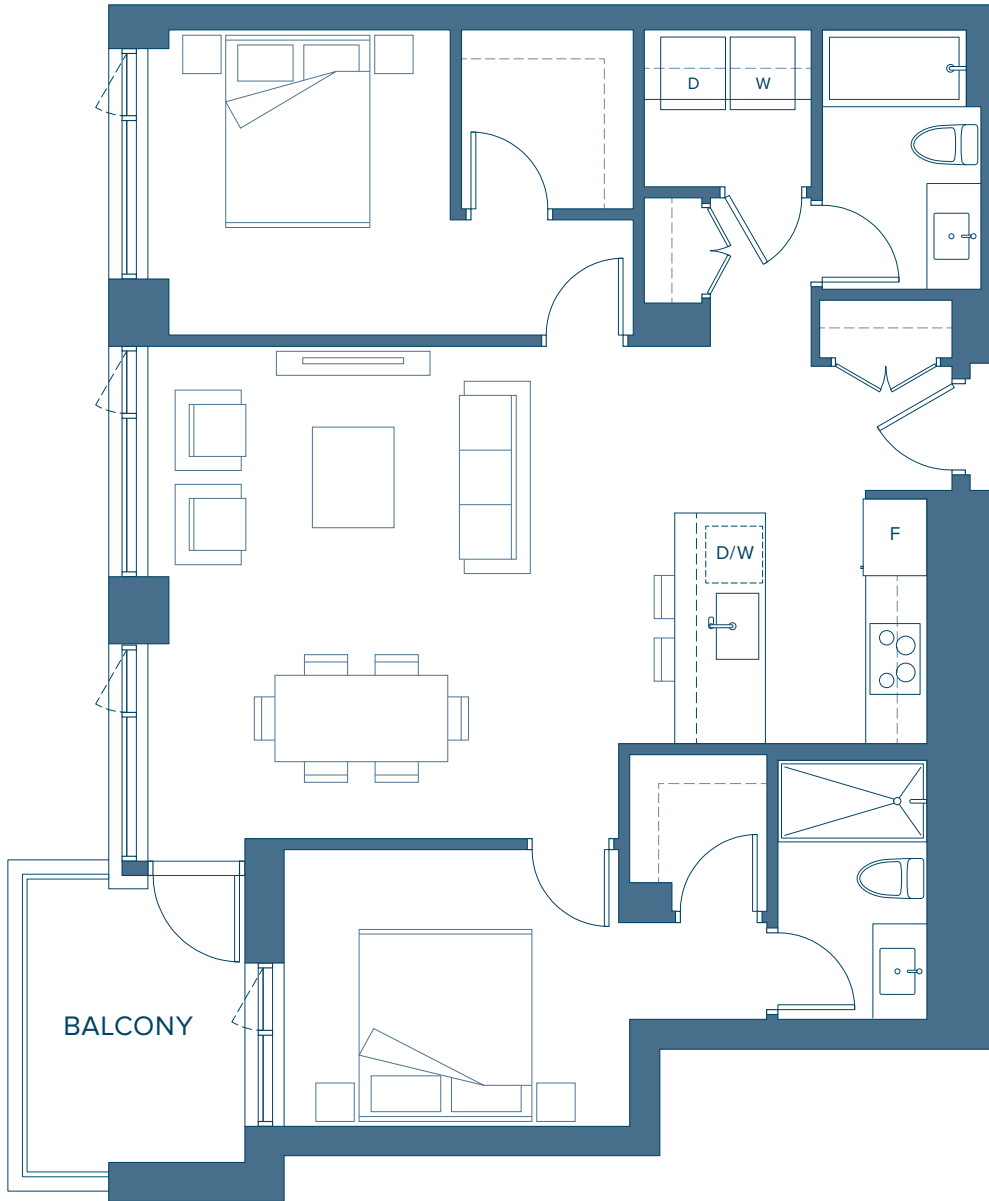
2 BEDROOM

INTERIOR 1,068 SQ. FT.

EXTERIOR 87 SQ. FT.

DRIFT

NORTH HARBOUR™



WATERFRONT

LEVEL 4

Plan C19

WATERFRONT COLLECTION

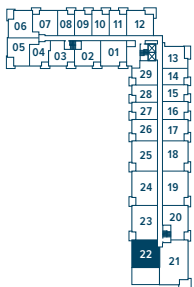
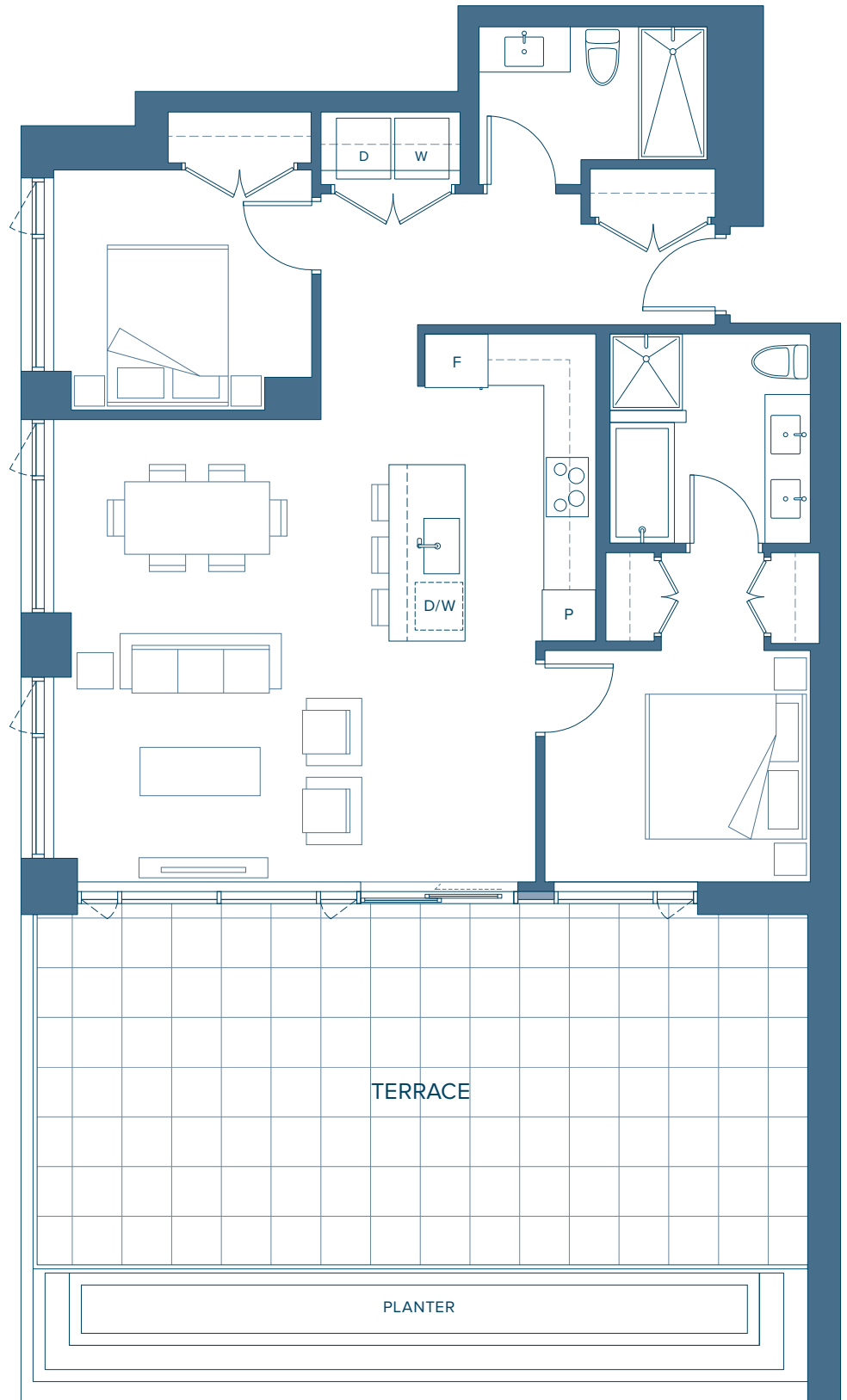
2 BEDROOM

INTERIOR 1,079 SQ. FT.

EXTERIOR 674 SQ. FT.

DRIFT

NORTH HARBOUR™



WATERFRONT
LEVEL 4



Plan C20

WATERFRONT COLLECTION

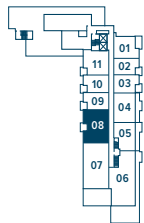
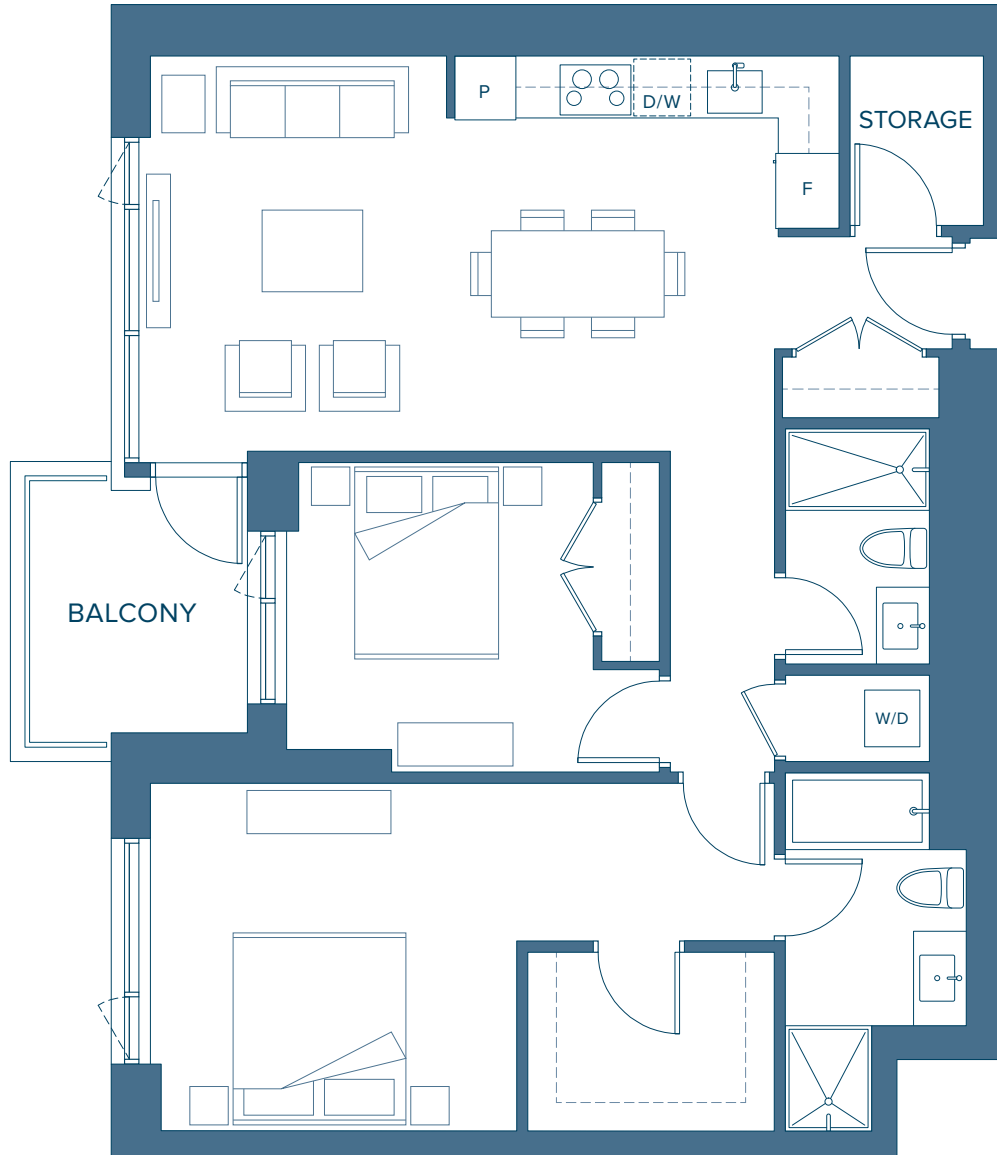
2 BEDROOM

INTERIOR 1,099 SQ. FT.

EXTERIOR 78 SQ. FT.

DRIFT

NORTH HARBOUR™



^
N WATERFRONT
LEVEL 8

Plan C8

WATERFRONT COLLECTION

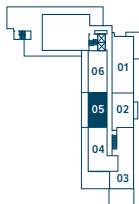
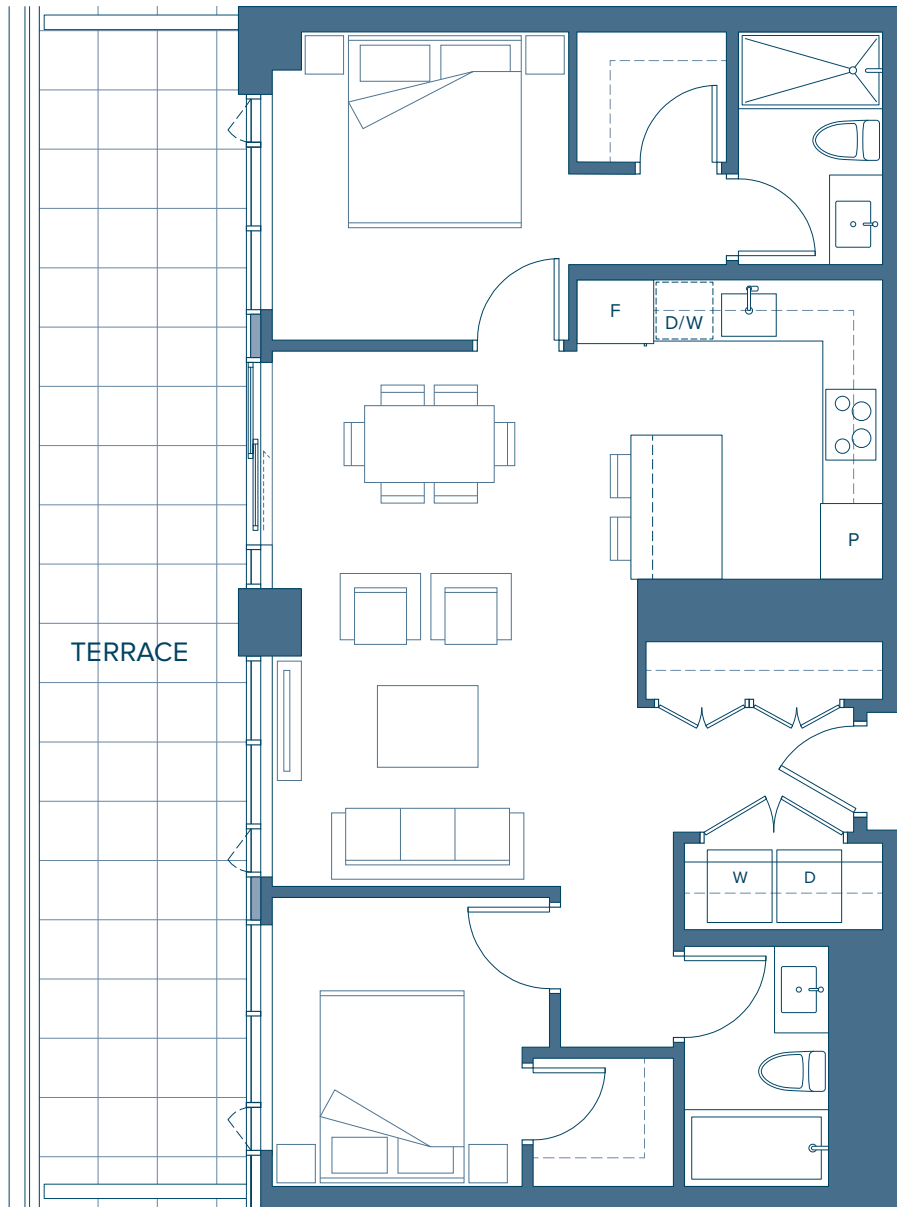
2 BEDROOM

INTERIOR 906 SQ. FT.

EXTERIOR 332 SQ. FT.

DRIFT

NORTH HARBOUR™



WATERFRONT
LEVEL 9

Concert reserves the right to make changes to floorplans, project design, specifications, finishes and features. Suite sizes, dimensions and floorplan layouts are approximate and may vary. E.&O.E. June 2021. *Trademarks of Concert Properties Ltd., used under license where applicable.

CONCERT®

Plan D3

WATERFRONT COLLECTION

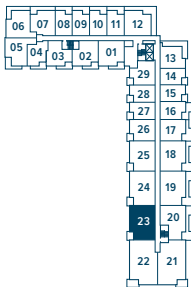
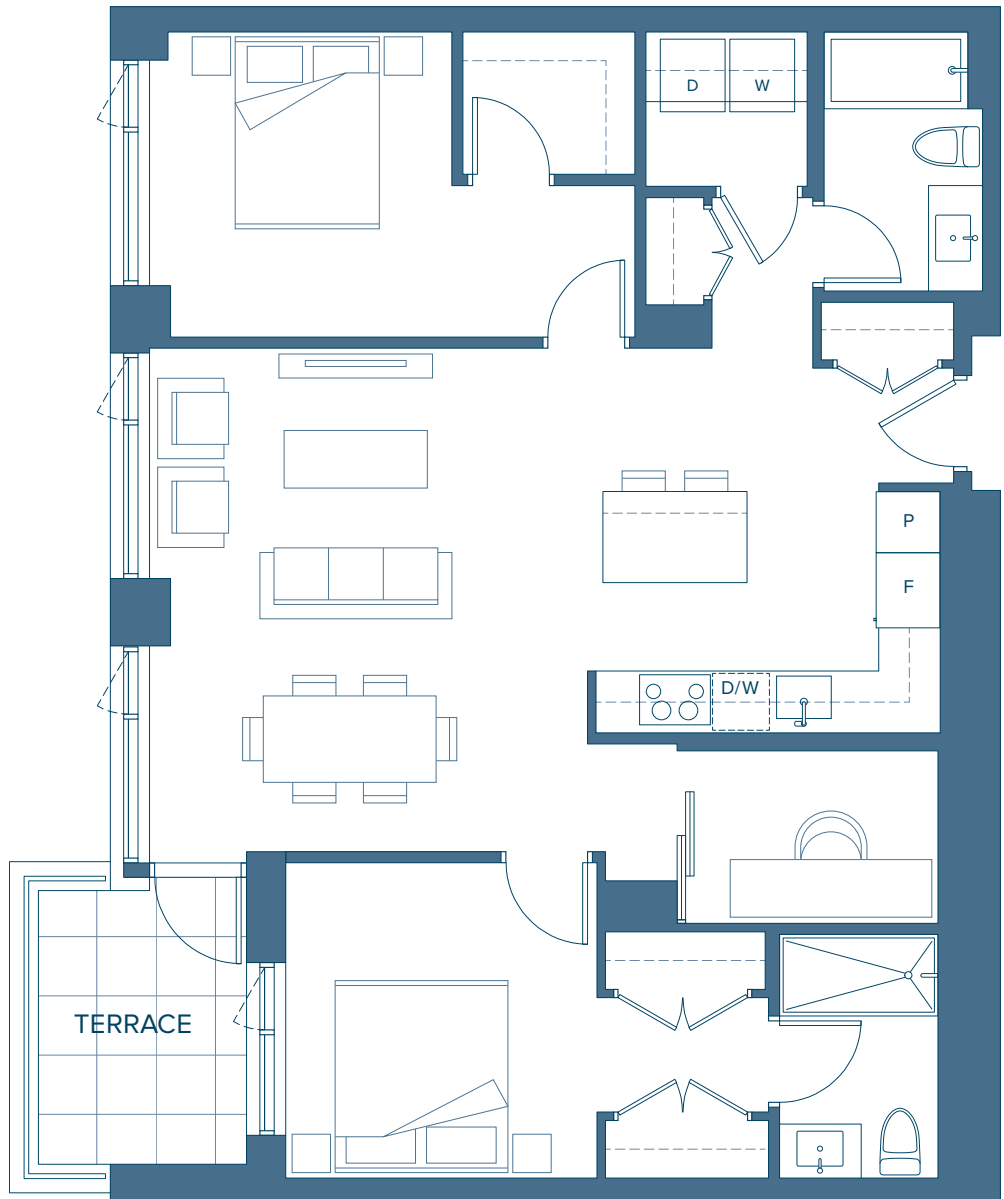
2 BEDROOM + DEN

INTERIOR 1,153 SQ. FT.

EXTERIOR 87 SQ. FT.

DRIFT

NORTH HARBOUR™



WATERFRONT

LEVEL 3

Plan D5

WATERFRONT COLLECTION

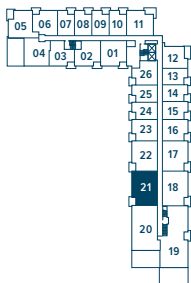
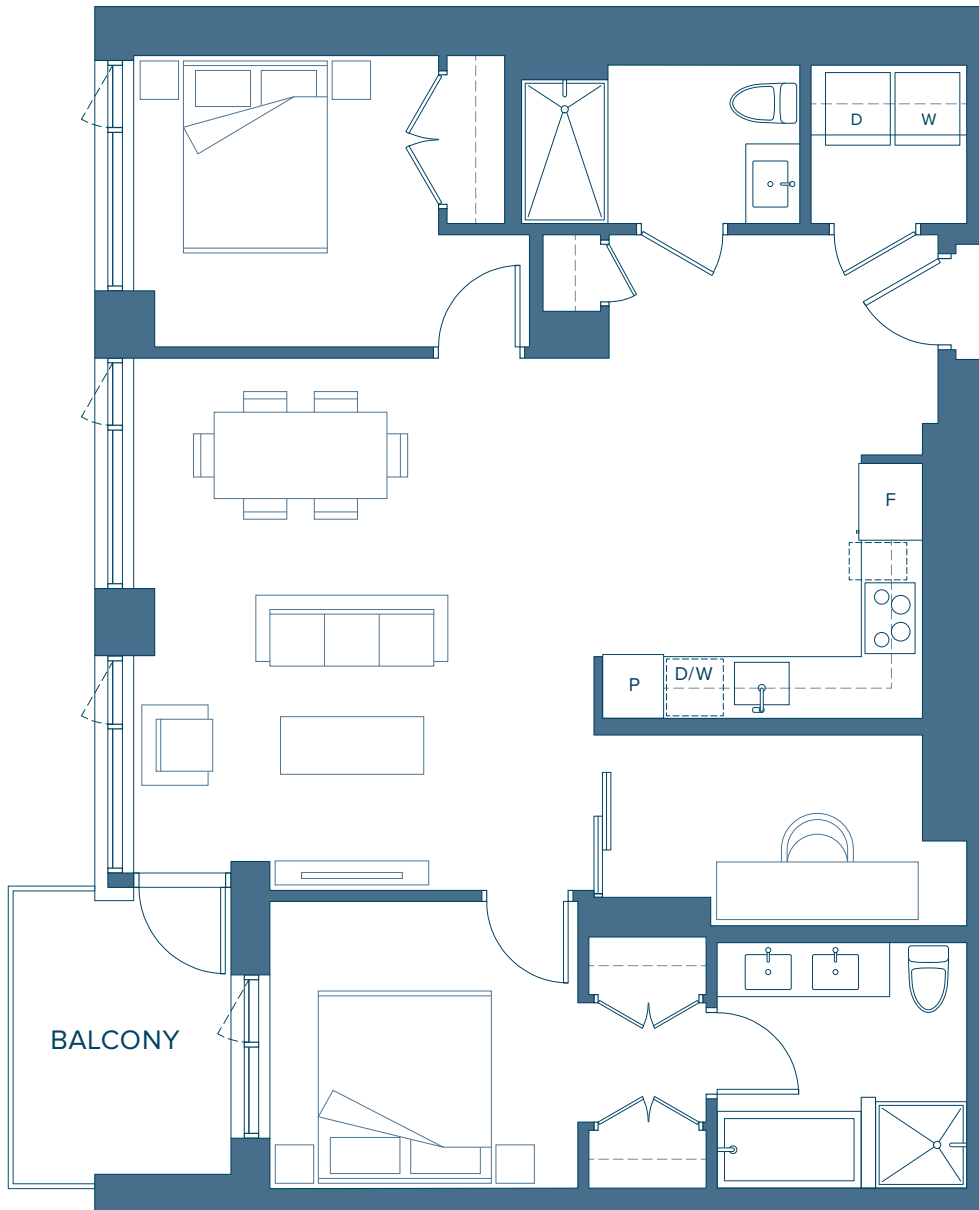
2 BEDROOM + DEN

INTERIOR 1,163 SQ. FT.

EXTERIOR 87 SQ. FT.

DRIFT

NORTH HARBOUR™



WATERFRONT
LEVEL 5

Plan D6

WATERFRONT COLLECTION

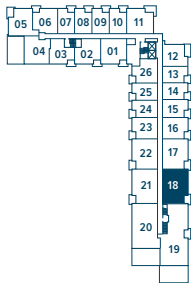
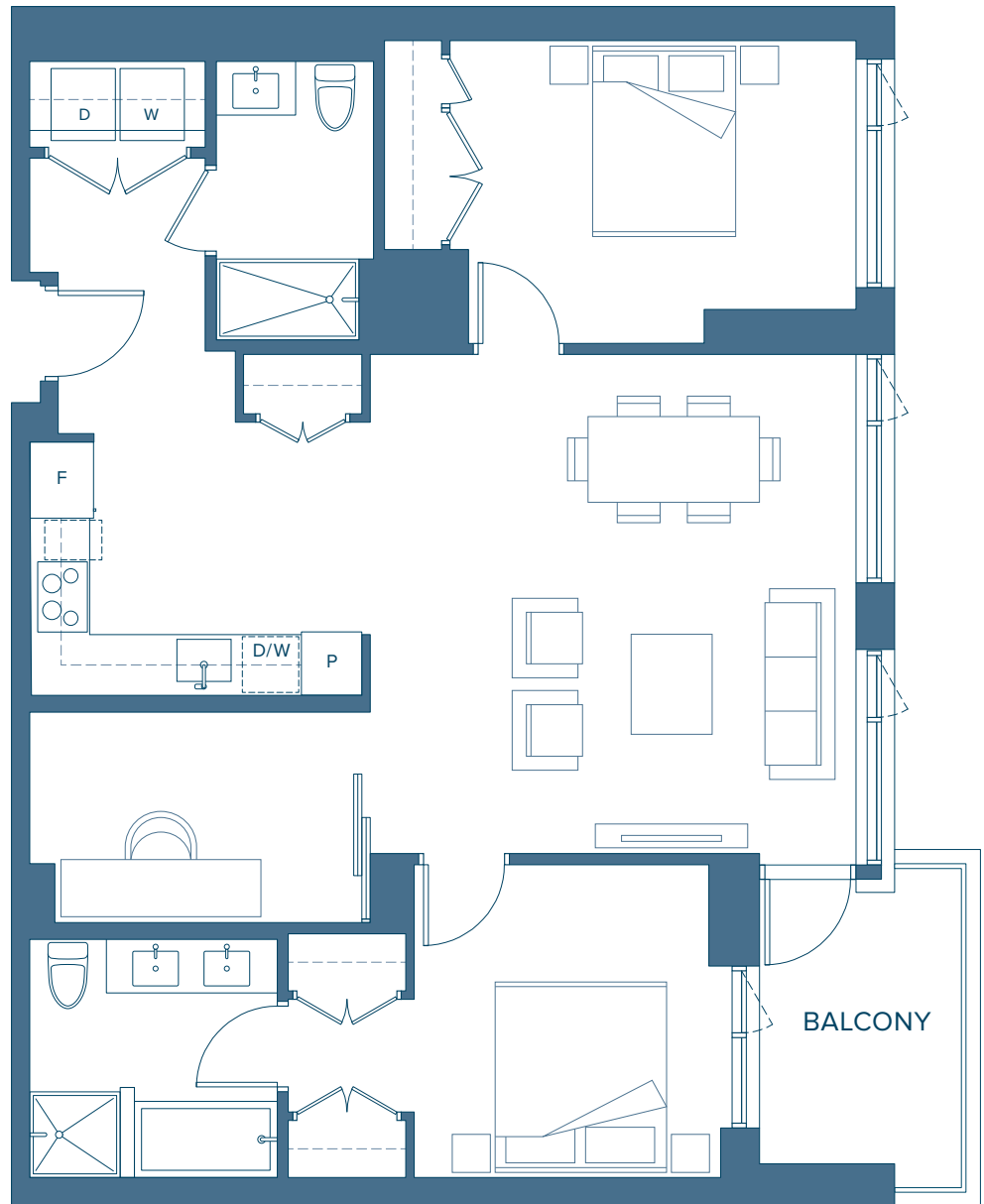
2 BEDROOM + DEN

INTERIOR 1,169 SQ. FT.

EXTERIOR 84 SQ. FT.

DRIFT

NORTH HARBOUR™



WATERFRONT
LEVEL 5

Plan D8

WATERFRONT COLLECTION

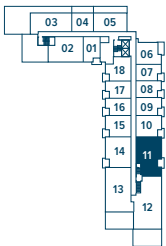
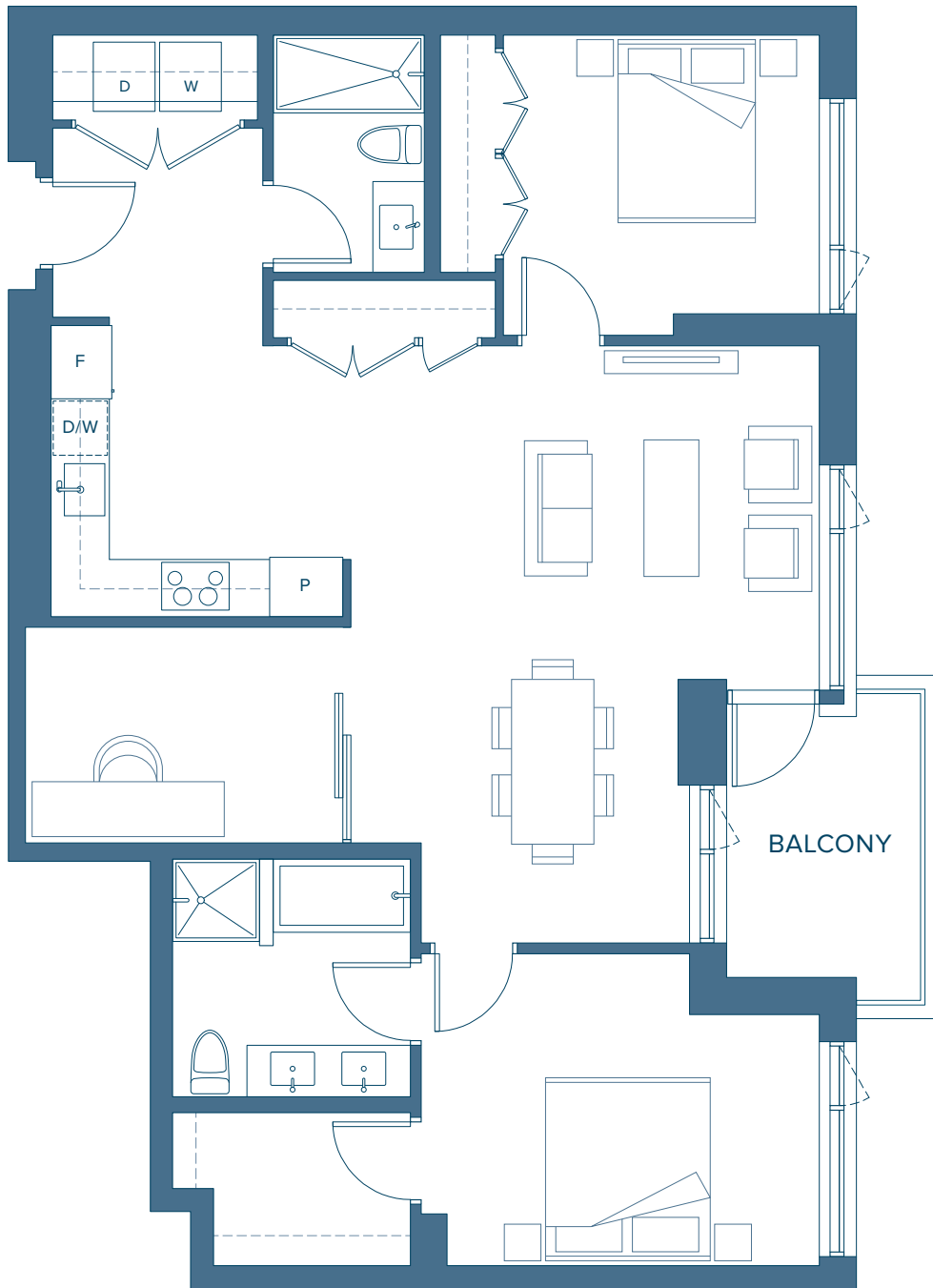
2 BEDROOM + DEN

INTERIOR 1,240 SQ. FT.

EXTERIOR 84 SQ. FT.

DRIFT

NORTH HARBOUR™



^
N WATERFRONT
LEVEL 7

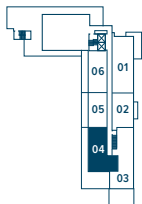
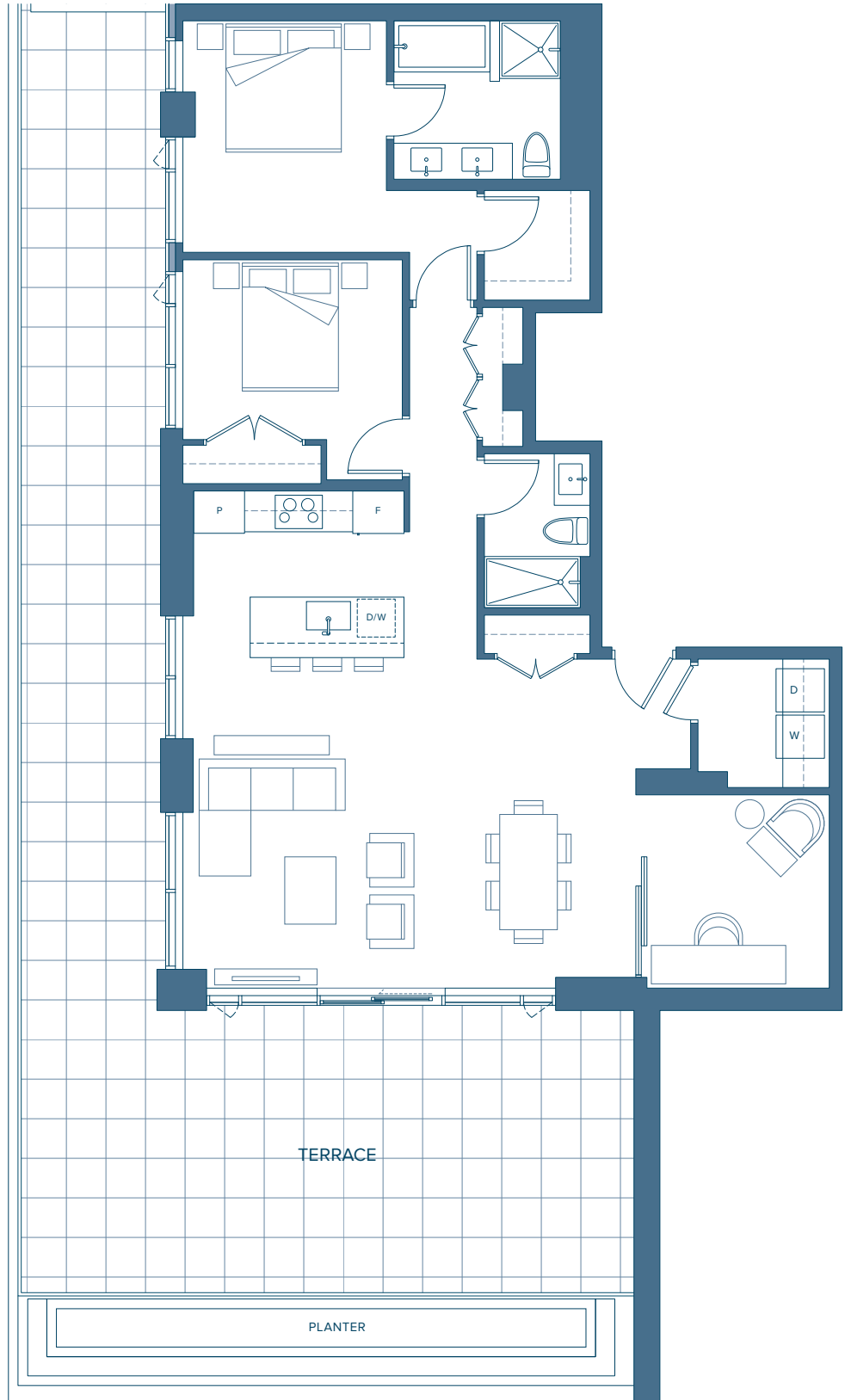
Plan E2

WATERFRONT COLLECTION

2 BEDROOM + FAMILY
INTERIOR 1,344 SQ. FT.
EXTERIOR 1,100 SQ. FT.

DRIFT

NORTH HARBOUR™



WATERFRONT
LEVEL 9

Concert reserves the right to make changes to floorplans, project design, specifications, finishes and features. Suite sizes, dimensions and floorplan layouts are approximate and may vary. E.&O.E. June 2021. *Trademarks of Concert Properties Ltd., used under license where applicable.

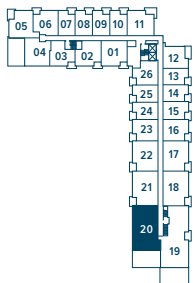
Plan E3

WATERFRONT COLLECTION

2 BEDROOM + FAMILY
INTERIOR 1,569 SQ. FT.
EXTERIOR 674 SQ. FT.

DRIFT

NORTH HARBOUR™



WATERFRONT
LEVEL 5

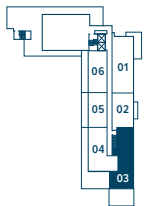
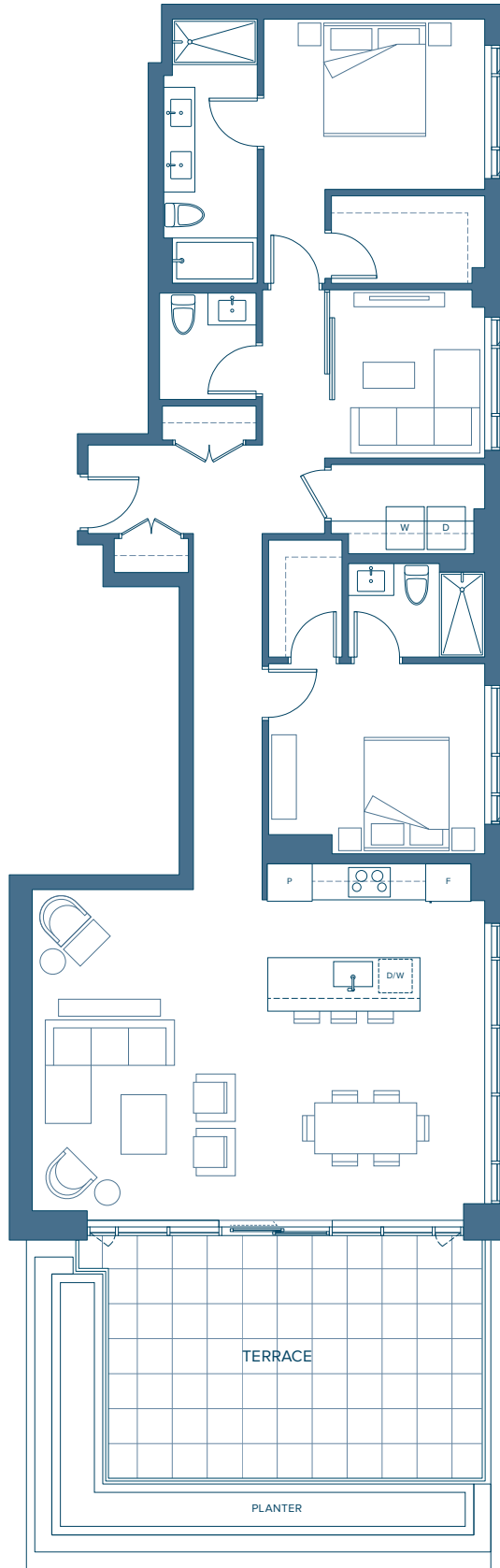
Plan E4

WATERFRONT COLLECTION

2 BEDROOM + FAMILY
INTERIOR 1,617 SQ. FT.
EXTERIOR 607 SQ. FT.

DRIFT

NORTH HARBOUR™



WATERFRONT
LEVEL 9

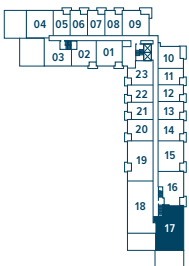
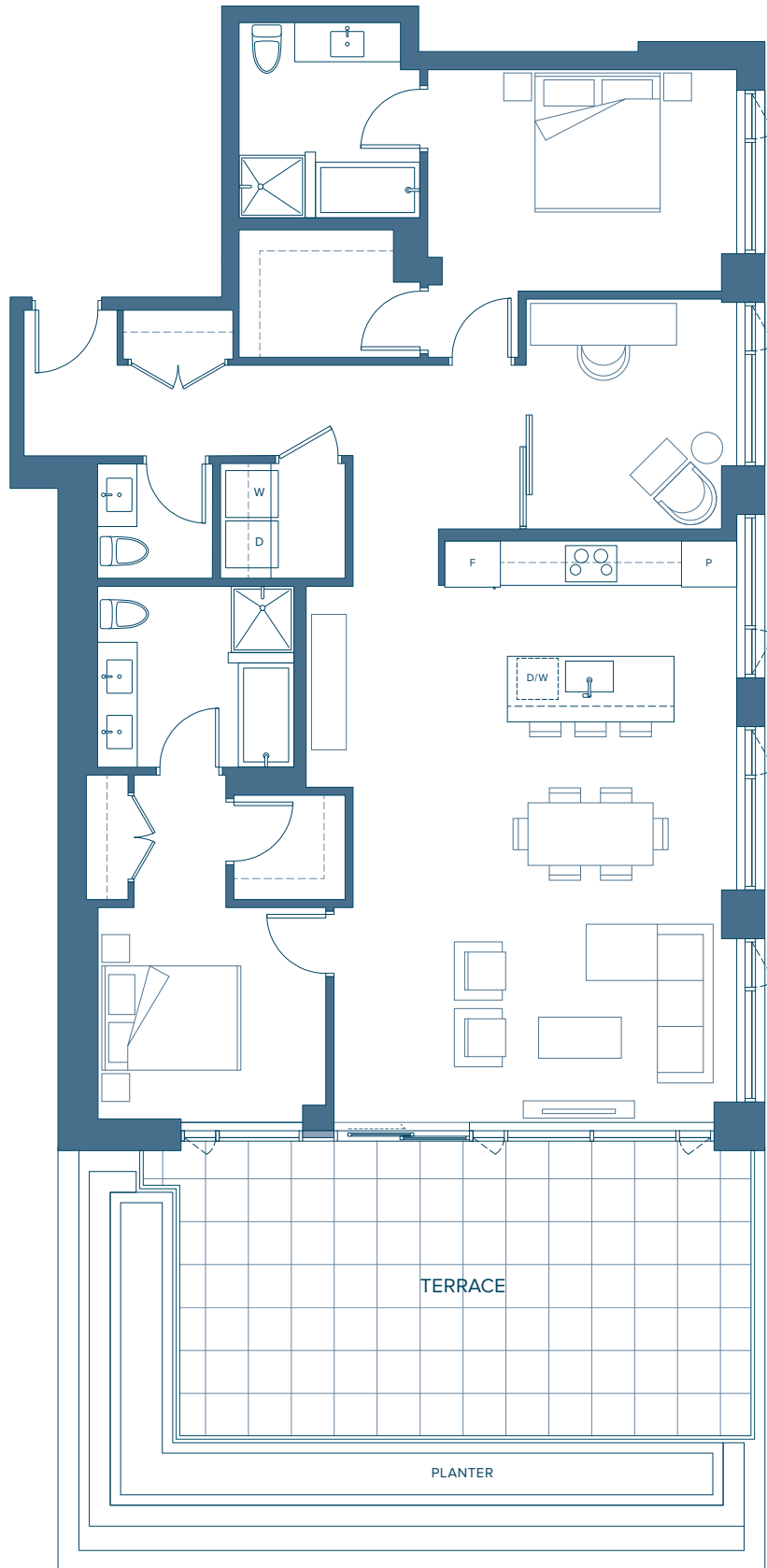
Plan E5

WATERFRONT COLLECTION

2 BEDROOM + FAMILY
INTERIOR 1,640 SQ. FT.
EXTERIOR 701 SQ. FT.

DRIFT

NORTH HARBOUR™



^
N
WATERFRONT
LEVEL 6

Plan F1

WATERFRONT COLLECTION

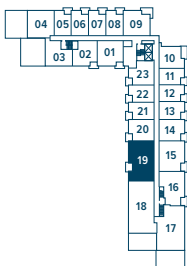
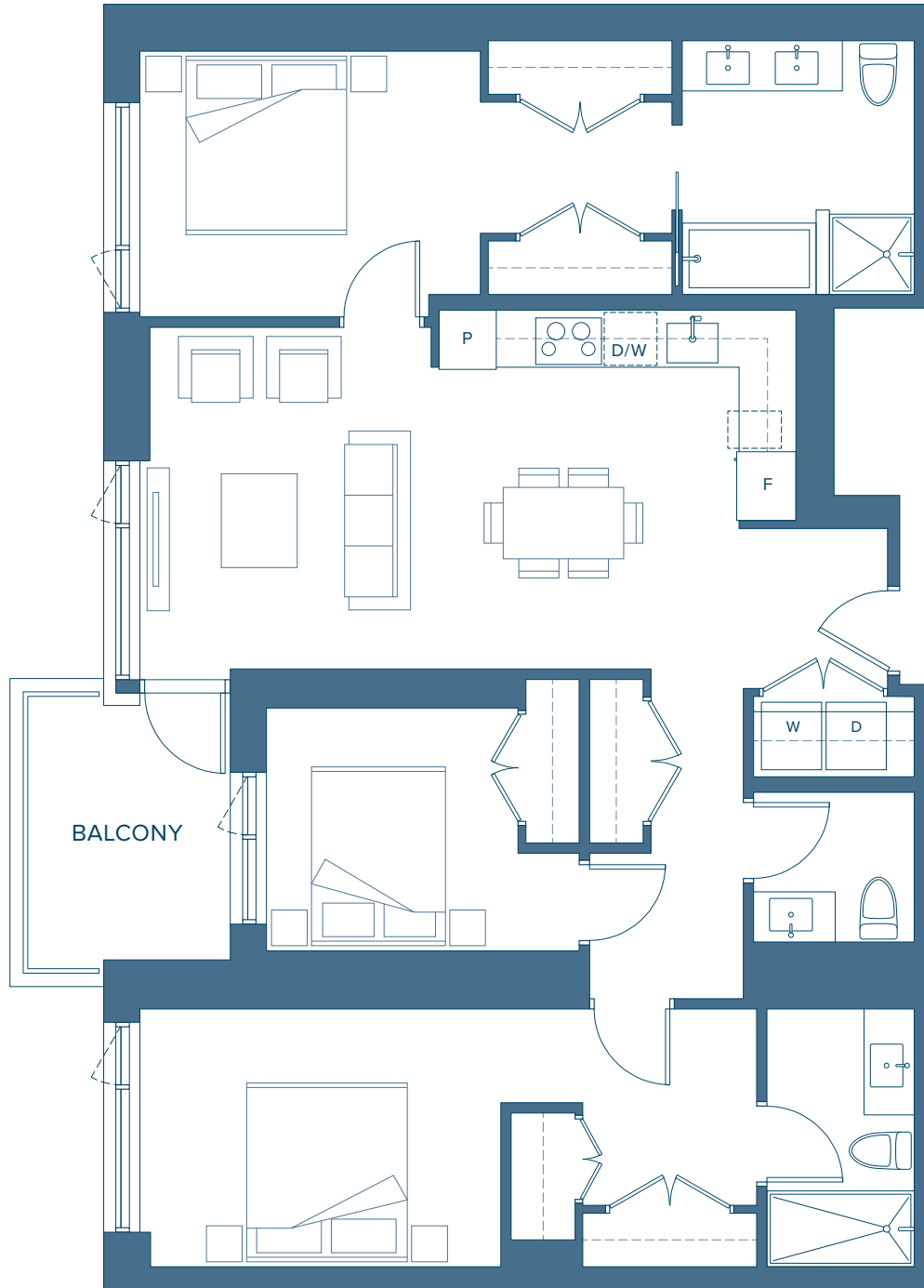
3 BEDROOM

INTERIOR 1,322 SQ. FT.

EXTERIOR 87 SQ. FT.

DRIFT

NORTH HARBOUR™



WATERFRONT
LEVEL 6

Plan F2

WATERFRONT COLLECTION

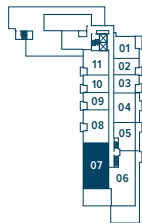
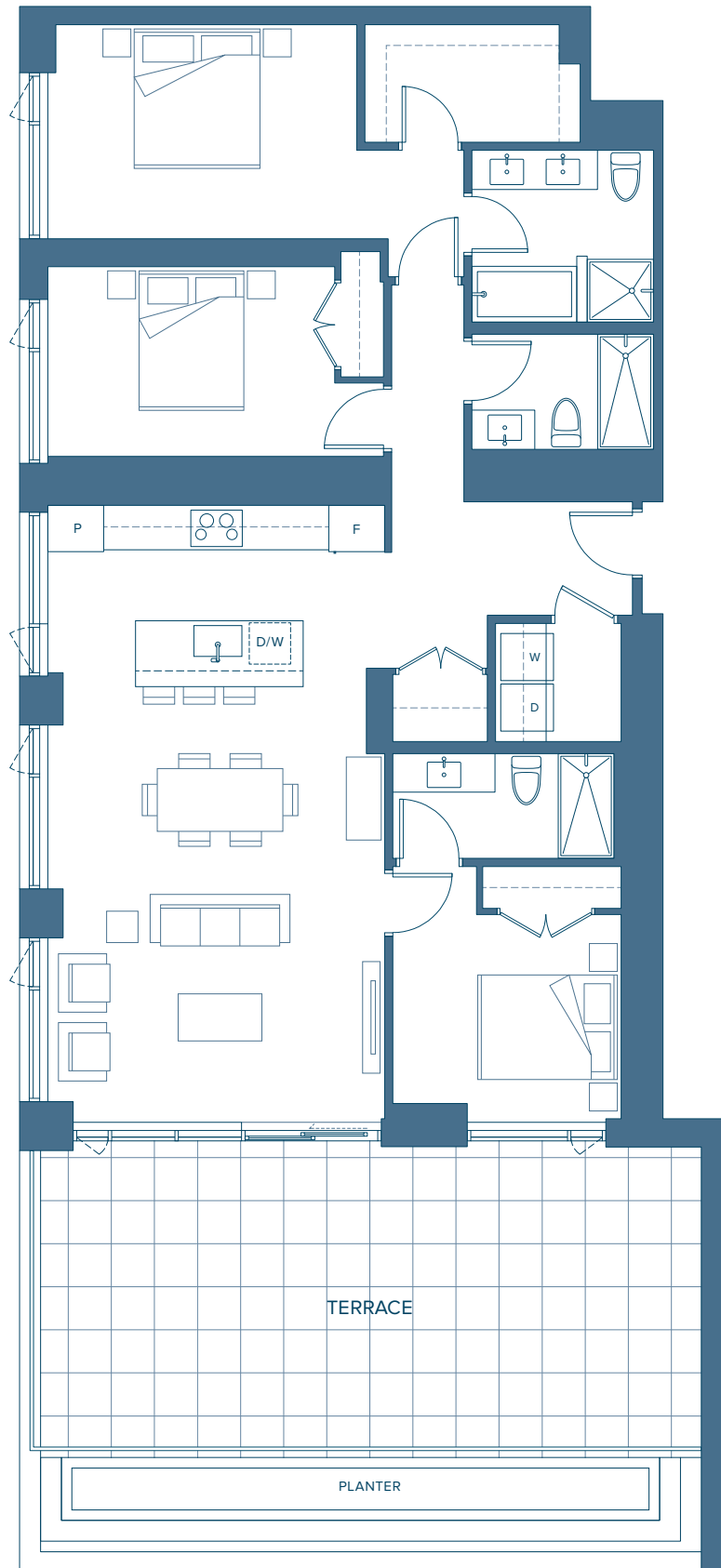
3 BEDROOM

INTERIOR 1,570 SQ. FT.

EXTERIOR 674 SQ. FT.

DRIFT

NORTH HARBOUR™



WATERFRONT
LEVEL 8

Concert reserves the right to make changes to floorplans, project design, specifications, finishes and features. Suite sizes, dimensions and floorplan layouts are approximate and may vary. E.&O.E. June 2021. *Trademarks of Concert Properties Ltd., used under license where applicable.

Plan F3

WATERFRONT COLLECTION

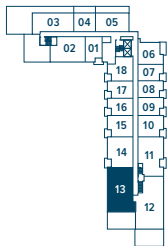
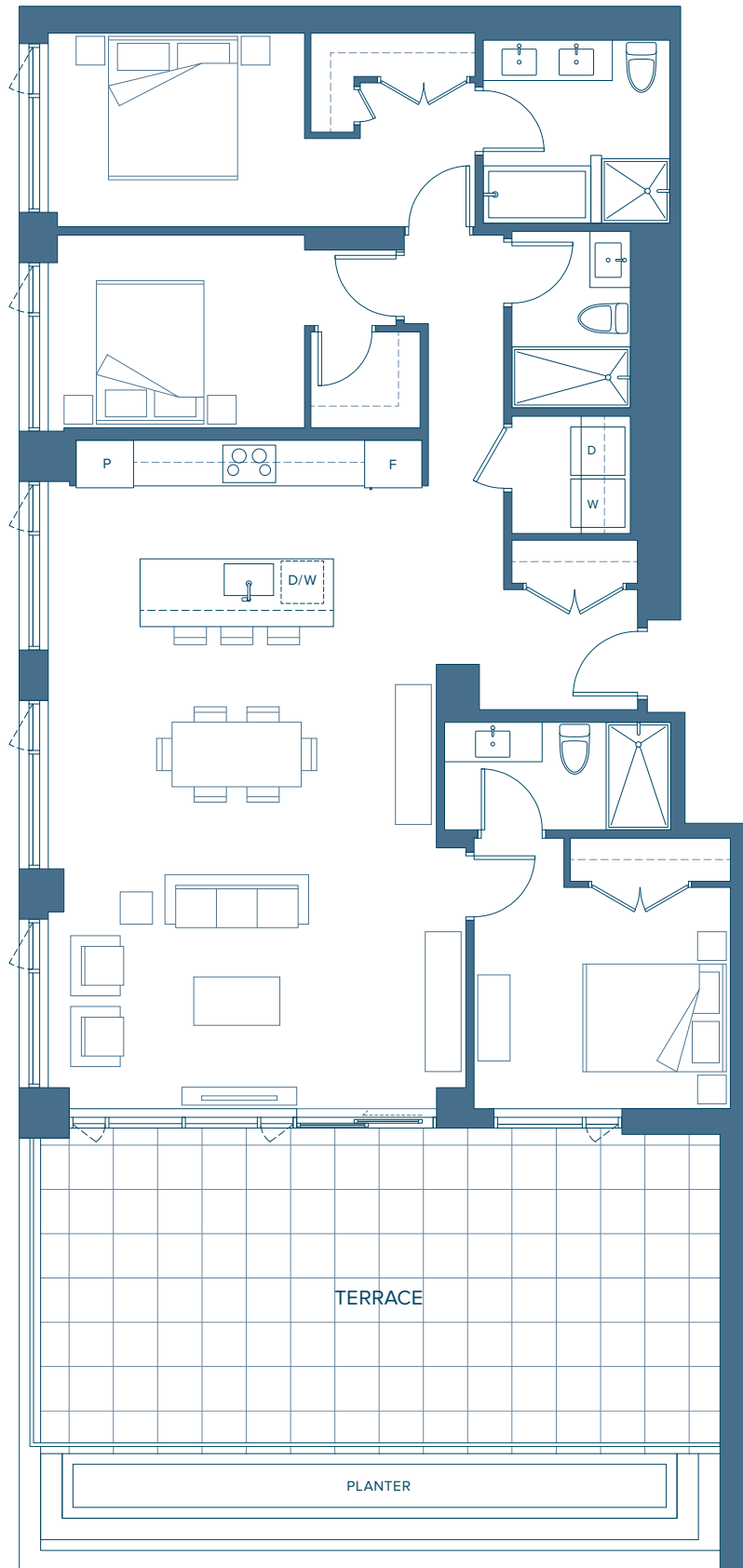
3 BEDROOM

INTERIOR 1,579 SQ. FT.

EXTERIOR 674 SQ. FT.

DRIFT

NORTH HARBOUR™



WATERFRONT
LEVEL 7

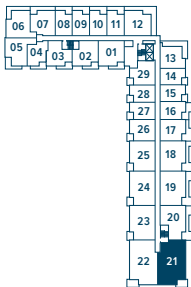
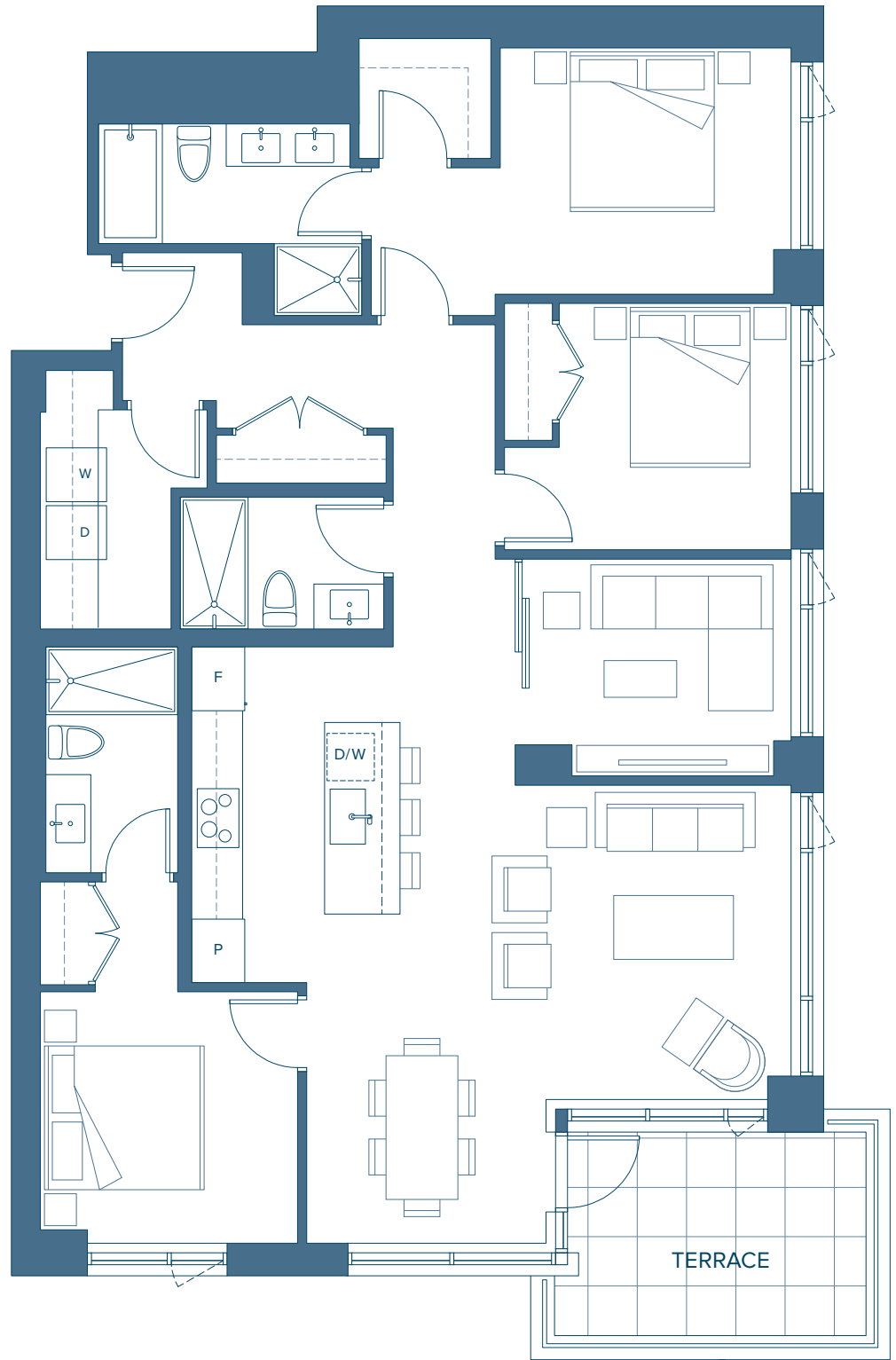
Plan G1

WATERFRONT COLLECTION

3 BEDROOM + FAMILY
INTERIOR 1,548 SQ. FT.
EXTERIOR 137 SQ. FT.

DRIFT

NORTH HARBOUR™



WATERFRONT
LEVEL 3

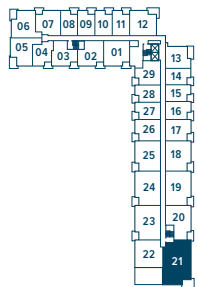
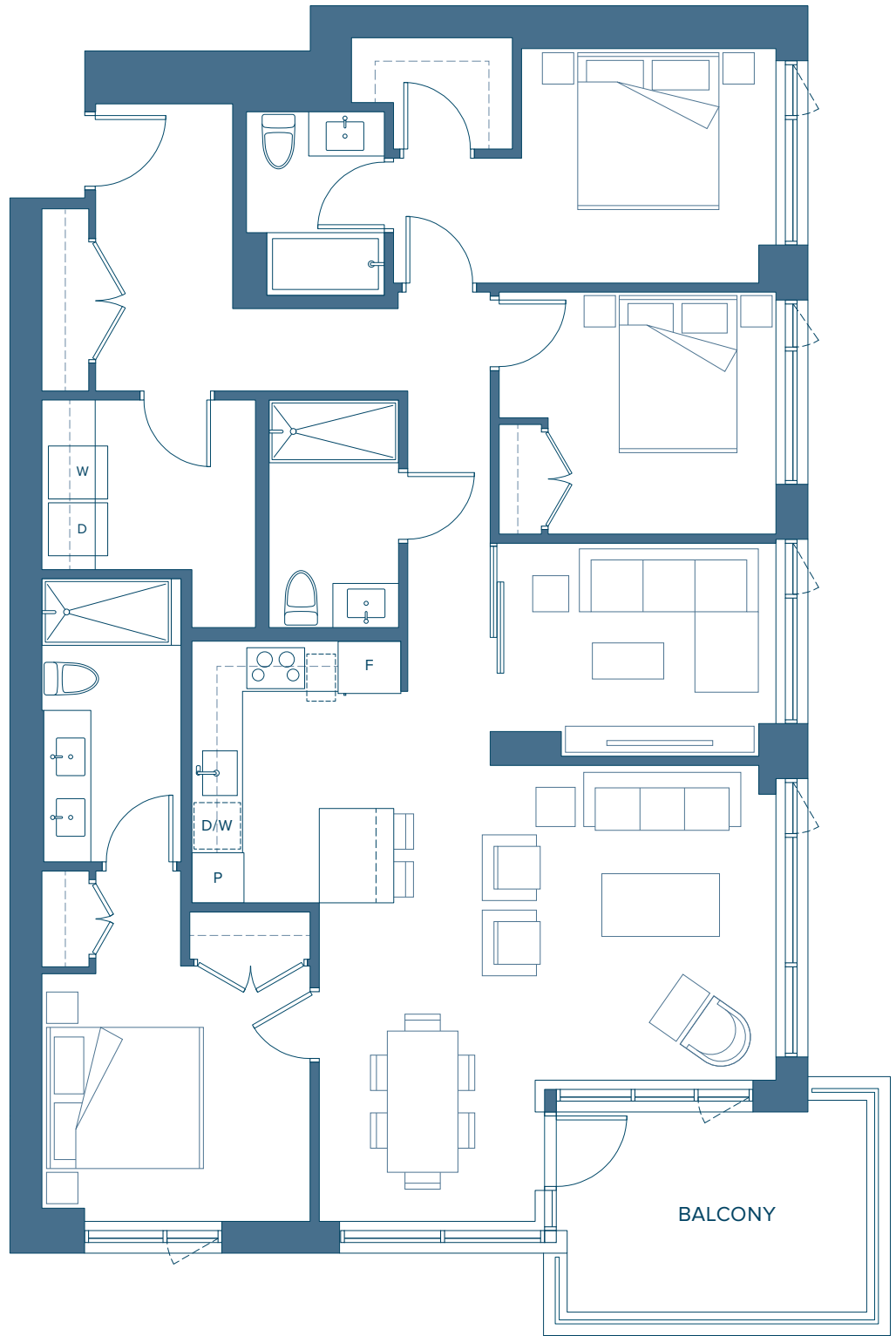
Plan G2

WATERFRONT COLLECTION

3 BEDROOM + FAMILY
INTERIOR 1,567 SQ. FT.
EXTERIOR 141 SQ. FT.

DRIFT

NORTH HARBOUR™



WATERFRONT
LEVEL 4

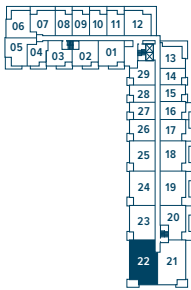
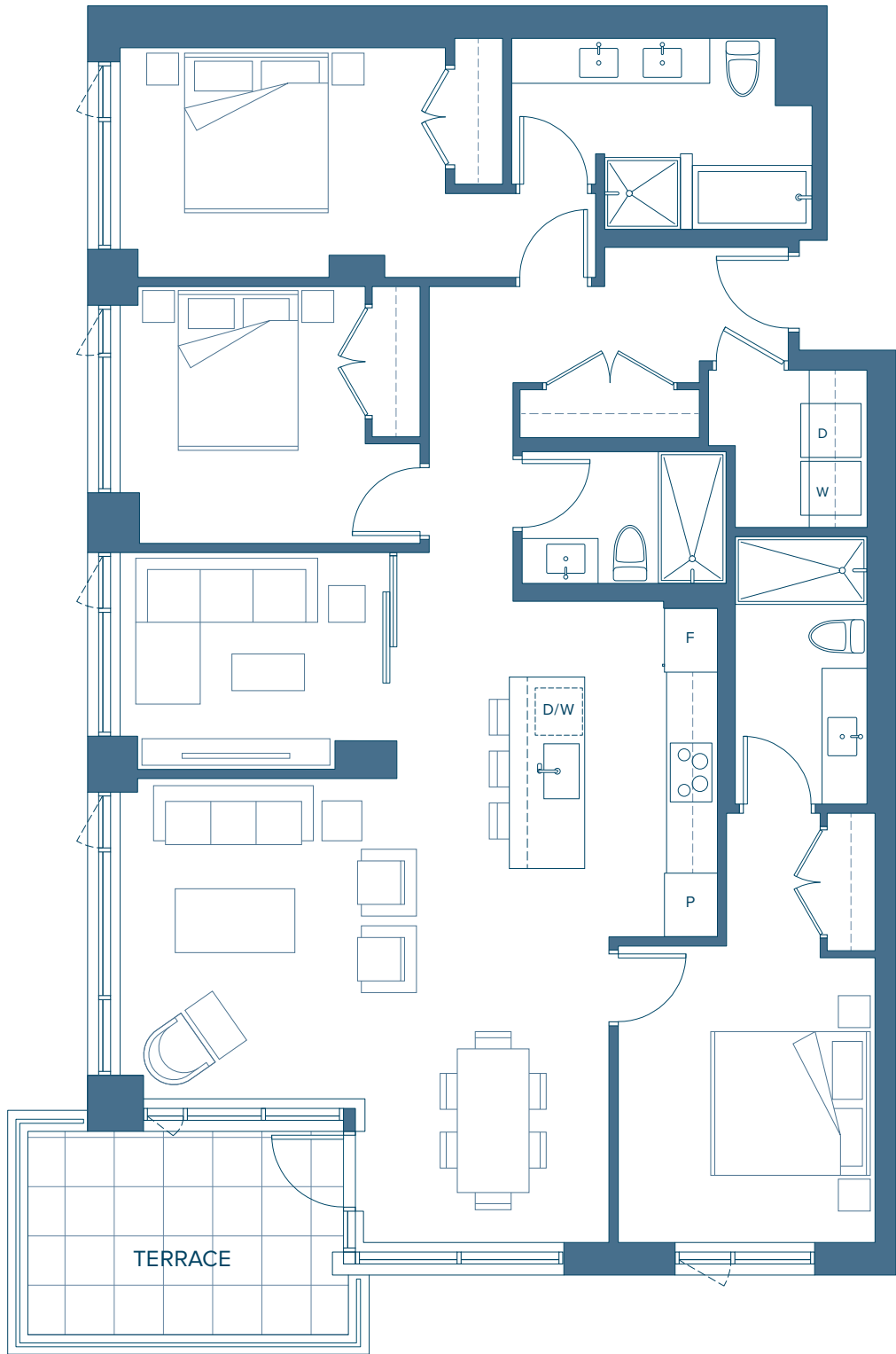
Plan G3

WATERFRONT COLLECTION

3 BEDROOM + FAMILY
INTERIOR 1,580 SQ. FT.
EXTERIOR 142 SQ. FT.

DRIFT

NORTH HARBOUR™



WATERFRONT
LEVEL 3

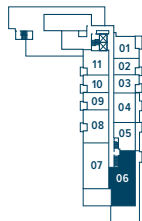
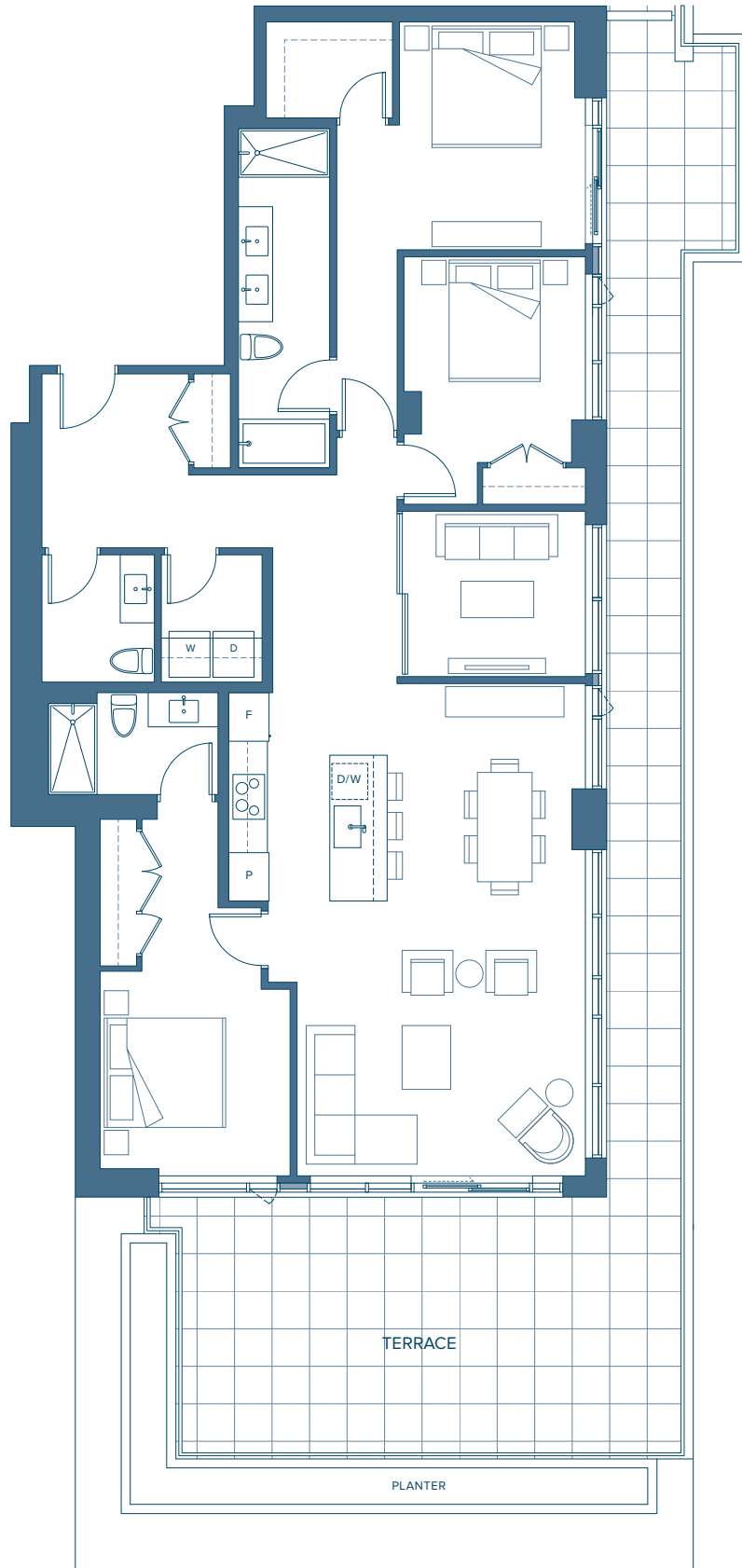
Plan G4

WATERFRONT COLLECTION

3 BEDROOM + FAMILY
INTERIOR 1,743 SQ. FT.
EXTERIOR 1,062 SQ. FT.

DRIFT

NORTH HARBOUR™



^
N WATERFRONT
LEVEL 8

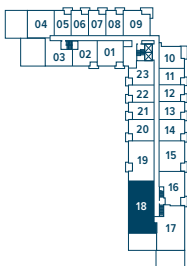
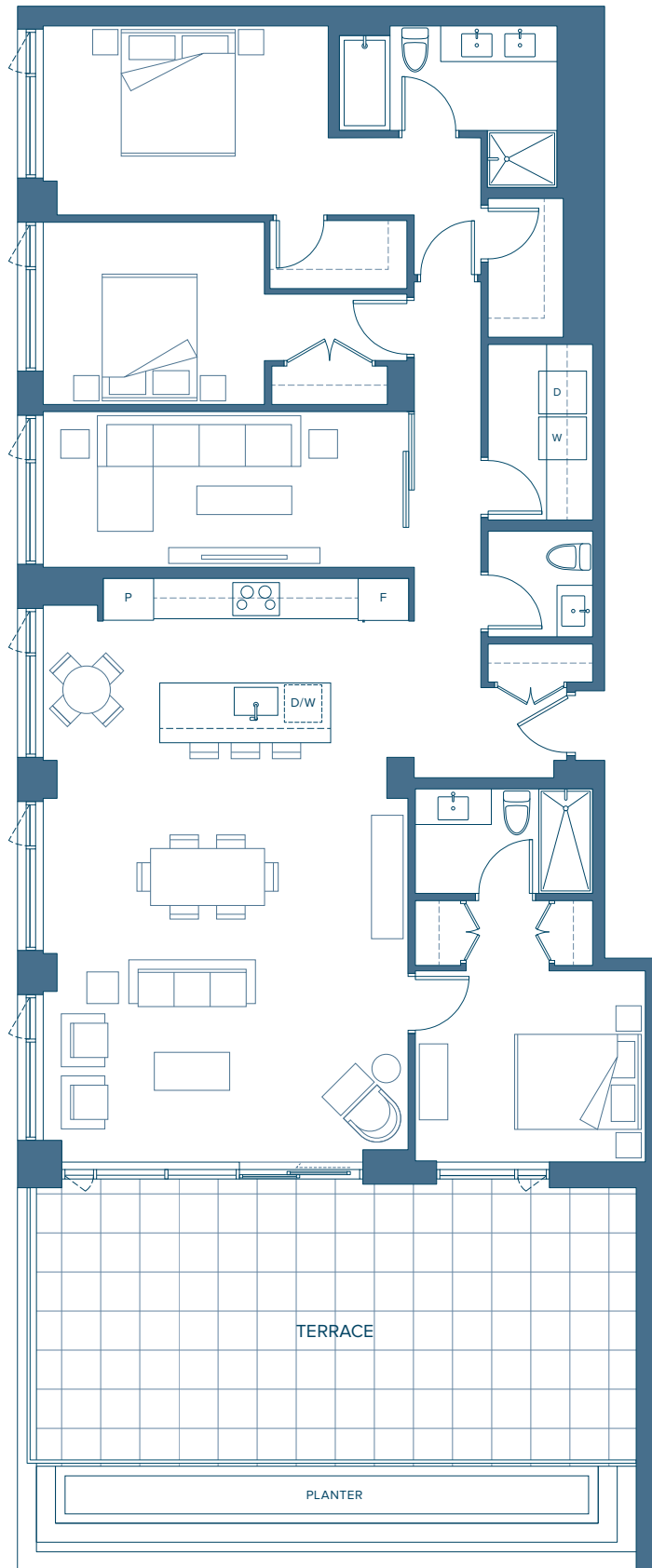
Plan G5

WATERFRONT COLLECTION

3 BEDROOM + FAMILY
INTERIOR 1,849 SQ. FT.
EXTERIOR 674 SQ. FT.

DRIFT

NORTH HARBOUR™



WATERFRONT
LEVEL 6

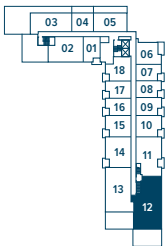
Plan G6

WATERFRONT COLLECTION

3 BEDROOM + FAMILY
INTERIOR 1,874 SQ. FT.
EXTERIOR 701 SQ. FT.

DRIFT

NORTH HARBOUR™



WATERFRONT
LEVEL 7

Plan G7

WATERFRONT COLLECTION

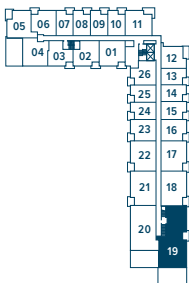
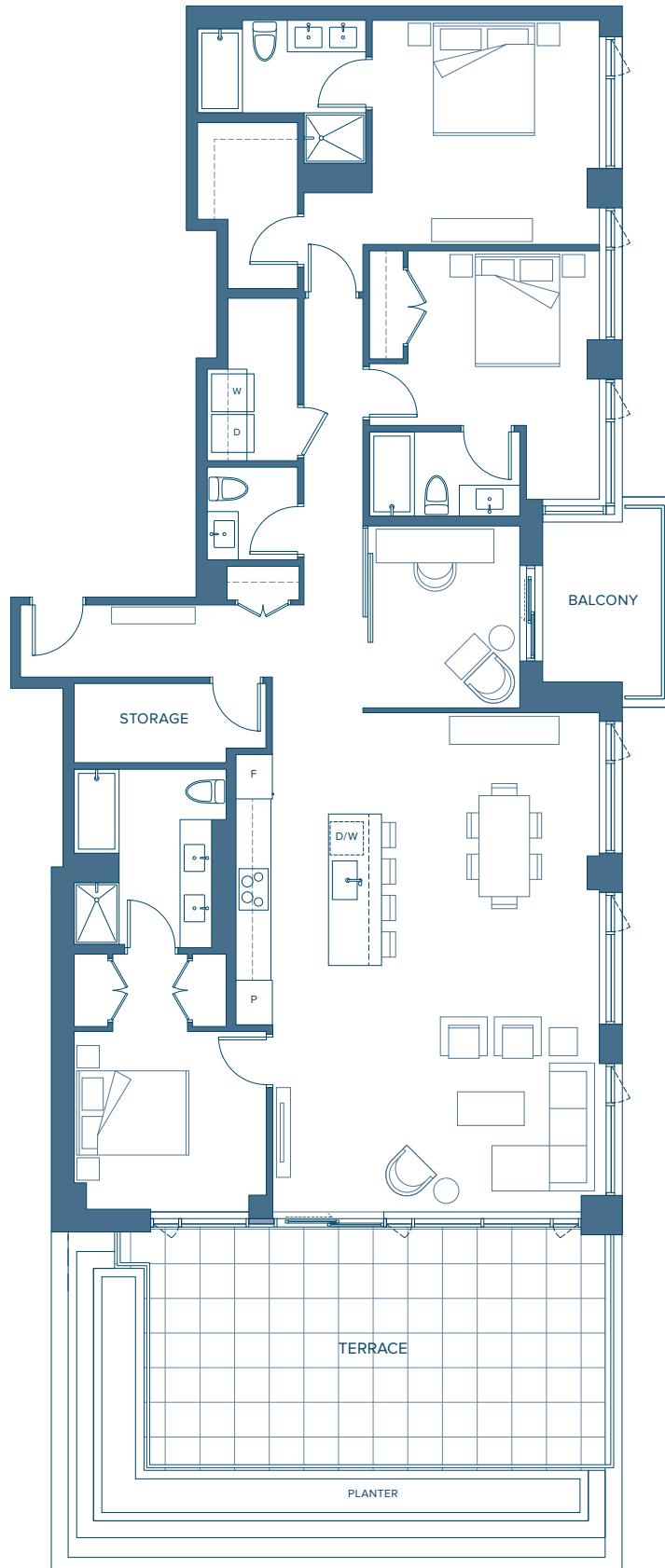
3 BEDROOM + FAMILY

INTERIOR 2,034 SQ. FT.

EXTERIOR 701, 84 SQ. FT.

DRIFT

NORTH HARBOUR™



WATERFRONT
LEVEL 5