

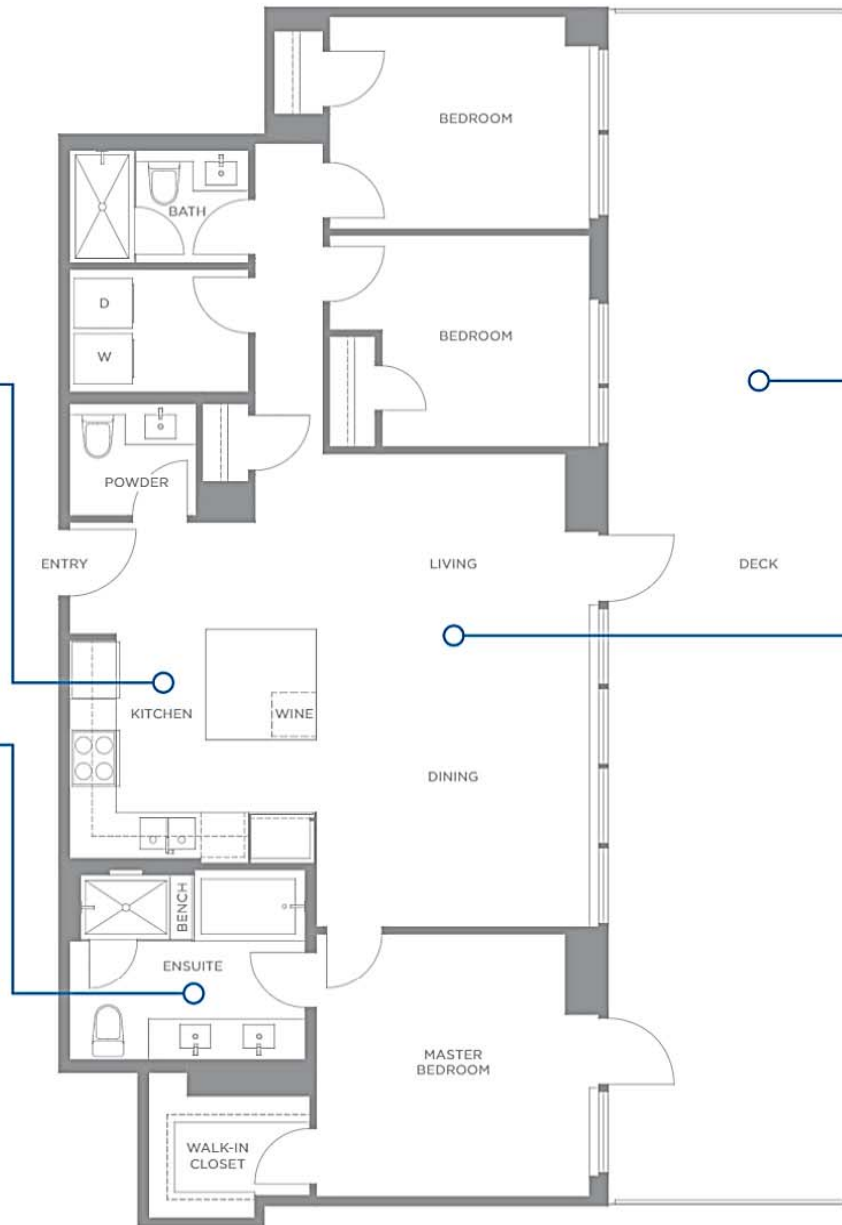
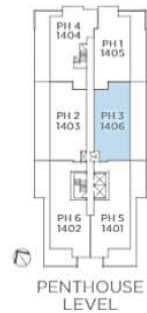
PENTHOUSE 3

3 BEDROOM, 2.5 BATHROOM
1,268 SQ.FT. (APPROX.)

Gourmet kitchen featuring a USB port on the kitchen island, integrated cutlery tray, and upgraded Miele appliance package:

- Stylish 36" refrigerator featuring a bottom-mounted freezer seamlessly integrated with custom cabinetry
- Wine fridge
- 30"-wide 5-burner gas cooktop and self-cleaning wall oven

Spa-inspired ensuite featuring a frameless shower, plenty of marble, medicine cabinets with top and bottom LED strip lighting, and Nuheat flooring.



Generous deck with rough-in for patio heating and plumbing for a gas barbeque.

9'4" ceilings and expansive windows create a light, open living space.

Two gated, enclosed parking stalls with a Level II EV charging receptacle.