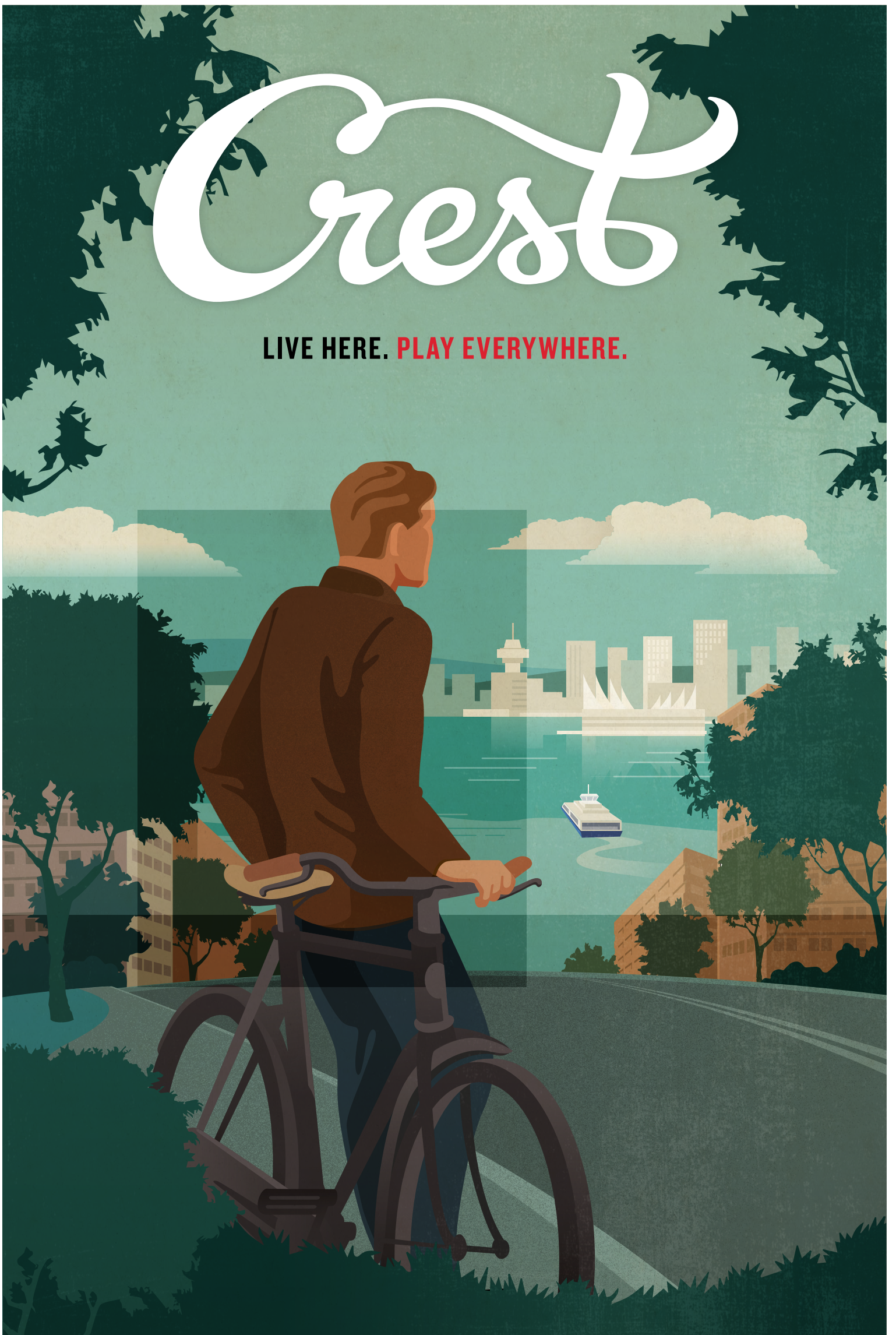


Crest

LIVE HERE. PLAY EVERYWHERE.





WHERE THE PAST AND PRESENT MEET IN PERFECT HARMONY

Like you, we see the world a little differently. For some, living in the city and looking at the mountains is what they want. For us, living on the mountain and looking at the city makes us feel at home. It may be a subtle difference, but at Crest, it defines our homeowners.





Seven35, North Vancouver



Prodigy, UBC



The Shore, North Vancouver



Sail, UBC



Remix, North Vancouver

45

45+ YEARS OF BUILDING TRUST

For almost 50 years, we've earned a reputation that's pretty darn awesome. As one of BC's leading multi-disciplinary real estate organizations, we've built more than 10,000 homes, and over 4 million square feet of commercial space. But what's even more important than that, is we've worked really hard to be leaders in sustainable and innovative building practices.

It all starts with a great foundation of core values – Innovation, Partnership, Sustainability, and Passion for the Customer. This is our basis for a thriving working community where our people are inspired to provide first class products and services. And hey, we like to have a little fun doing it too. That's what makes your experiences memorable and refreshingly pleasant.

As an Adera homebuyer, you can look forward to some pretty deep-rooted commitment to quality, integrity, and award-winning customer service. You also get "choice" through our i.D. By Me Home Customization Program to dramatically personalize your home, your own way.

Building your better future.



#101 – 1200 LONSDALE AVENUE, NORTH VANCOUVER, BC ADERA.COM/CREST 604 980 0016



Any marketing collateral including renderings, photos, models, or floorplans are solely for illustrative purposes only and may vary from as-built development. All areas are approximate, and scale of floorplans may vary between plans. Buyers are strongly encouraged to review the latest issued building plans before making a final choice. All sales by Disclosure Statement only. E&O.E.
Crest Adera Projects Ltd. Adera Realty Corp. 2200 -1055 Dunsmuir Street, Vancouver, BC V7X 1K8 | 604.684.8277



WEST COAST IN EVERY SENSE

FEATURES

- 161 hybrid mass timber and wood frame apartment homes with 18 concrete townhomes across two, 6-storey buildings
- Stunning West Coast modern architecture by award-winning Integra Architecture Inc. featuring dramatic rooflines and extensive use of natural materials
- Anchoring the building's architectural design is a signature fin, a stunning design element that will be a landmark on Lonsdale
- Cascading water feature with fountains and two additional water features at the entrance
- Overwhelming West Coast views of the North Shore mountains paired with equally stunning views of the Burrard Inlet and Vancouver Skyline from your private, expansive rooftop lanai - for those who love to soak up the West Coast beauty, Crest is the home for you

NEIGHBOURHOOD

- Prime location situated in the heart of central Lonsdale
- Front door lobby access from quiet cul-de-sac off 8th street, steps away from Lonsdale
- A 'Walker's Paradise' indicated by a 94 Walk Score with every urban convenience just minutes from your home: Whole Foods Market, Loblaws City Market, Club 16 Trevor Linden Fitness, Lagree West, Buddah-Full Cafe...just to name a few high profile neighbourhood hot spots!

AMENITIES

- Signature West Coast Club amenity includes a gourmet kitchen and lounge for all your entertainment requirements or for a quiet, inspirational place to read
- A luxury fitness room with modern, high-end equipment
- Ample shared outdoor space for long summer days to relax and unwind with friends
- Secure bike lockers for the avid street and/or mountain cyclist
- Storage lockers available for every home
- Newly revived adjacent green space perfect for playing with four legged friends or enjoying the tranquillity of the neighbourhood

INSPIRED INTERIORS

- Two modern colour schemes by the brilliant designers at Portico Design Group, featuring a sophisticated mix of crisp whites, greys and warm wood tones
- Wide-plank laminate flooring in entry, living room, dining room and kitchen
- Oversized windows letting natural light illuminate your home paired with 8ft 5in ceiling height
- Exposed wood ceilings on penthouse homes

for the ultimate West Coast touch

- High quality appliances with upgrade options to suit your lifestyle
- Adjustable horizontal blinds for just the right amount of privacy and shade
- In-floor radiant heating in bedrooms and living areas for ultimate luxury
- Hose bibs for all ground floor patios and roof deck homes
- Modern, two tone cabinetry blending warm wood grains and glossy laminate finishes
- Under-cabinet LED lighting for illuminating tasks or setting the ambiance
- Stylish pendant lights over breakfast bar
- Electrical rough-in for security systems

FOR GOURMET ENDEAVOURS

- An inspired pairing of Fisher & Paykel refrigerator with Kitchenaid stainless steel appliance package comes standard in Crest homes on levels 1 - 5 including:
 - Kitchenaid gas range with smart features, exclusive technology and ergonomic front controls
 - Stainless steel built-in Kitchenaid dishwasher
 - Sleek and efficient, slide out Broan hood-fan
 - Award Winning European designed Grohe faucet, with pull out spray with a sparkling polished chrome finish
 - Luxurious quartz slab kitchen countertops with large format tile backsplash
- Peak of luxury for all penthouse homes includes: Ultimate Kitchen package
- Crest Signature Appliance Upgrade: Jenn Air combo 5 burner gas cooktop with built in wall oven below, Jenn Air stainless steel dishwasher, Broan slide out hood-fan and Fisher & Paykel 30" stainless steel refrigerator
- Gas service to patios and balconies for a barbecue every night of the week!

CONVENIENT & SECURE LIVING

- Adera's award-winning Customer Care program for your first two years of residency
- Coded security access key fob system
- 2-5-10 New Home Warranty by Travelers Canada for your peace of mind

MINIMIZING YOUR FOOTPRINT AND OURS

- Energy efficient building design to meet Step 3 of the latest building code
- Mass timber floor system using Cross Laminated Timber (CLT), a carbon

sequestering material that uses wood exclusively from sustainably managed forests

- CLT - new, ecological mass timber construction for buildings of the twenty-first century
- LED lighting in the common areas
- Low flow plumbing fixtures help you save water and the energy needed to heat it with no compromise to your experience
- Low VOC paints - breathe healthy air!

I.D. BY ME

i.D. By Me gives you the freedom to be creative - to make four walls and a roof so much more personal. It allows you the opportunity to be your own interior designer and ensure that your unique iDentity is reflected in your new Adera home

A-la-carte options to choose from i.D. By Me:

- Waterfall gables on kitchen islands
- Air conditioning
- Swap out your tub for a shower complete with pivoting glass door and Grohe handheld shower system in two bath homes
- Window screens & roller shades
- Upgrade closet organizers to white melamine complete with shelves and drawers
- Custom Adera millwork - perfectly sized for condo living. Including: wall units for TV & fireplace, dining buffets, & more.

LIVE WEST COAST OPTIONS

- Four person hot tubs with built-in lighting and stereo
- Two styles of self-watering gardens perfect for balconies, patios or roof decks

INNOVATION BY ADERA

Cross Laminated Mass Timber - setting a new industry standard for wood construction, Crest will be built using Cross Laminated Timber (CrossLam® CLT), a 'multi-layer mass timber product that matches the strength and durability of concrete and steel at a fraction of the weight.'*

Quiet Home™ - Adera's innovative construction floor and wall assembly system that significantly reduces sound transmission between homes.

Acoustical test results states Quiet Home™ performs equal to, or better than homes built to 2015 BC Building Code Standards

Ask us for more information on our trademarked, proprietary system to make your home your sanctuary

EV charging stalls

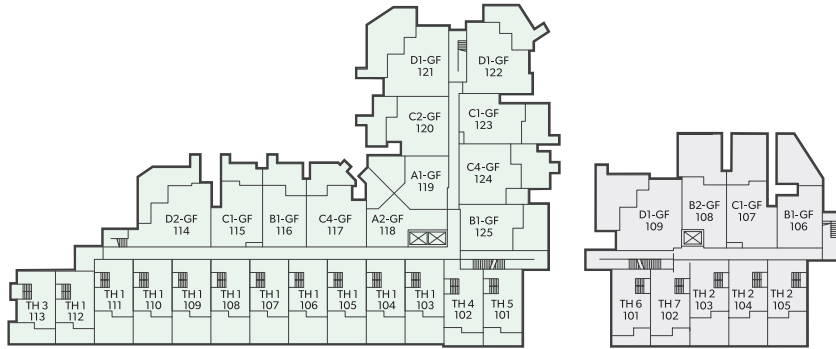
In partnership with Telus homeowners will have 1 year of home services for \$0 (Internet, Optik TV, Home Phone) and fibre optic technology

*<http://www.structurlam.com/>

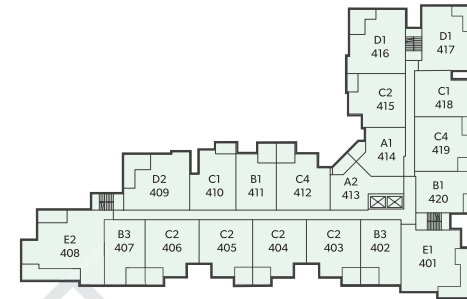


Crest

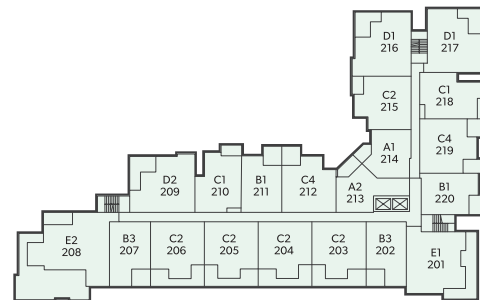
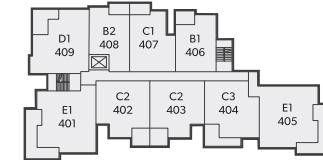
LIVE HERE. PLAY EVERYWHERE.



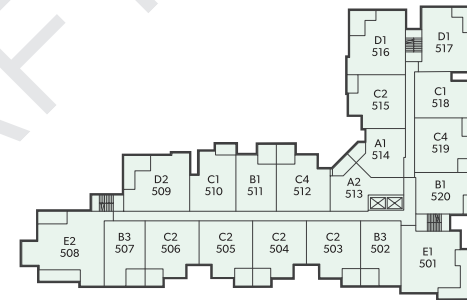
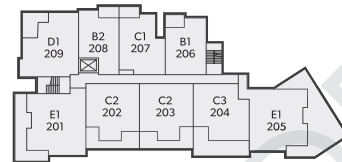
1ST FLOOR



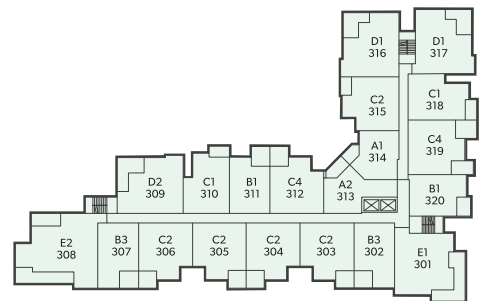
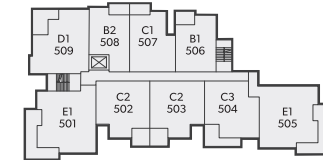
4TH FLOOR



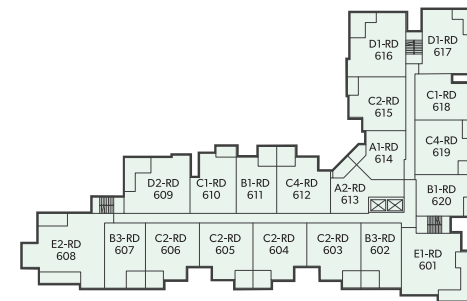
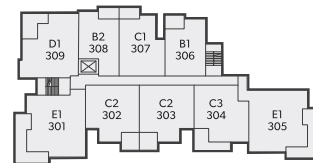
2ND FLOOR



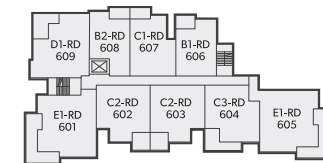
5TH FLOOR



3RD FLOOR



6TH FLOOR



DRAFT

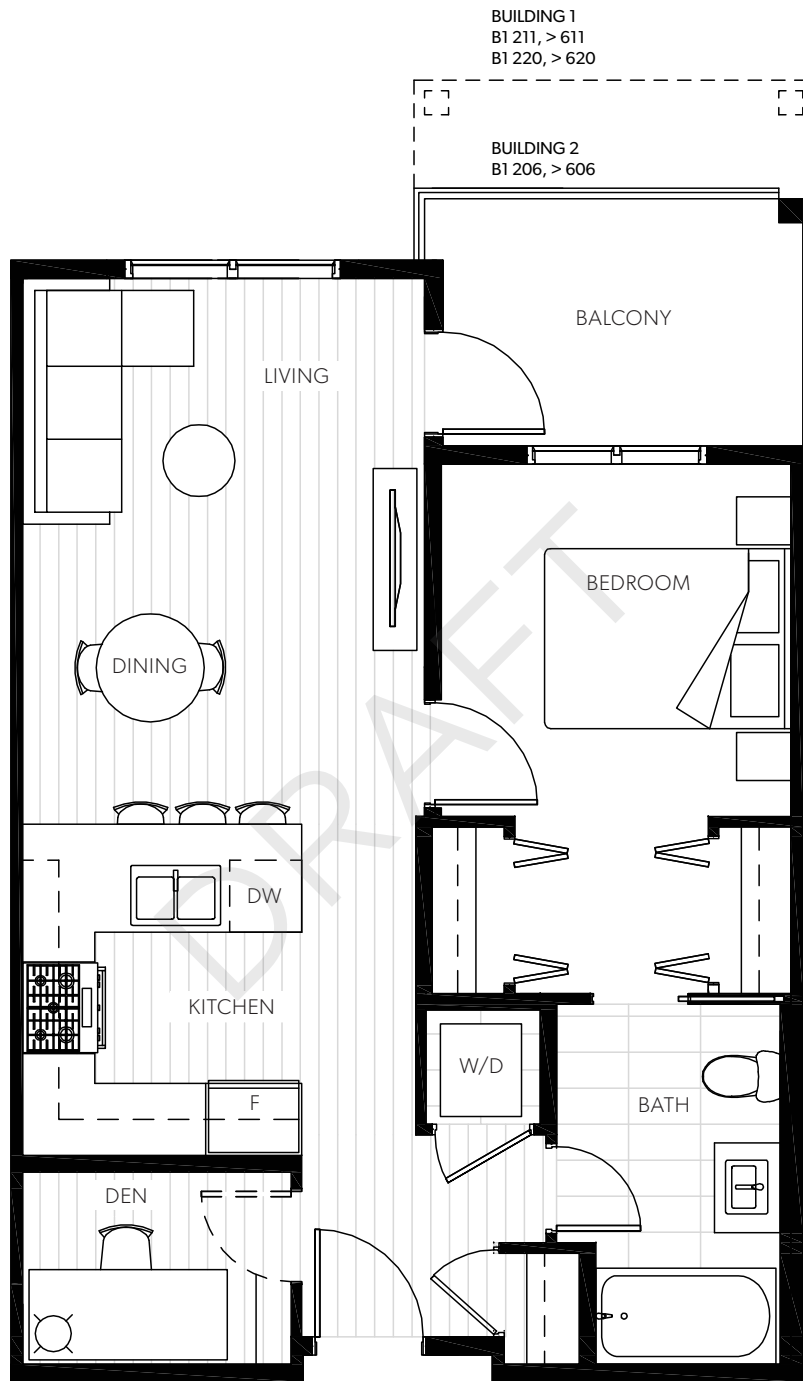


B1

BIRCH

1 BEDROOM + DEN (ADAPTABLE), 1 BATH

614 – 624 SQ FT



BUILDING 1
B1 211, > 611
B1 220, > 620

BUILDING 2
B1 206, > 606

OPTIONAL DOOR ON DEN

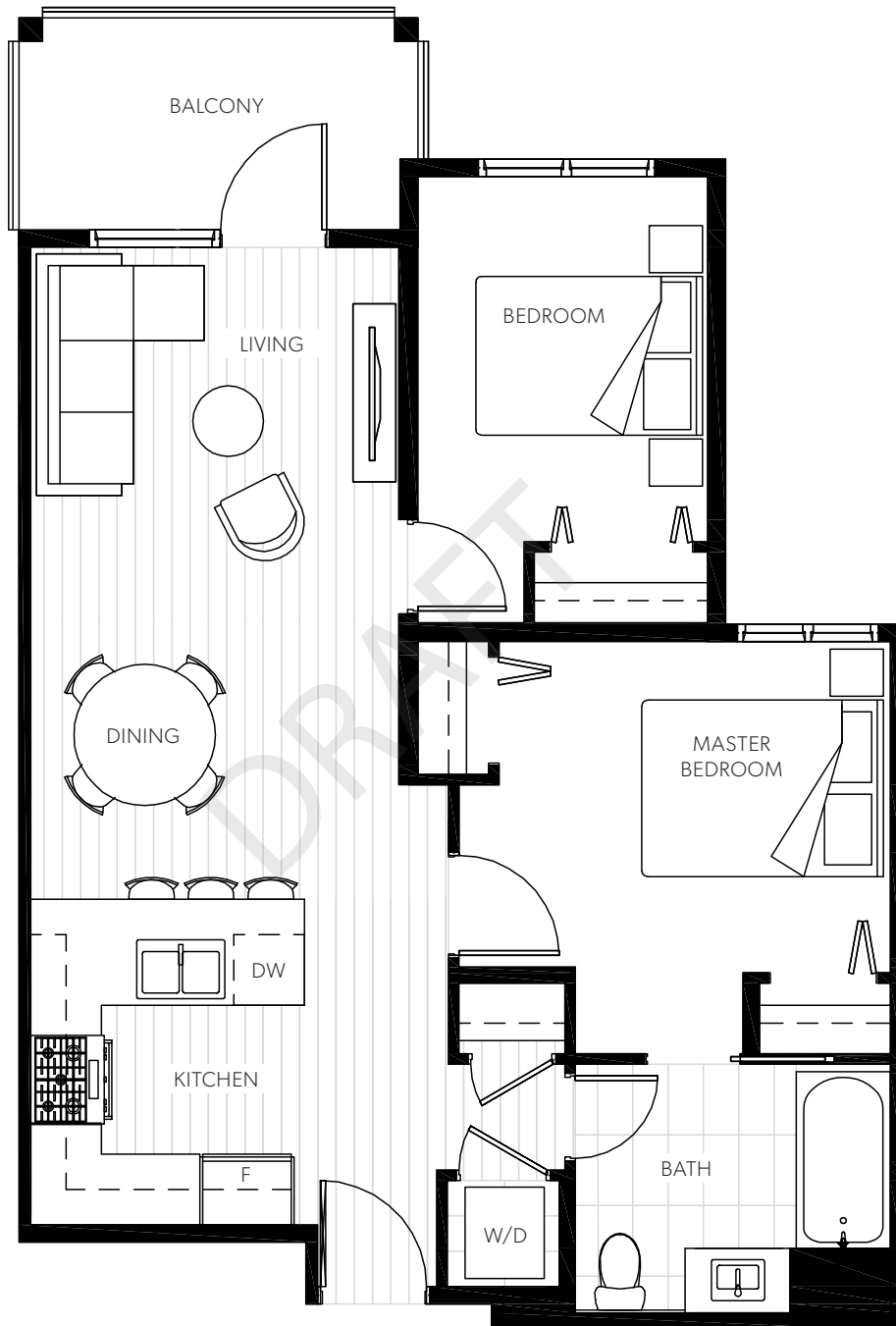


CI

CEDAR

2 BEDROOM (ADAPTABLE), 1 BATH

699 SQ FT



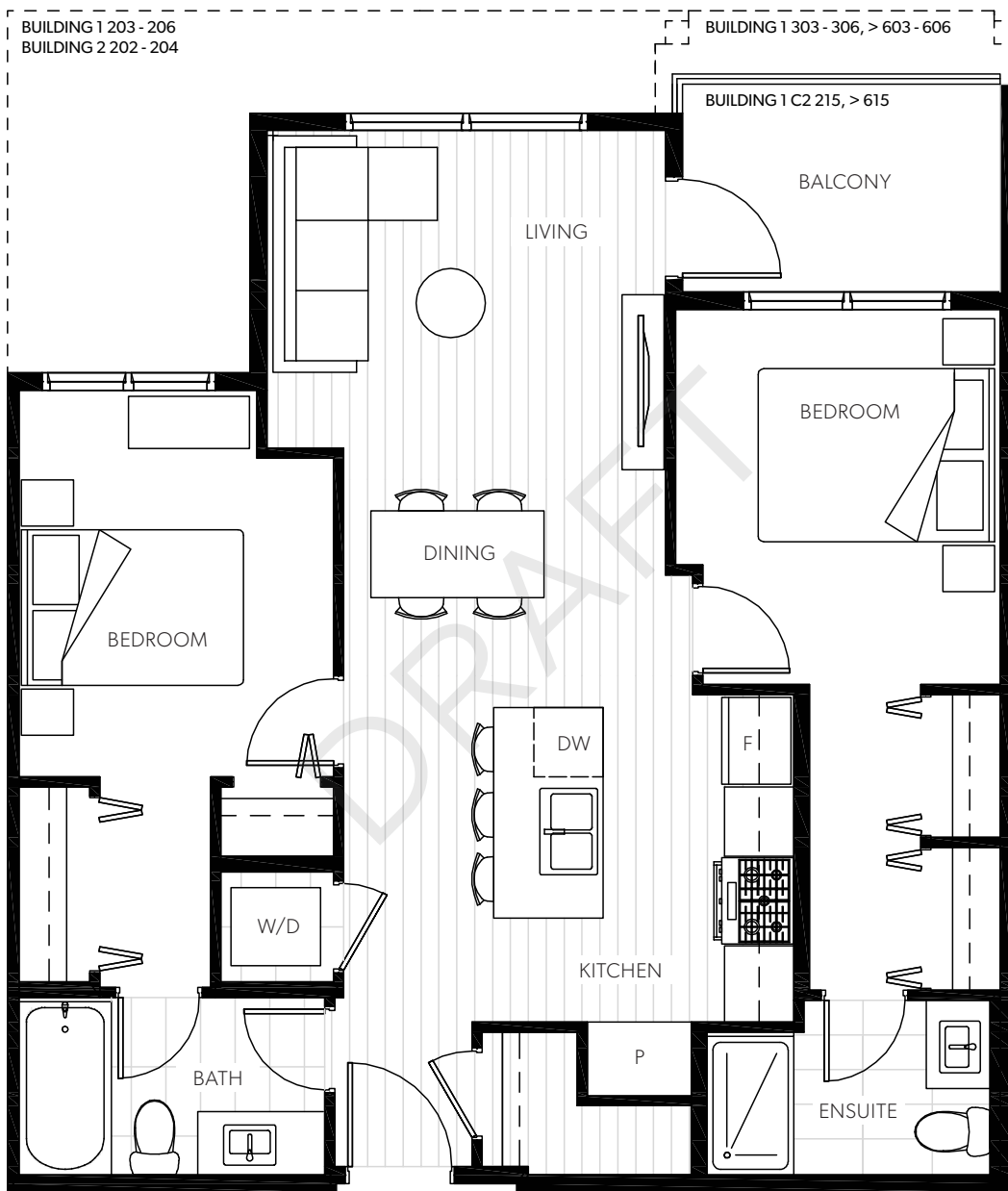


C2

CEDAR

2 BEDROOM, 2 BATH

786 SQ FT



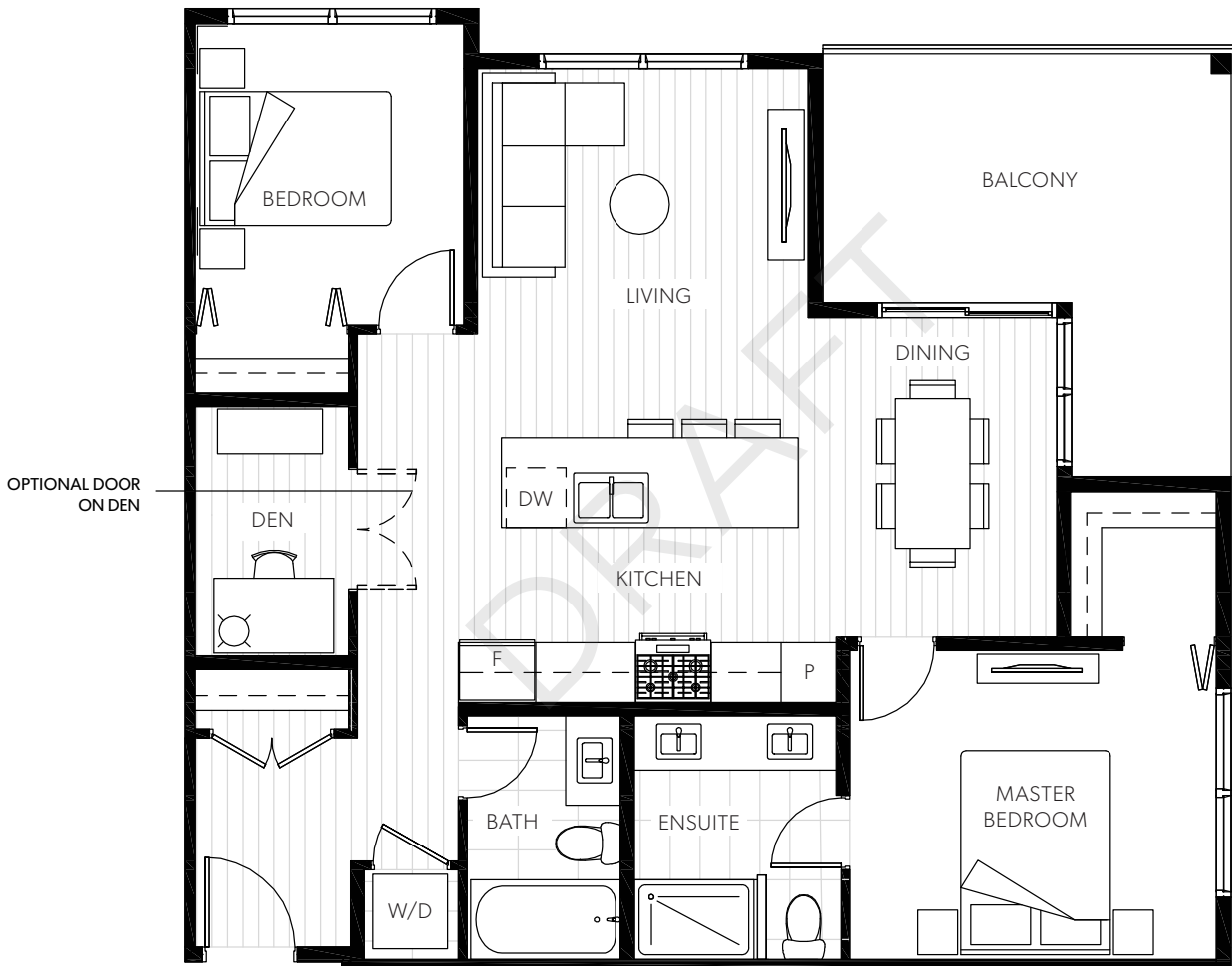


D1

DOGWOOD

2 BEDROOM + DEN, 2 BATH

926 – 936 SQ FT



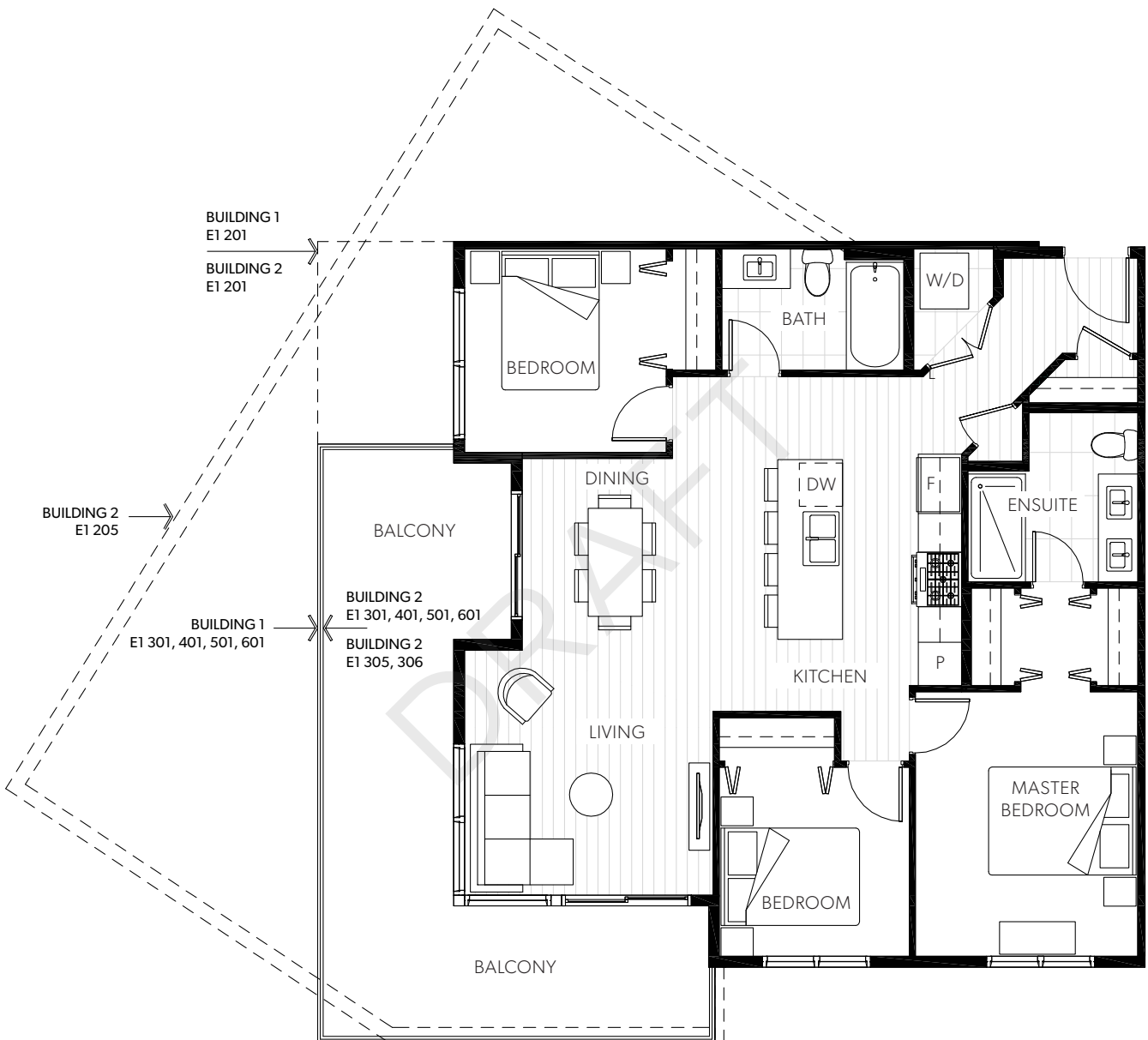


E1

ELM

3 BEDROOM, 2 BATH

1,023 – 1,087 SQ FT





TH1

TAMARACK

2 BEDROOM, 2 BATH
1,001 SQ FT

